

# U.S. Flock Trends and Projections

JUNE 10, 2015



*Compiled by*  
**Maro Ibarburu**

*Sponsored in part by:*



American Egg Board

*The Egg Industry Center Market Reports & Industry Analysis are compiled in the memory of their creator, Don D. Bell, Poultry Extension Specialist Emeritus - UC Davis.*

## U.S. EGG INDUSTRY STATISTICAL REPORT SUMMARY

\* The April hatch (straight-run chicks) was 8.6% higher than in 2014. This projects forward to a 21.4 million pullet placement for September of 2015 (after adjusting for a 1 million loss to avian influenza in pullet houses) which is 0.8 million larger than September of 2014 placement (20.6).

\* Current (April average, 2015) U.S. table egg layer number (300.0 million) is 1.4 million smaller than last year's number at this time (304.3 million), and down 4.1 million compared to last month (304.1 million).

\* In April, Iowa led the nation with 54.9 million laying hens compared to 30.8 million in Ohio, 25.2 million in Indiana, and 23.6 million in Pennsylvania. California (with 12.7 million layers) lost it's 5th position to Texas with 14.8 million layers.

\* The April U.S. rate of lay was estimated to be 79.0% which is 0.6% higher than the April 2014 level (78.4%). The total number of table eggs produced in April 2015 was 0.6% lower than the April 2014 production.

\* The nation's average flock contained 21.7% hens older than 72 weeks of age, which is 2.7% lower than the April 2014 average (24.4%). This is an indication that the U.S. flock is getting younger (see figure 14).

\* Shell eggs broken for products in April 2015 totaled 6.061 million cases, 2.3% less than in April 2014 (6.205 million cases).

### Monthly Highlights (Compared to April a year ago) (% change) - U.S.

	2014	2015	% Change
Hatch - Egg-Type Straight Run (thousands) (U.S.)	45,703	49,644	8.6
Table Egg Layers (millions) (U.S.)	304.3	300.0	-1.4
Rate of lay (percent)	78.4	79.0	0.6
Molting (May 1, 2015) (percent in + out of a molt)	20.5	20.7	0.2

### Year-end layers (millions) - U.S.

Year	2005	2006	2007	2008	2009	2010	2011	2012	2013	2014	2015
Million	290.9	290.6	284.7	285.6	285.2	286.8	290.1	294.6	300.4	304.8	

\* estimated value

**The avian influenza outbreak has resulted in the loss of many layers and pullets. Most of the larger laying operation outbreaks started close to the end of April. Therefore, most of the results in the statistics are going to be seen starting with the May 2015 statistics. As a result, this information will not be available until the June version of the USDA Chickens and Eggs report.**

NOTE: Data for the previous month may be changed by the USDA to reflect updates following late submissions by responders.



**TABLE OF CONTENTS**

<b>Table Name</b>	<b>Table #</b>	<b>Page</b>	<b>Sheet or Section</b>
Egg Type: U.S. Eggs In Incubators and Straight Run Hatch	1	3	U.S. Volume
Average U.S. Layers and Table Egg Layers	2	3	U.S. Volume
U.S. All Eggs, Table Eggs and Rate of Lay	3	4	U.S. Volume
Shell Eggs Broken Under Federal Inspection	4	5	U.S. Volume
Per Capita Egg Consumption by Quarter	5	5	U.S. Volume
Induced Molt Percent - U.S. Totals (1st of Month)	6	6	U.S. Volume
Slaughter of Light Fowl	7	6	U.S. Volume
Export of Table Eggs In the Shell In 2015	8	7	Trade
Export of Egg Products In 2015	9	7	Trade
Total Eggs Exported - 2015	10	7	Trade
All Eggs Produced, Including Hatching Eggs, by Region - 2015	11	9	Regional
All Layers by Region, Including Breeders - 2015	12	10	Regional
Table Egg Layers In Flocks 30,000 and Above by Region - 2015	13	10	Regional
Total Molt by Region (Simple Average of Reporting States, %) - 2015	14	10	Regional
Table Egg Layers In Flocks 30,000 and Above In Leading States (Average) - 201	15	11	Regional
Projected U.S. Egg-Type Hatchery Supply Flock - 2015	16	12	Projections
U.S. Pullets to be Housed Based Upon Hatch 5 Month Ago	17	12	Projections
Projected U.S. Table Egg Flock Less Than 72 Weeks of Age	18	13	Projections
First of the Month Projection Estimates of U.S. Table Egg Layers (millions)	19	14	Projections
Projected vs. Actual First of the Month (U.S. Flock Size) - 2015	20	14	Projections
2015 Bird Flow by Month	21	15	Projected Flock
2015 United States Flock Size Projections	22	16	Previous Projections
Summary to Date	23	19	Final

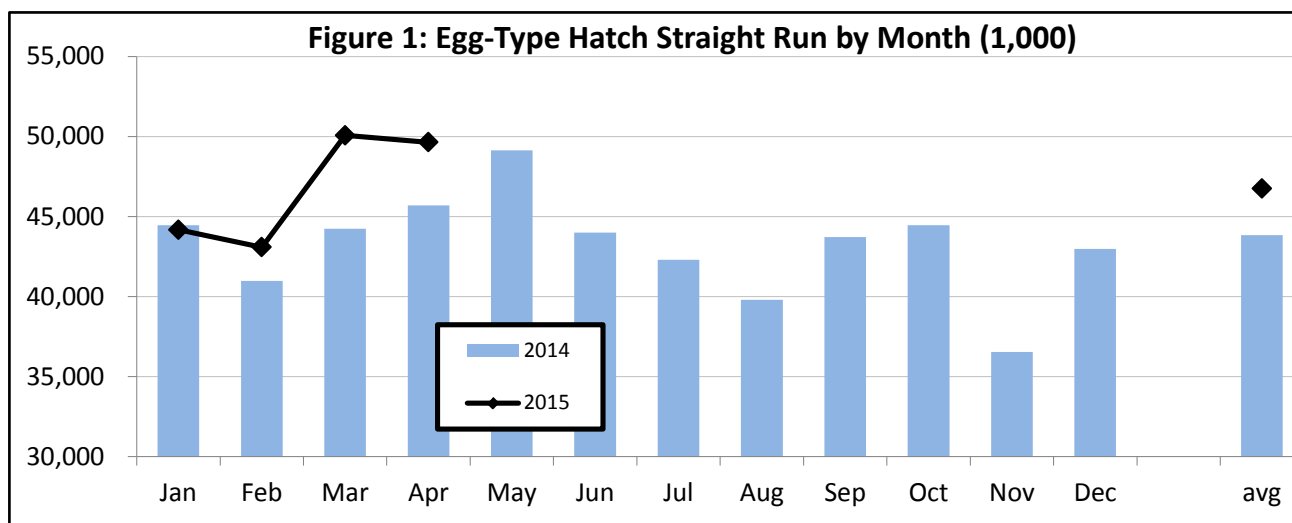
<b>Figure Name</b>	<b>Figure #</b>	<b>Page</b>	<b>Sheet or Section</b>
	1	3	U.S. Volume
Table Egg Layers by Month (Millions)	2	4	U.S. Volume
Rate of Lay (Percent)	3	4	U.S. Volume
Shell Eggs Broken for Further Processing by Month (Million cases)	4	5	U.S. Volume
Shell Eggs Broken by Month (Percent of Total Table Eggs)	5	5	U.S. Volume
Monthly Percent Molted	6	6	U.S. Volume
Slaughter of Light Fowl by Month (Millions)	7	6	U.S. Volume
U.S. Egg Exports by Month - 2014 and 2015	8	8	Trade
U.S. Exported Eggs by Month - 2014 and 2015	9	8	Trade
Leading States' Table Egg Layers In Flocks of 30,000 and Above (1988-2014)	10	11	Regional
Percent of U.S. Flock More Than 72 Weeks of Age by Month	11	13	Projections
U.S. Monthly Table-Egg Layers (2002-2015)	12	17	Trends
U.S. Table Eggs per Hen per Day by Month (2002-2015)	13	17	Trends
Monthly Percent of U.S. Flock Molted (2002-2015)	14	17	Trends
U.S. Per Capita Egg Consumption by Year (1913-2015)	15	18	Trends



**EGG TYPE: EGGS IN INCUBATORS (on the 1st of the month) and STRAIGHT RUN HATCH (U.S.)** TABLE 1

EGG-TYPE Eggs in Incubators (thousands)				EGG-TYPE Straight Run Hatch (thousands)			
month	2014	2015	Change (%)	month	2014	2015	Change %
Jan	37,999	42,062	10.7	Jan	44,458	44,174	-0.6
Feb	39,746	40,327	1.5	Feb	40,986	43,091	5.1
Mar	38,481	44,458	15.5	Mar	44,233	50,077	13.2
Apr	43,672	48,973	12.1	Apr	45,703	49,644	8.6
May	46,087	48,015	4.2	May	49,146		
Jun	42,465			Jun	44,006		
Jul	40,316			Jul	42,297		
Aug	38,507			Aug	39,803		
Sep	40,746			Sep	43,722		
Oct	42,824			Oct	44,468		
Nov	37,996			Nov	36,544		
Dec	41,967			Dec	42,980		
<b>5 Month Avg.</b>	41,197	44,767	8.8	<b>4 Month Avg.</b>	43,845	46,747	6.6
<b>5 Month Total</b>	205,985	223,835		<b>4 Month Total</b>	175,380	186,986	
<b>12 Month Total</b>	490,806			<b>12 Month Total</b>	518,346		

Source: USDA NASS Chickens and Eggs



**AVERAGE U.S. LAYERS AND TABLE EGG LAYERS 2014/2015 (MILLIONS)** TABLE 2

month	All Layers			Table Egg Layers			
	2014	2015	Change (%)	2013	2014	2015	Change (%)
Jan	359.6	363.7	1.2	298.7	303.4	306.5	1.0
Feb	359.0	362.3	0.9	299.7	302.7	304.7	0.7
Mar	360.0	362.5	0.7	300.4	303.7	304.1	0.1
Apr	360.8	358.5	-0.7	298.1	304.3	300.0	-1.4
May	360.4			296.6	303.6		
Jun	359.7			296.9	303.0		
Jul	360.8			297.4	304.2		
Aug	361.7			299.4	305.4		
Sep	361.8			300.1	306.0		
Oct	362.0			301.1	306.3		
Nov	364.0			304.5	308.1		
Dec	365.7			305.2	309.1		
<b>4 Month Avg.</b>	359.8	361.8	0.5	299.2	303.5	303.8	0.1
<b>Annual Avg.</b>	361.3			299.8	305.0		

Source: USDA NASS Chickens and Eggs

Table egg layers as a % of all layers to date (2015): 84%



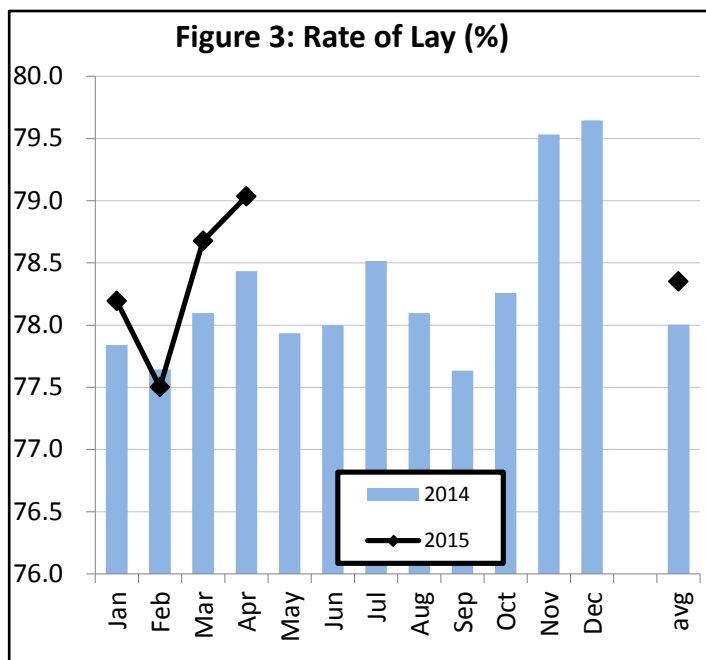
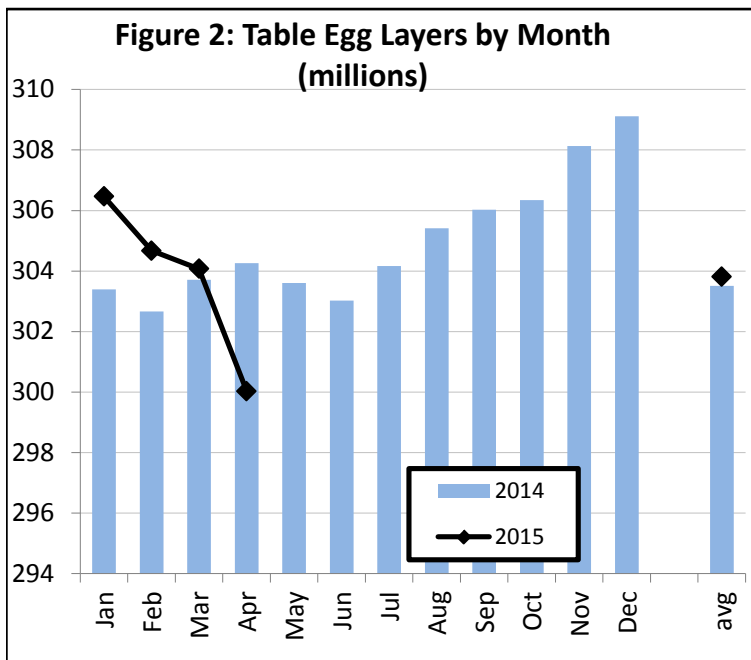
U.S. ALL EGGS, TABLE EGGS AND RATE OF LAY (ALL STATES)

TABLE 3

month	All Eggs (millions)			Table Eggs - human consumption (millions)			Rate of Lay (Table)	
	2014	2015	Change (%)	2014	2015	Change (%)	2014	2015
Jan	8,397	8,540	1.7	7,321	7,428	1.5	77.8	78.2
Feb	7,551	7,620	0.9	6,579	6,615	0.5	77.6	77.5
Mar	8,430	8,548	1.4	7,354	7,429	1.0	78.1	78.7
Apr	8,205	8,212	0.1	7,160	7,114	-0.6	78.4	79.0
May	8,428			7,336			77.9	
Jun	8,151			7,091			78.0	
Jul	8,503			7,404			78.5	
Aug	8,491			7,394			78.1	
Sep	8,186			7,126			77.6	
Oct	8,526			7,433			78.3	
Nov	8,411			7,353			79.5	
Dec	8,731			7,633			79.6	
<b>4 Month Avg.</b>	8,146	8,230	1.0	7,104	7,147	0.6	78.0	78.4
<b>Annual Avg.</b>	8,334			7,265			78.3	
<b>Total</b>	100,010	32,920		87,184	28,586			

Source: USDA NASS Chickens and Eggs

Total shell eggs through:	Year 2014		Year 2015		% Change
	April	million	28,586	0.6	
<b>Year 2014/15 - Table Eggs</b>	<b>Proj. 2015 (monthly avg. x 12)</b>				
<b>Ann. total (eggs)</b>	87.2	billion	87.7		
<b>(doz)</b>	7.3	billion	7.3		
<b>(cases)</b>	242.2	million	243.6		



**SHELL EGGS BROKEN UNDER FEDERAL INSPECTION (MILLION CASES)**

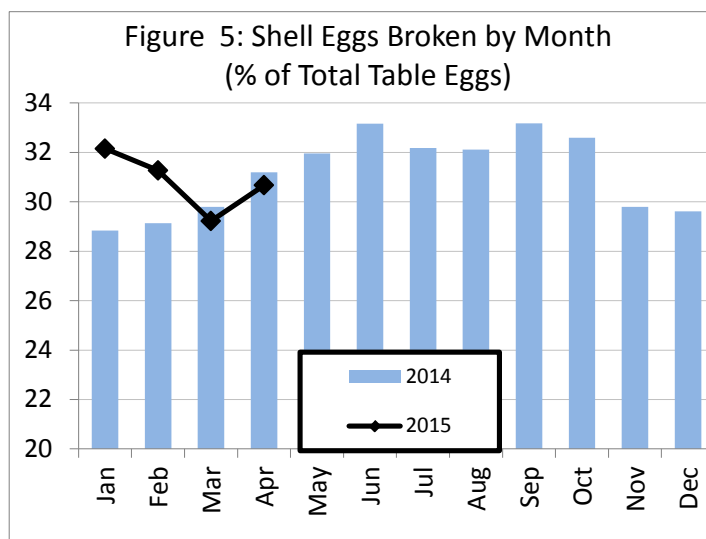
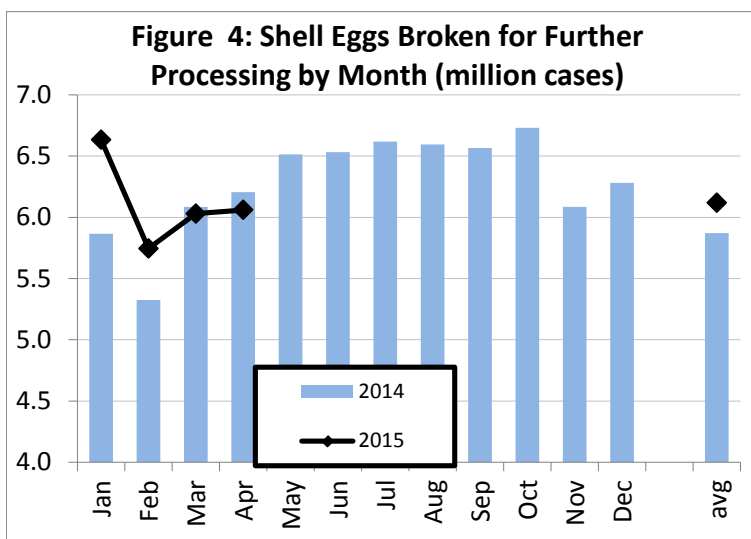
**TABLE 4**

month	2009	2010	2011	2012	2013	2014	2015	15/14 (%) Change
Jan	5.732	5.268	5.668	5.666	5.765	5.865	6.634	13.1
Feb	5.058	5.013	5.163	5.524	5.374	5.325	5.746	7.9
Mar	5.423	5.504	6.008	5.715	5.831	6.086	6.030	-0.9
Apr	5.900	5.714	5.464	5.634	5.950	6.205	6.061	-2.3
May	5.933	5.727	5.838	6.057	5.820	6.514		
Jun	5.612	6.206	6.167	5.955	6.118	6.532		
Jul	6.098	5.977	5.988	5.748	6.266	6.618		
Aug	5.681	5.884	6.061	6.523	6.200	6.596		
Sep	5.974	6.582	5.869	6.005	6.040	6.566		
Oct	6.105	5.842	5.805	6.109	6.289	6.731		
Nov	5.320	5.445	5.786	5.577	5.738	6.086		
Dec	5.424	5.891	5.615	5.964	5.745	6.281		
<b>4 Month Avg.</b>	<b>5.528</b>	<b>5.375</b>	<b>5.576</b>	<b>5.635</b>	<b>5.730</b>	<b>5.871</b>	<b>6.118</b>	<b>4.4</b>
<b>4 Month Total</b>	<b>22.113</b>	<b>21.499</b>	<b>22.303</b>	<b>22.538</b>	<b>22.920</b>	<b>23.482</b>	<b>24.471</b>	
<b>12 Month Total</b>	<b>68.260</b>	<b>69.054</b>	<b>69.431</b>	<b>70.477</b>	<b>71.136</b>	<b>75.405</b>		

Source: USDA NASS Egg products - monthly

**Million Cases Produced  
% BROKEN**

2009	219.144	221.728	228.286	235.956	242.178	79.406
%	31.5	31.3	30.9	30.1	31.1	30.8



**PER CAPITA EGG CONSUMPTION BY QUARTER**

**TABLE 5**

QUARTER	2008	2009	2010	2011	2012	2013	2014	2015*
1	61.8	62.0	61.8	61.3	63.3	64.4	64.7	64.4
2	61.3	61.5	61.9	61.5	62.3	63.5	65.4	63.4
3	62.0	61.4	62.5	62.8	63.3	64.8	66.3	65.3
4	63.8	62.9	63.1	64.3	65.6	66.1	66.8	67.2
<b>Total</b>	<b>248.9</b>	<b>247.7</b>	<b>249.3</b>	<b>250.0</b>	<b>254.5</b>	<b>258.7</b>	<b>263.3</b>	<b>260.3</b>

**Change from previous year  
(eggs)**

2009	-1.2	1.6	0.7	4.5	4.2	4.6	-3.0
------	------	-----	-----	-----	-----	-----	------

Source: USDA ERS Livestock and Meat Trade Data.

\* Estimates for 2015 (5/2015)



INDUCED MOLT PERCENT - U.S. TOTALS (1ST OF MONTH)

TABLE 6

month	In a Molt			Completed a Molt		Total		
	2014	2015	Change	2014	2015	2014	2015	Change
Jan	2.7	2.1	-0.6	18.2	18.1	20.9	20.2	-0.7
Feb	2.8	3.3	0.5	18.0	17.9	20.8	21.2	0.4
Mar	2.4	1.9	-0.5	18.0	18.9	20.4	20.8	0.4
Apr	1.9	2.0	0.1	17.9	18.0	19.8	20.0	0.2
May	2.8	3.0	0.2	17.7	17.7	20.5	20.7	0.2
Jun	3.0			17.2		20.2		
Jul	2.6			18.0		20.6		
Aug	3.3			18.0		21.3		
Sep	2.9			18.9		21.8		
Oct	3.3			19.3		22.6		
Nov	2.0			19.9		21.9		
Dec	1.3			19.3		20.6		
<b>5 Month Avg.</b>	2.5	2.5	-0.1	18.0	18.1	20.5	20.6	0.1
<b>12 Month Avg.</b>	2.6			18.4		21.0		

Source: USDA NASS Chickens and Eggs

Figure 6: Monthly Percent Molted

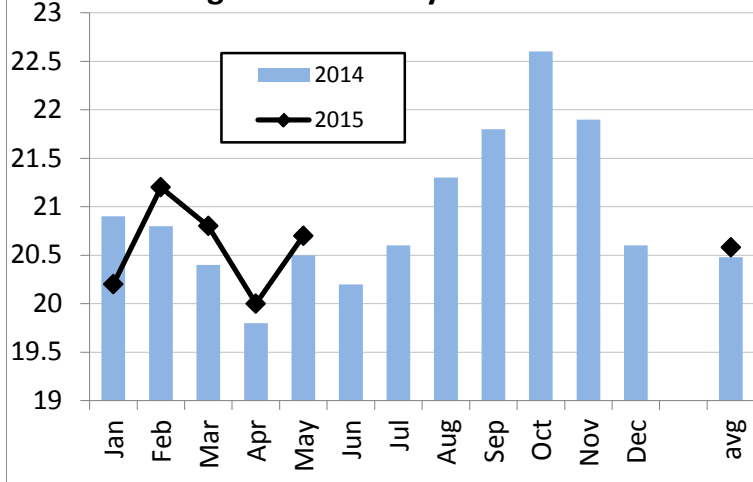
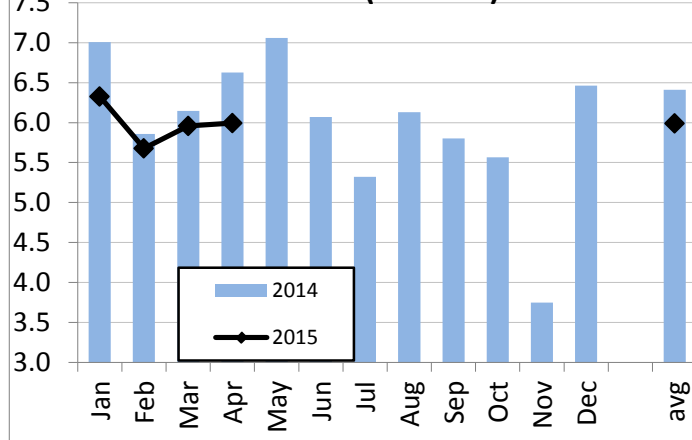


Figure 7: Slaughter Of Light Fowl by Month (millions)



SLAUGHTER OF LIGHT FOWL (MILLIONS)

TABLE 7

month	2009	2010	2011	2012	2013	2014	2015	6 YR (09-14) Month Avg.
Jan	6.33	5.80	5.90	6.98	7.63	7.01	6.33	6.61
Feb	5.36	5.22	5.59	5.57	6.20	5.86	5.68	5.63
Mar	6.32	6.50	6.56	7.15	6.49	6.15	5.96	6.53
Apr	6.58	6.59	5.99	7.95	8.31	6.63	5.99	7.01
May	6.32	5.78	6.42	7.91	7.21	7.06		6.78
Jun	6.36	5.88	5.30	6.25	5.40	6.07		5.88
Jul	5.94	5.42	5.00	4.45	5.60	5.32		5.29
Aug	5.46	5.64	5.85	6.00	6.81	6.13		5.98
Sep	5.20	6.12	5.68	5.39	5.50	5.80		5.61
Oct	5.85	5.01	5.56	5.60	5.73	5.57		5.55
Nov	4.44	4.07	4.92	5.12	3.59	3.75		4.31
Dec	5.53	5.63	5.60	6.89	6.45	6.47		6.09
<b>4 Month Avg.</b>	6.15	6.03	6.01	6.91	7.16	6.41	5.99	6.44
<b>4 Month Total</b>	24.58	24.11	24.03	27.64	28.63	25.64	23.95	25.77
<b>12 Month Total</b>	69.68	67.66	68.37	75.25	74.92	71.80		71.28

Source USDA NASS Poultry Slaughter



EXPORT OF TABLE EGGS IN THE SHELL IN 2015 (Thousand cases- 30 doz)

TABLE 8

Month \ To	North	Central	European		Southeast	Middle	Total	Total	% of U.S. Production	
	America	America	Caribbean	Union-28	East Asia	Asia	East	2015		2014
Jan	300.6	0.0	17.8	9.1	126.0	0.3	8.8	468.2	293.2	2.27
Feb	356.7	0.0	22.5	6.4	92.7	0.0	6.8	491.3	361.9	2.67
Mar	401.9	0.0	9.6	4.9	97.4	0.0	7.2	525.8	351.7	2.55
Apr	426.1	0.0	10.4	1.8	92.4	0.0	3.8	540.0	414.0	2.73
May									546.2	
Jun									418.7	
Jul									584.5	
Aug									543.5	
Sep									452.4	
Oct									612.3	
Nov									616.7	
Dec									974.5	
<b>4 Mo. Total</b>	1,485.2	0.0	60.2	22.3	408.6	0.3	26.6	2,025.2	1,420.7	2.56
<b>%</b>	73.3	0.0	3.0	1.1	20.2	0.0	1.3			

Source: USDA Foreign Agric. Service from U.S. Dept. of Commerce, U.S. Census Bureau, Foreign Trade Stats

EXPORT OF EGG PRODUCTS IN 2015 (EQUIVALENT: thousand cases- 30 doz)

TABLE 9

Month \ To	North	Central	European		Southeast	Middle	Total	Total	% of U.S. Production	
	America	America	Caribbean	Union-28	East Asia	Asia	East	2015		2014
Jan	208.0	8.8	6.5	118.0	132.6	14.0	8.3	517.3	516.4	2.51
Feb	194.9	8.0	5.5	58.0	114.9	11.9	2.9	436.1	518.2	2.37
Mar	184.4	27.0	10.2	96.4	110.9	13.3	13.4	463.9	504.8	2.25
Apr	209.6	9.4	6.1	36.1	124.2	5.1	3.8	402.1	488.7	2.03
May									428.7	
Jun									519.6	
Jul									396.5	
Aug									472.9	
Sep									514.7	
Oct									516.4	
Nov									425.4	
Dec									582.5	
<b>4 Mo. Total</b>	796.8	53.2	28.3	308.5	482.6	44.2	28.4	1,819.4	2,028.1	2.44
<b>%</b>	43.8	2.9	1.6	17.0	26.5	2.4	1.6			

Converted from metric tonnes at a rate of one metric tonne equals approximately 52.4 thirty dozen cases.

Source: USDA Economic Research Service from U.S. Dept. of Commerce, U.S. Census Bureau, Foreign Trade Stats.

TOTAL EGGS EXPORTED - 2015

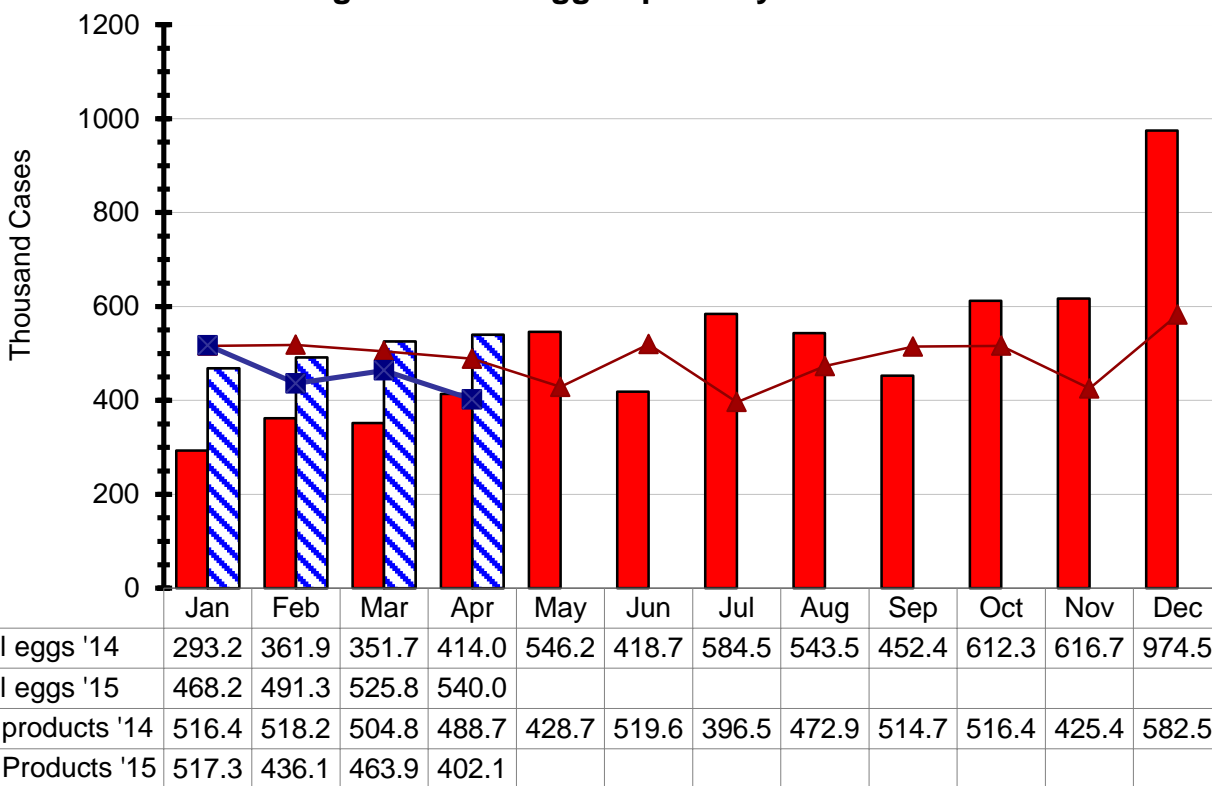
TABLE 10

	Table Eggs Produced	Table Eggs Exported		Egg Products Exported		Total Exported	
	(000) Cases	Cases	% of U.S.	Cases	% of U.S.	Cases	% of U.S.
Jan	20,633	468.2	2.27	517.3	2.51	985.4	4.78
Feb	18,375	491.3	2.67	436.1	2.37	927.4	5.05
Mar	20,636	525.8	2.55	463.9	2.25	989.7	4.80
Apr	19,761	540.0	2.73	402.1	2.03	942.1	4.77
May							
Jun							
Jul							
Aug							
Sep							
Oct							
Nov							
Dec							
<b>Total/Av</b>	<b>79,406</b>	<b>2,025.2</b>	<b>2.55</b>	<b>1,819.4</b>	<b>2.29</b>	<b>3,844.6</b>	<b>4.84</b>



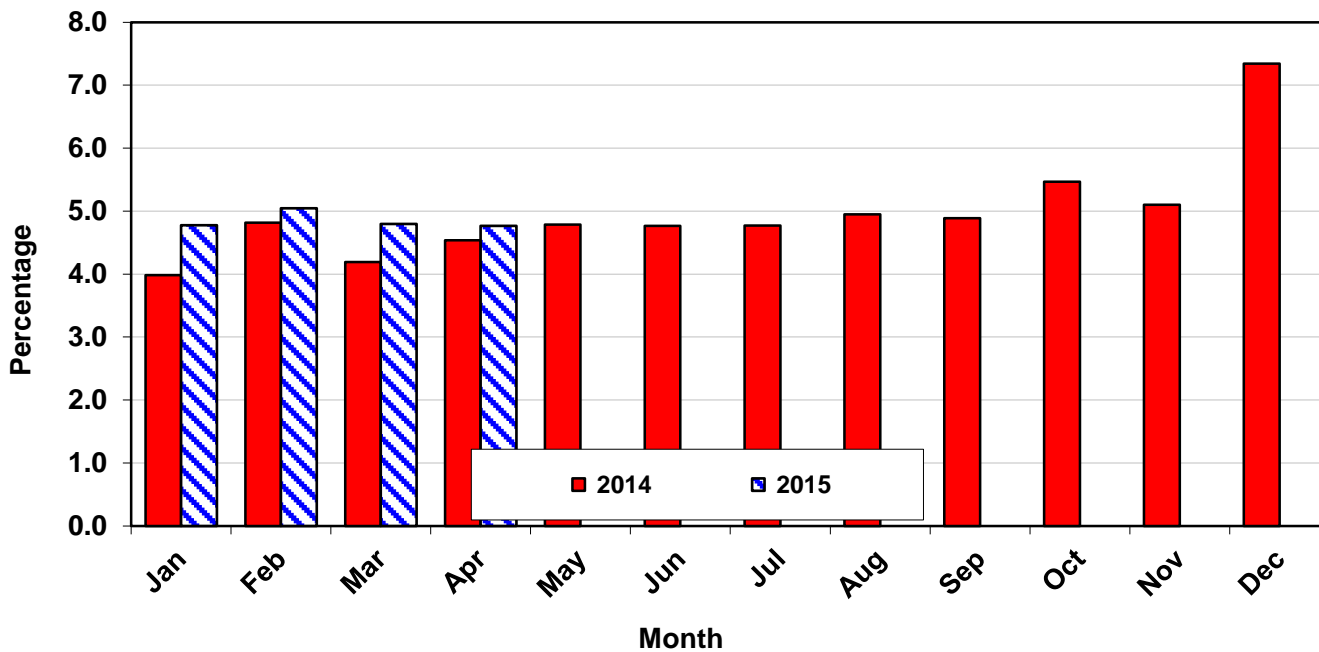


**Figure 8: U.S. Egg Exports by Month - 2014 and 2015**



Note: Information has been converted from metric tonnes at a rate of 42 lbs. per case of liquid egg (edible + inedibles)

**Figure 9: Exported Eggs by Month - 2014 and 2015**  
(percentage of eggs produced)



ALL EGGS PRODUCED, INCLUDING HATCHING EGGS, BY REGION (Million) - 2015

TABLE 11

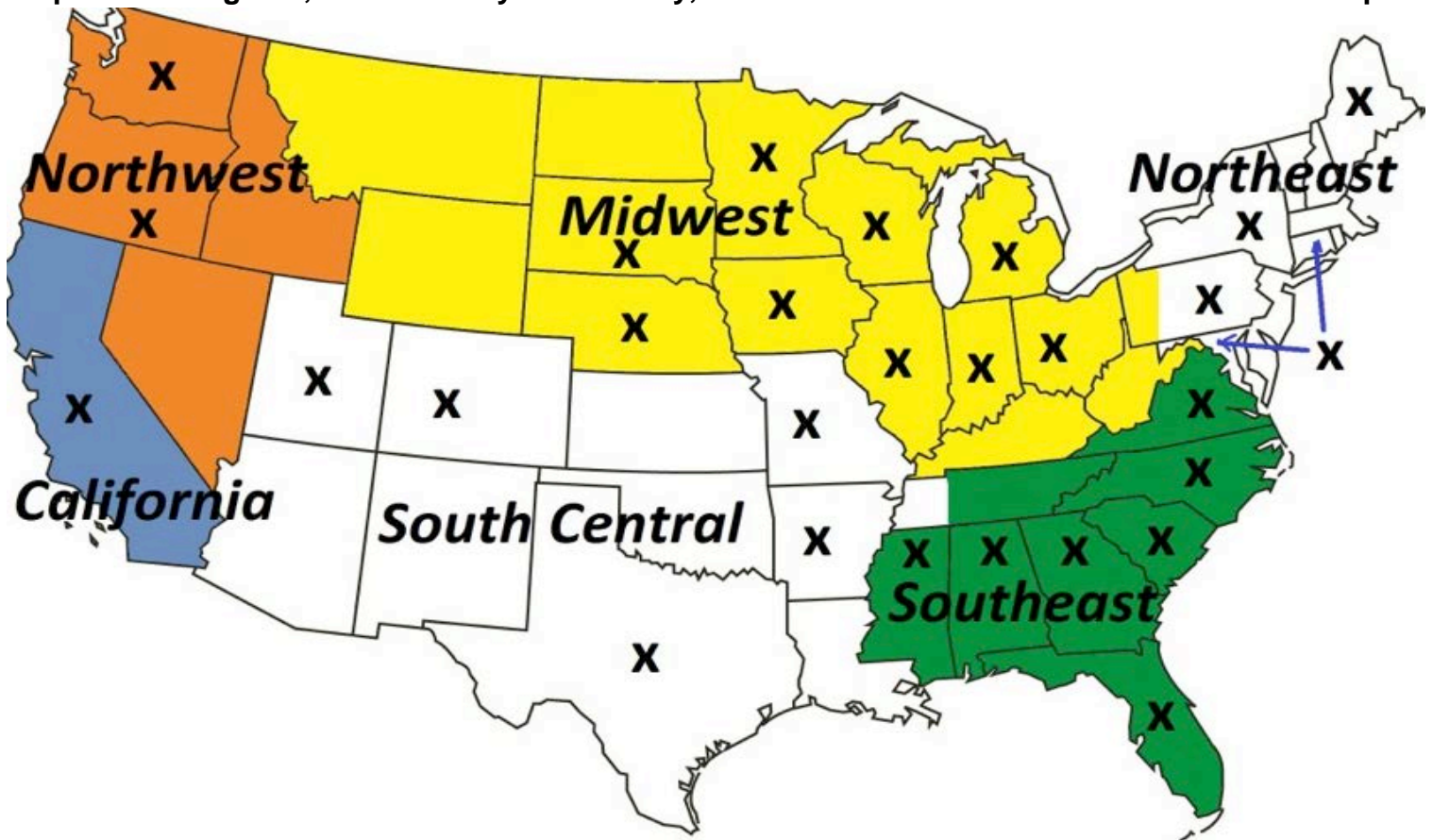
month	Northeast*	Southeast	South Central	Midwest	Northwest	California	U.S. Total
Jan	1,002	1,395	1,006	3,969	162	313	8,540
Feb	894	1,253	897	3,535	189	287	7,620
Mar	1,002	1,410	1,022	3,959	182	320	8,548
Apr	828	1,348	998	3,776	183	311	8,212
May							
Jun							
Jul							
Aug							
Sep							
Oct							
Nov							
Dec							
<b>4 Month Avg.</b>	932	1,352	981	3,810	179	308	8,230
<b>% of total</b>	11.3	16.4	11.9	46.3	2.2	3.7	

Source: USDA NASS Chickens and Eggs

Note: All States are not represented (see map below)

\* The drop in the Northeast region number is mostly explained by not having an April count for CT and ME.

Map of U.S. Regions, as defined by Urner Barry, and the location of information used in this report



Notes

The x's mark the States where there is USDA data available on number of layers, egg production and percent molt.

Northwest is the sum of OR and WA

South Central is the sum of AR, UT, CO, MO and TX

Northeast is the sum of CT, MD, ME, NY and PA

Southeast is the sum of AL, FL, GA, MS, NC, SC and VA

Midwest is the sum of IA, IL, IN, MI, MN, NE, OH, WI, SD, MT and WY

California is the state of California only



**ALL LAYERS BY REGION, INCLUDING BREEDERS (Million) - 2015**

**TABLE 12**

month	Northeast*	Southeast	South Central	Midwest	Northwest	California	U.S. Total
Jan	39.9	64.7	45.1	164.5	9.7	13.4	363.7
Feb	39.5	64.6	44.7	164.2	9.6	13.3	362.3
Mar	39.2	65.2	45.0	164.0	9.6	13.2	362.5
Apr	32.9	64.9	45.4	160.4	9.4	13.2	358.5
May							
Jun							
Jul							
Aug							
Sep							
Oct							
Nov							
Dec							
<b>4 Month Avg.</b>	37.9	64.8	45.1	163.3	9.6	13.3	361.8
<b>% of total</b>	10.5	17.9	12.5	45.1	2.6	3.7	

Source: USDA NASS Chickens and Eggs

\* The drop in the Northeast region number is mostly explained by not having an April count for CT and ME.

**TABLE EGG LAYERS IN FLOCKS 30,000 AND ABOVE BY REGION (Million) - 2015**

**TABLE 13**

month	Northeast*	Southeast	South Central	Midwest	Northwest	California	U.S. Total
Jan	37.1	32.8	29.3	159.3	9.4	12.9	298.3
Feb	36.7	32.6	28.9	159.1	9.3	12.8	296.8
Mar	36.5	32.9	29.1	158.8	9.3	12.7	296.5
Apr	30.4	32.2	29.4	155.2	9.1	12.7	291.9
May							
Jun							
Jul							
Aug							
Sep							
Oct							
Nov							
Dec							
<b>4 Month Avg.</b>	35.2	32.6	29.2	158.1	9.3	12.8	295.9
<b>% of total</b>	11.9	11.0	9.9	53.4	3.1	4.3	
<b>Table/total layers (%)</b>	92.9%	50.3%	64.7%	96.8%	96.8%	96.3%	81.8%

Source: USDA NASS Chickens and Eggs

\* The drop in the Northeast region number is mostly explained by not having an April count for CT and ME.

**TOTAL MOLT (in-molt plus post-molt) BY REGION (Simple average of reporting States, %) - 2015**

**TABLE 14**

month	Northeast*	Southeast	South Central	Midwest	Northwest	California	Simple avg. of
Jan	3.0	19.0	21.5	18.9	24.5	34.5	20.2
Feb	4.0	21.6	23.5	18.9	21.3	33.0	20.4
Mar	3.5	19.9	22.0	18.8	23.3	35.0	20.4
Apr	4.4	18.1	20.6	18.1	24.3	33.0	19.7
May	1.1	19.1	20.1	21.2	24.5	36.0	20.3
Jun							
Jul							
Aug							
Sep							
Oct							
Nov							
Dec							
<b>5 Month Avg.</b>	3.2	19.6	21.6	19.2	23.6	34.3	20.2
<b>year 2013 avg.</b>	6.5	17.0	20.7	20.0	30.7	30.7	19.0

Source: USDA NASS Chickens and Eggs

Notes: average molt is estimated as the simple average of the reported States

\* The change in the Northeast region is in part explained by not having an April count for CT and ME.



TABLE EGG LAYERS IN LEADING STATES - (LAYERS IN 30,000+ HEN FLOCKS) - 2015

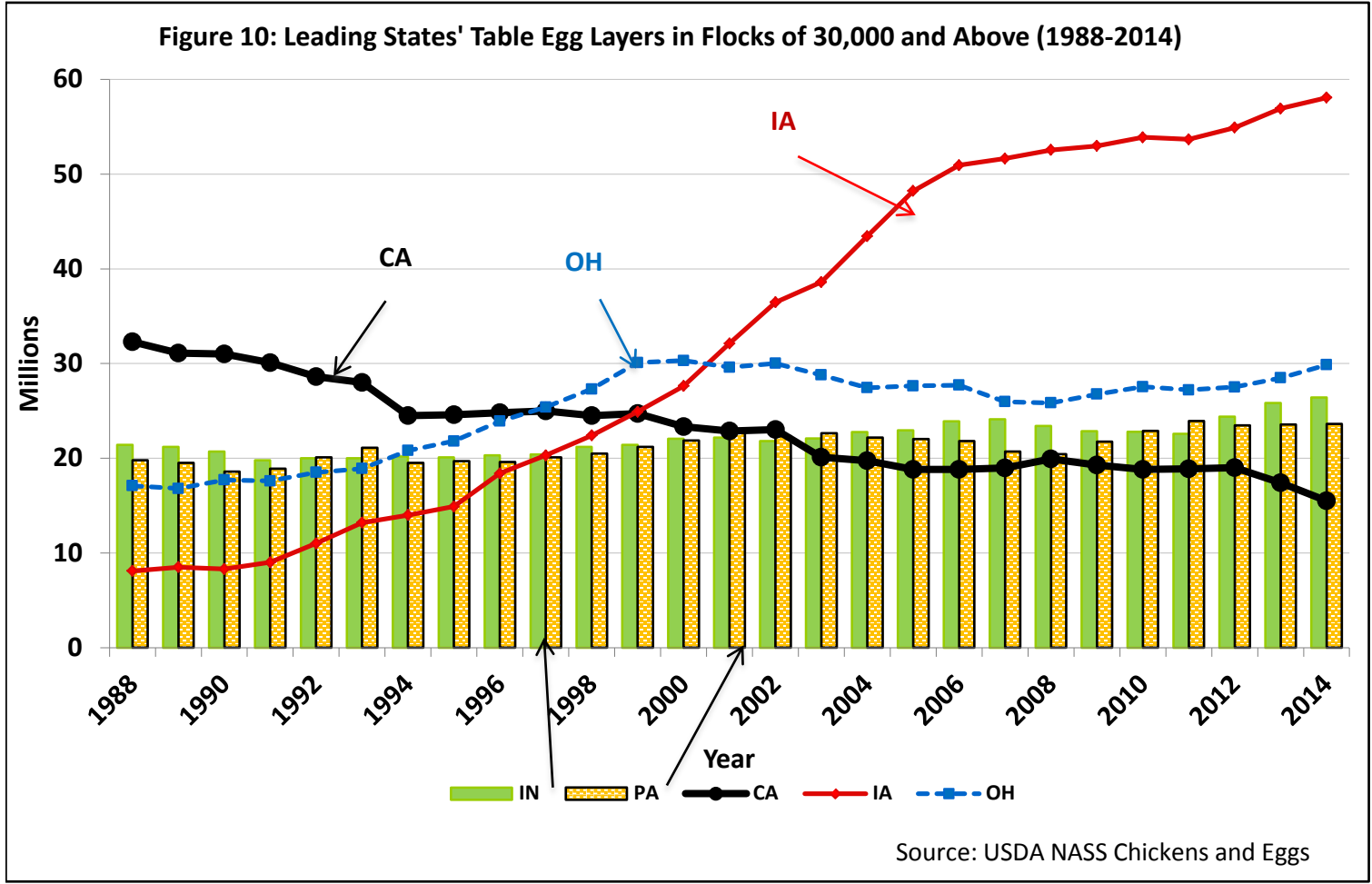
TABLE 15

month	IA	OH	IN	PA	CA	TX	U.S.
Apr-2014	58.02	29.85	26.30	23.24	16.34	14.66	296.25
Jan-2015	58.49	29.69	25.89	23.99	12.88	14.89	298.32
Feb-2015	58.33	29.94	25.74	23.66	12.84	14.76	296.76
Mar-2015	58.23	30.28	25.42	23.62	12.72	14.79	296.51
Apr-2015	54.88	30.83	25.20	23.56	12.73	14.85	291.95
May-2015							
Jun-2015							
Jul-2015							
Aug-2015							
Sep-2015							
Oct-2015							
Nov-2015							
Dec-2015							
<b>4 Month Avg.</b>	<b>57.48</b>	<b>30.18</b>	<b>25.56</b>	<b>23.71</b>	<b>12.79</b>	<b>14.82</b>	<b>295.88</b>
							<b>97.4</b>

Source: USDA NASS Chickens and Eggs

% of all U.S. table egg layers

Figure 10: Leading States' Table Egg Layers in Flocks of 30,000 and Above (1988-2014)



Source: USDA NASS Chickens and Eggs



**PROJECTED U.S. EGG-TYPE HATCHERY SUPPLY FLOCK (Millions)**

**TABLE 16**

month	2009	2010	2011	2012	2013	2014	2015
Jan	2.664	2.730	3.087	2.706	2.791	2.436	2.608
Feb	2.768	2.716	3.123	2.659	2.830	2.515	2.535
Mar	2.704	2.745	3.108	2.653	2.786	2.503	2.553
Apr	2.695	2.785	3.039	2.703	2.786	2.468	2.610
May	2.727	2.828	2.998	2.672	2.649	2.555	2.619
Jun	2.664	2.910	2.996	2.657	2.745	2.476	2.664
Jul	2.720	2.999	2.883	2.672	2.579	2.540	2.682
Aug	2.721	3.010	2.848	2.731	2.613	2.536	2.689
Sep	2.620	3.019	2.877	2.732	2.630	2.472	2.605
Oct	2.701	3.023	2.779	2.819	2.588	2.530	2.718
Nov	2.734	2.998	2.755	2.778	2.515	2.497	
Dec	2.692	3.099	2.713	2.791	2.537	2.439	
<b>10 month avg.</b>	2.698	2.877	2.974	2.700	2.700	2.503	2.628
<b>12 month avg.</b>	2.701	2.905	2.934	2.714	2.671	2.497	

Source: USDA NASS Chickens and Eggs

Note: The hatchery supply flock estimates are made by using 7 to 18 months prior hatch minus 9% mortality

**PULLETS TO BE HOUSED BASED UPON U.S. HATCH 5 MONTH AGO (Millions)**  
(47.5% of CHICKS PLACED multiplied by a 95% LIVABILITY FACTOR)

**TABLE 17**

month	2010	2011	2012	2013	2014	2015	2010 to '14 month avg.
Jan	16.8	16.7	18.7	17.0	17.3	18.0	17.3
Feb	18.1	18.1	18.0	17.0	18.8	19.7	18.0
Mar	16.9	18.6	17.0	16.5	19.1	20.1	17.6
Apr	15.8	17.5	16.9	16.5	18.8	16.5	17.1
May	17.8	17.0	17.6	16.7	18.6	18.4	17.6
Jun	17.5	18.3	18.0	19.6	20.1	18.9	18.7
Jul	17.7	16.9	17.9	18.9	18.5	18.4	18.0
Aug	20.3	19.7	19.2	19.7	20.0	21.6	19.8
Sep	21.5	19.4	18.5	20.5	20.6	21.4	20.1
Oct	19.5	19.4	20.1	22.3	22.2		20.7
Nov	19.1	17.6	17.5	18.8	19.9		18.6
Dec	17.2	16.7	16.1	17.7	19.1		17.3
<b>9 month avg.</b>	18.0	18.0	18.0	18.0	19.1	19.2	18.2
<b>Annual Avg.</b>	18.2	18.0	18.0	18.4	19.4		18.4
<b>Total</b>	218.0	215.9	215.6	221.1	232.9		220.7

Source: USDA NASS Chickens and Eggs

% Change to date

0.75

Note: The number of pullets to be housed was reduced by 5 million based on the number reported as lost to avian influenza. We assumed the reduction as evenly spread during the period between May and September 2015 (assuming that the ages of affected birds was evenly distributed).



PROJECTED U.S. TABLE EGG FLOCK MORE THAN 72 WEEKS OF AGE (Millions)

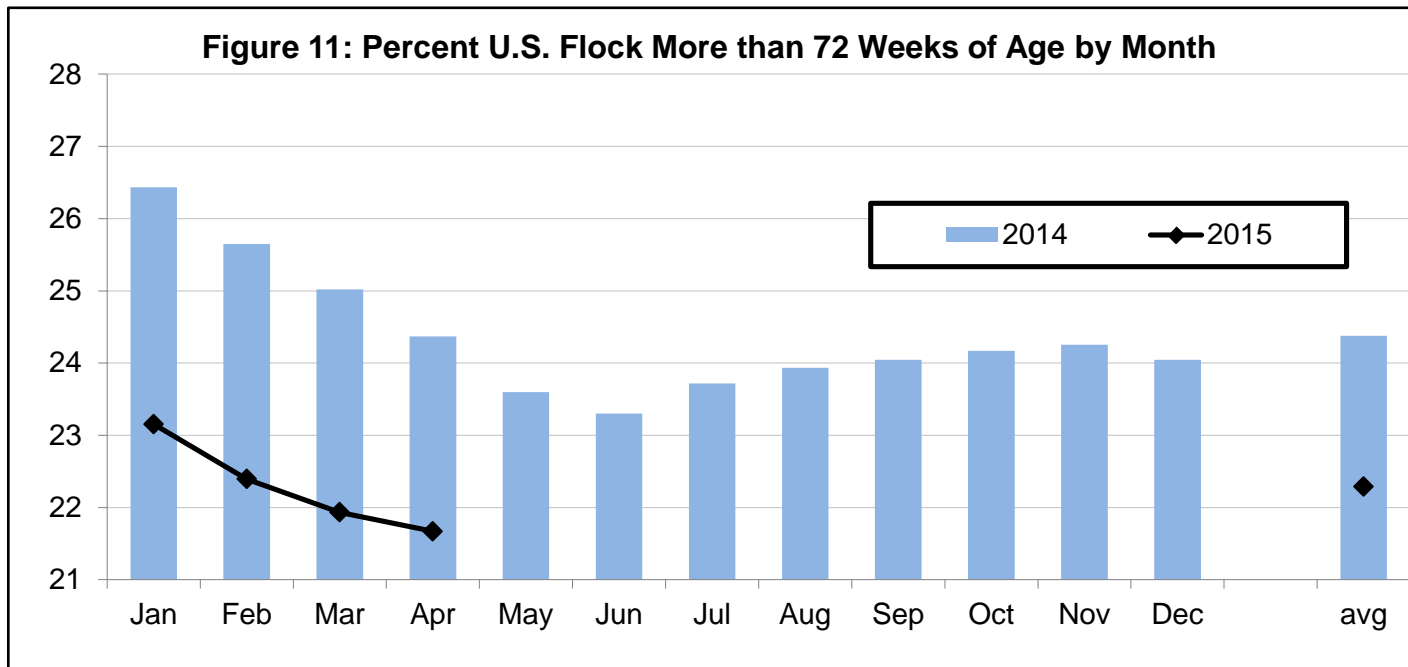
TABLE 18

month	Number				% of National Flock over 72 wks		
	2012	2013	2014	2015	2013	2014	2015
Jan	219.7	217.0	223.2	235.5	27.3	26.4	23.2
Feb	219.6	216.0	225.0	236.4	27.9	25.7	22.4
Mar	217.9	215.5	227.7	237.4	28.3	25.0	21.9
Apr	217.3	215.0	230.1	235.0	27.9	24.4	21.7
May	217.9	214.1	232.0	*	27.8	23.6	
Jun	217.6	215.8	232.4	*	27.3	23.3	
Jul	218.6	216.7	232.0	*	27.1	23.7	
Aug	218.1	217.2	232.3	*	27.5	23.9	
Sep	217.2	219.2	232.4	*	27.0	24.0	
Oct	218.0	221.4	232.3		26.5	24.2	
Nov	218.0	222.7	233.4		26.9	24.3	
Dec	217.4	224.3	234.8		26.5	24.0	
<b>9 month avg.</b>	218.2	216.3	229.7	237.0			
<b>4 month avg.</b>					27.8	25.4	22.3
<b>12 month avg.</b>	218.1	217.9	230.6		27.3	24.4	

Source: Egg Industry Center based on USDA NASS Chickens and Eggs data

Note: The number of layers younger than 72 weeks of age are estimated as the sum of the Egg-Type Chicks Hatched between 5 and 17 months before adjusted by a 9% loss

\* Special note: A special adjustment to this calculation will be needed as a result of the avian influenza outbreak, but it will depend on some assumptions about the ages of the layers affected.



## **FLOCK SIZE PROJECTION**

The Egg Industry Center is reviewing the effects of the avian influenza outbreak to the flock projections. EIC will release a special report about the repopulation of the U.S. layer flock in the near future. The assumptions in the repopulation report will provide the basis of the calculations used here.

Tables 21 and 22 will not be reported until EIC can adjust the flock projection assumptions as outlined above.

**TABLE 20**

**U.S. FLOCK SIZE PROJECTED VS ACTUAL (1st OF THE MONTH) - 2015 (Millions)**  
**Projected on Jan. 27, 2015 (EIC). Not changed during the year.**

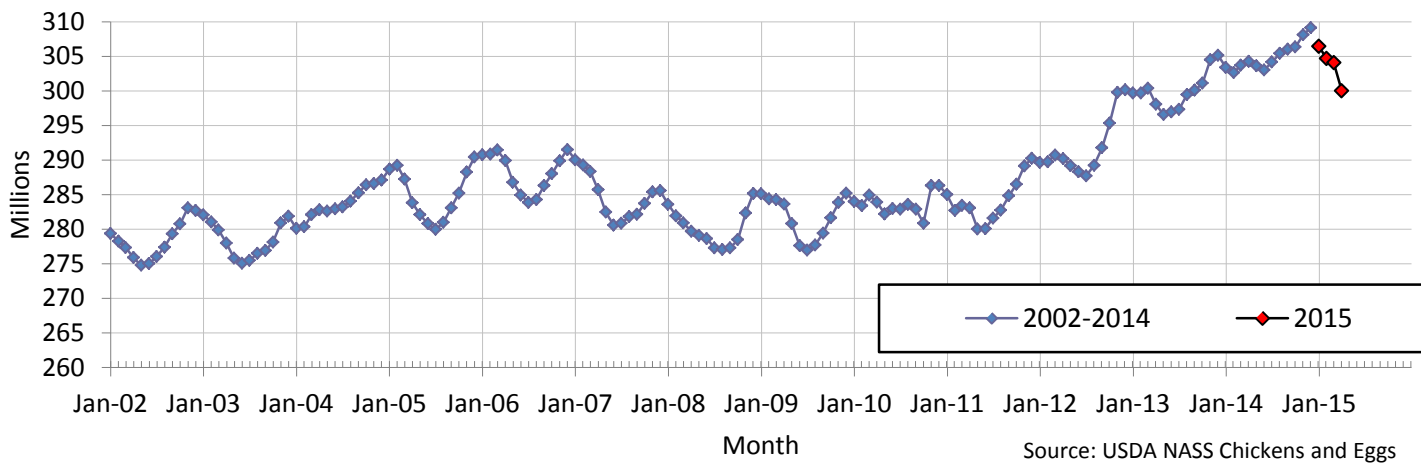
Month	Beginning count		Replacements		Slaughter	
	Projected	Actual	Projected	Actual	Projected	Actual
Jan	304.8	308.2	17.8	17.8	6.7	6.3
Feb	303.0	304.6	19.5	19.5	5.7	5.7
Mar	304.1	305.1	20.0	20.0	6.7	
Apr	306.1	304.1	16.5	16.5	7.0	
May	302.2	295.9	19.4	19.4	6.9	
Jun	302.3		19.4	19.9	6.4	
Jul	301.8		18.6	19.3	5.6	
Aug	302.3		20.7		6.2	
Sep	304.2		20.7		5.8	
Oct	304.9		21.1		5.8	
Nov	307.3		19.8		4.8	
Dec	310.6		18.2		6.3	
<b>Curr. avg.</b>	<b>304.0</b>	<b>305.8</b>	<b>18.8</b>	<b>18.9</b>	<b>6.2</b>	<b>6.0</b>

1. Note: Projections are based upon USDA data and are updated monthly.
2. Please note: The above projections are updated monthly. The current projections are shown in Table 19.
3. Projected = Egg Industry Center
4. Actual = Chickens and Eggs Report - USDA NASS
5. USDA replacements are projected ahead from previous hatch statistics with mortality and placement adjustments.
6. Mortality and missing birds are not shown in the above table.

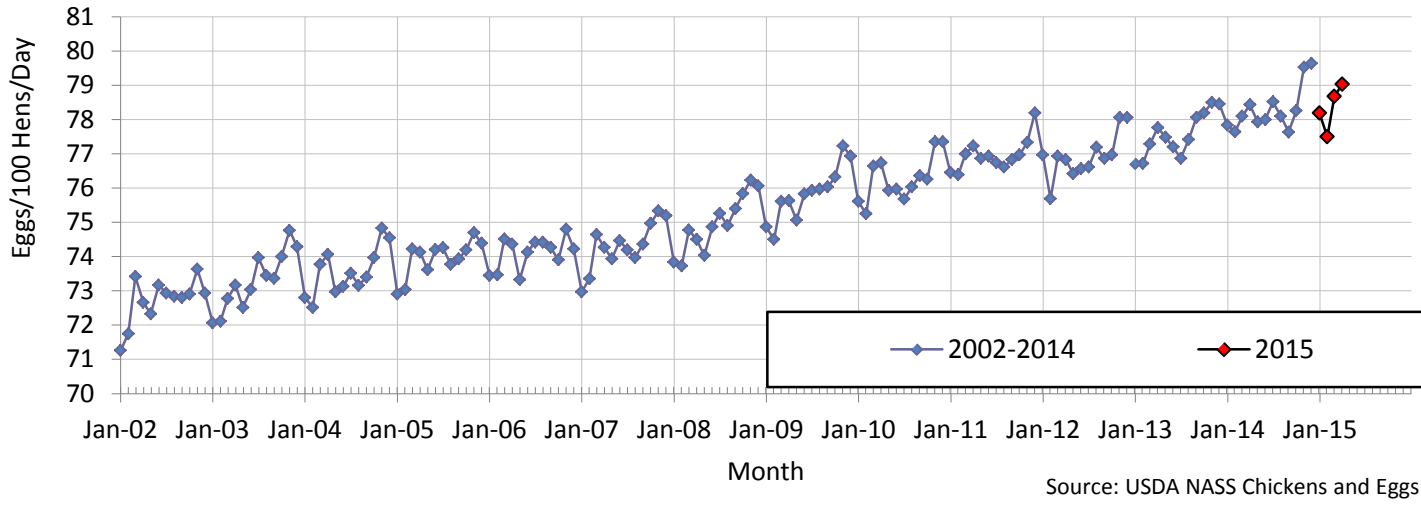
NOTE: the projections in table 20 were made before the USDA Chickens and Eggs Report adjustment.



**Figure 12: U.S. Monthly Table-Egg Layers (2002-2015)**

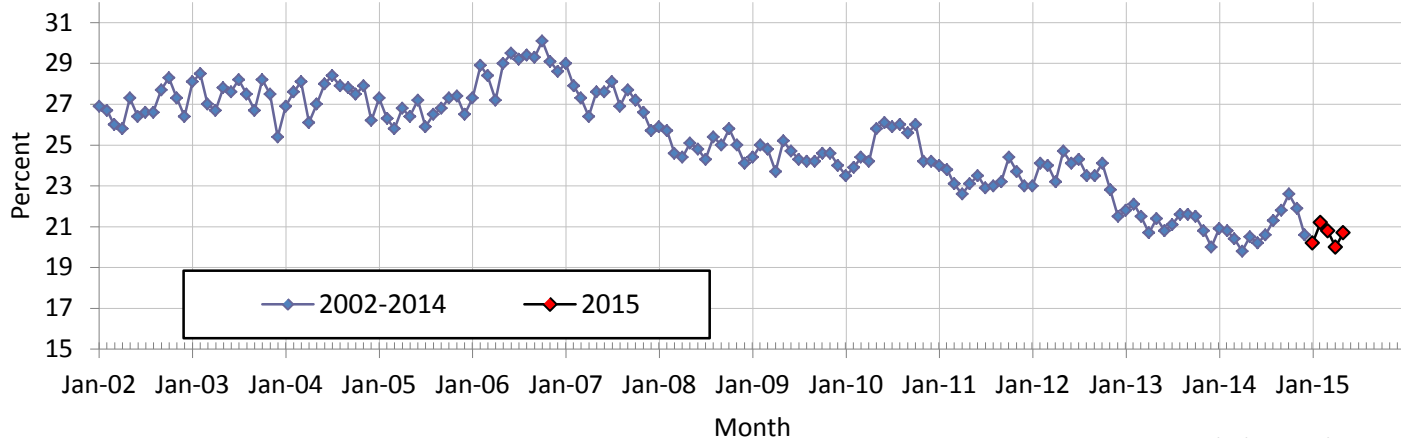


**Figure 13: U.S. Table Eggs per Hundred Hens per Day by Month (2002-2015)**



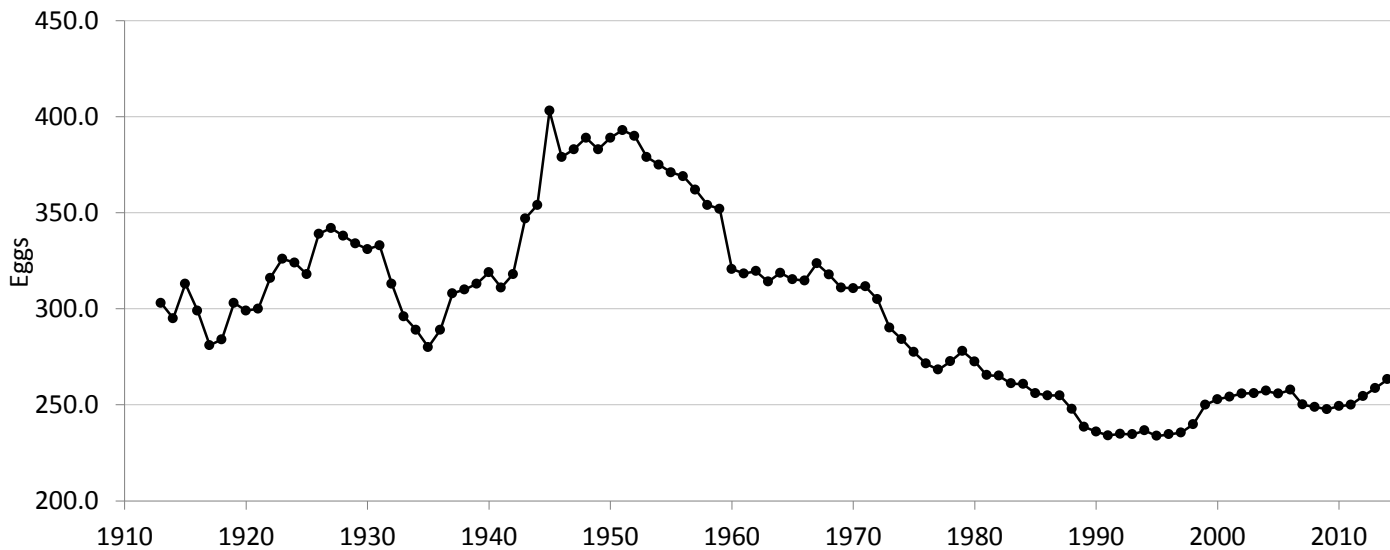


**Figure 14: Monthly Percent of U.S. Flock Molted (2002-2015)**



Source: USDA NASS Chickens and Eggs

**Figure 15: U.S. Per Capita Egg Consumption by Year (1913-2015)**



Source: USDA ERS



**SUMMARY TO DATE**

**Table 23**

		2014	2015	% Change
HATCH of EGG-TYPE STRAIGHT RUN (THOUSANDS) (U.S.) (Total)	Jan to Apr	175,380	186,986	6.6
TABLE-EGG LAYERS (MILLIONS) (U.S.) (Avg.)	Jan to Apr	303.5	303.8	0.1
TABLE EGGS (MILLIONS/MONTH) (U.S.) (Avg.)	Jan to Apr	7,104	7,147	0.6
RATE OF LAY (%) (Avg.)	Jan to Apr	78.0	78.4	0.3
U.S. TABLE EGG AVG. CASES/WEEK (THOUSANDS)	Jan to Apr	1,657	1,668	0.6
AVG MONTHLY CASES OF EGGS BROKEN (MILLION) (U.S.)	Jan to Apr	5.871	6.118	4.2
		<b>2013</b>	<b>2014</b>	<b>Difference</b>
PERCENT OF U.S. FLOCK IN or POST MOLT (Avg.)	Jan to May	20.5	20.6	0.1
AVERAGE PULLETS ADDED/MONTH (MILLIONS) (U.S.)	Jan to Sep	19.1	19.2	0.1

Note: U.S. layer numbers and egg prices are projected 12-months into the future in other reports published by the Egg Industry Center. Contact Maro Ibarburu at maro@iastate.edu to be placed on the mailing list to receive monthly copies of these reports.

**Webpages of some of the sources of information,  
Access these sites by clicking on the blue addresses below:**

- University of California Poultry Page <http://animalscience.ucdavis.edu/avian/>
- USDA NASS Chickens and Eggs <http://usda.mannlib.cornell.edu/MannUsda/viewDocumentInfo.do?documentID=1028>
- USDA NASS Poultry Slaughter <http://usda.mannlib.cornell.edu/MannUsda/viewDocumentInfo.do?documentID=1131>
- USDA NASS Egg Products <http://usda.mannlib.cornell.edu/MannUsda/viewDocumentInfo.do?documentID=1057>
- USDA ERS Livestock and Meat Trade Data. <http://www.ers.usda.gov/data/MeatTrade/BroilerTurkeyMonthly.htm>
- USDA FAS <http://www.fas.usda.gov/gats/ExpressQuery1.aspx>
- USDA NASS Cold Storage <http://usda.mannlib.cornell.edu/MannUsda/viewDocumentInfo.do?documentID=1034>
- USDA AMS Poultry Market News and Analysis <http://marketnews.usda.gov/portal/py>

Maro Ibarburu, EIC Business Analyst  
Iowa State University, Ames, IA  
Phone (515) 294-8132  
E-mail: [maro@iastate.edu](mailto:maro@iastate.edu)



Don -  
Thank you for all your contributions to  
this industry. You will be forever missed.  
Your friends at EIC