

U.S. Flock Trends and Projections

March 2, 2016



Compiled by
Maro Ibarburu

Sponsored in part by:



American Egg Board

The Egg Industry Center Market Reports & Industry Analysis are compiled in the memory of their creator, Don D. Bell, Poultry Extension Specialist Emeritus - UC Davis.

U.S. EGG INDUSTRY STATISTICAL REPORT SUMMARY

* The January hatch (straight-run chicks) was 7.7% higher than in 2015. This projects forward to a 21.5 million pullet placement for June of 2016 which is 2.7 million larger than June of 2015 placement (18.7).

* Current (January average, 2016) U.S. table egg layer number (292.3 million) is 17.2 million smaller than last year's number at this time (309.5 million), and up 2.6 million compared to last month (289.7 million).

* In January, Iowa led the nation with 39.1 million laying hens compared to 32.0 million in Ohio, 29.1 million in Indiana, and 23.9 million in Pennsylvania. California (with 11.9 million layers) lost it's 5th position to Texas with 16.5 million layers.

* The January U.S. rate of lay was estimated to be 78.2% which is the same as January 2015 level. The total number of table eggs produced in January 2016 was 6.6% lower than the January 2015 production.

* The December 2015 number of eggs exported was 62% lower than last year (December 2014) and 34% higher than last month November 2015). The December exports represented 3.1% of the number of eggs produced.

* Shell eggs broken for products in January 2016 totaled 5.635 million cases, 15.1% less than in January 2015 (6.634 million cases).

* The egg-type hatchery supply flock is projected to be 12% higher in Jan-Jul 2016 than in Jan-Jul 2015 (table 16).

Monthly Highlights (Compared to January a year ago) (% change) - U.S.

	2014	2015	% Change
Hatch - Egg-Type Straight Run (thousands) (U.S.)	44,174	47,576	7.7
Table Egg Layers (millions) (U.S.)	309.5	292.3	-5.5
Rate of lay (percent)	78.2	78.2	0.0
Molting (February 1, 2016) (percent in + out of a molt)	20.8	23.2	11.5

Year-end layers (millions) - U.S.

Year	2006	2007	2008	2009	2010	2011	2012	2013	2014	2015	2016
Million	290.6	284.7	285.6	285.2	286.8	290.1	298.6	308.2	311.3	291.1	315.1*

* estimated value

SPECIAL NOTE:

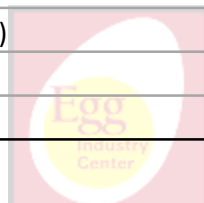
USDA NASS made some adjustments to their final estimates for the period between December 2013 and January 2016. Therefore some of the figures are different than in the previous report. Also, data for the previous month may be changed by the USDA to reflect updates following late submissions by responders.



TABLE OF CONTENTS

Table Name	Table #	Page	Sheet or Section
Egg Type: U.S. Eggs In Incubators and Straight Run Hatch	1	3	U.S. Volume
Average U.S. Layers and Table Egg Layers	2	3	U.S. Volume
U.S. All Eggs, Table Eggs and Rate of Lay	3	4	U.S. Volume
Shell Eggs Broken Under Federal Inspection	4	5	U.S. Volume
Per Capita Egg Consumption by Quarter	5	5	U.S. Volume
Induced Molt Percent - U.S. Totals (1st of Month)	6	6	U.S. Volume
Slaughter of Light Fowl	7	6	U.S. Volume
Export of Table Eggs In the Shell In 2015	8	7	Trade
Export of Egg Products In 2015	9	7	Trade
Total Eggs Exported - 2015	10	7	Trade
All Eggs Produced, Including Hatching Eggs, by Region - 2015	11	9	Regional
All Layers by Region, Including Breeders - 2015	12	10	Regional
Table Egg Layers In Flocks 30,000 and Above by Region - 2015	13	10	Regional
Total Molt by Region (Simple Average of Reporting States, %) - 2015	14	10	Regional
Table Egg Layers In Flocks 30,000 and Above In Leading States (Average) - 2015	15	11	Regional
Projected U.S. Egg-Type Hatchery Supply Flock - 2015	16	12	Projections
U.S. Pullets to be Housed Based Upon Hatch 5 Month Ago	17	12	Projections
Projected U.S. Table Egg Flock Less Than 72 Weeks of Age	18	13	Projections
First of the Month Projection Estimates of U.S. Table Egg Layers (millions)	19	14	Projections
Projected vs. Actual First of the Month (U.S. Flock Size) - 2015	20	14	Projections
2015 Bird Flow by Month	21	15	Projected Flock
2015 United States Flock Size Projections	22	16	Previous Projections
Summary to Date	23	19	Final

Figure Name	Figure #	Page	Sheet or Section
Egg-Type Hatch Straight Run by Month (1,000)	1	3	U.S. Volume
Table Egg Layers by Month (Millions)	2	4	U.S. Volume
Rate of Lay (Percent)	3	4	U.S. Volume
Shell Eggs Broken for Further Processing by Month (Million cases)	4	5	U.S. Volume
Shell Eggs Broken by Month (Percent of Total Table Eggs)	5	5	U.S. Volume
Monthly Percent Molted	6	6	U.S. Volume
Slaughter of Light Fowl by Month (Millions)	7	6	U.S. Volume
U.S. Egg Exports by Month - 2014 and 2015	8	8	Trade
U.S. Exported Eggs by Month - 2014 and 2015	9	8	Trade
Leading States' Table Egg Layers In Flocks of 30,000 and Above (1988-2014)	10	11	Regional
Percent of U.S. Flock More Than 72 Weeks of Age by Month	11	13	Projections
U.S. Monthly Table-Egg Layers (2002-2015)	12	17	Trends
U.S. Table Eggs per Hen per Day by Month (2002-2015)	13	17	Trends
Monthly Percent of U.S. Flock Molted (2002-2015)	14	17	Trends
U.S. Per Capita Egg Consumption by Year (1913-2015)	15	18	Trends

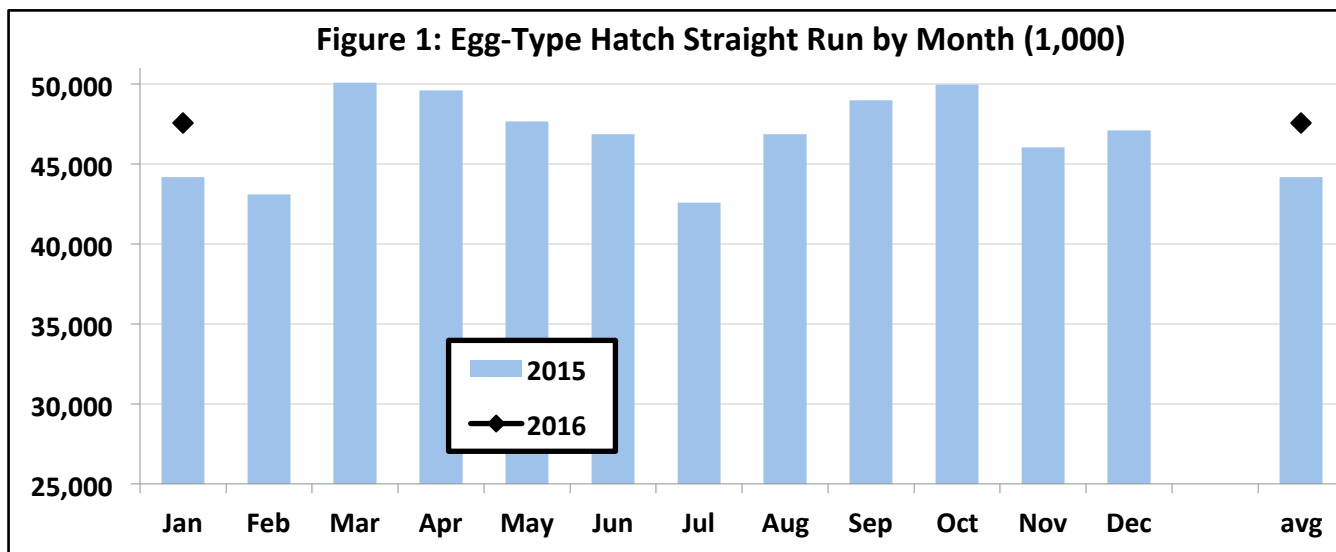


EGG TYPE: EGGS IN INCUBATORS (on the 1st of the month) and STRAIGHT RUN HATCH (U.S.) **TABLE 1**

EGG-TYPE Eggs in Incubators (thousands)				EGG-TYPE Straight Run Hatch (thousands)			
month	2015	2016	Change (%)	month	2015	2016	Change %
Jan	42,237	47,981	13.6	Jan	44,174	47,576	7.7
Feb	40,464	47,058	16.3	Feb	43,091		
Mar	46,064			Mar	50,077		
Apr	49,281			Apr	49,595		
May	47,700			May	47,652		
Jun	47,552			Jun	46,868		
Jul	43,666			Jul	42,582		
Aug	45,286			Aug	46,863		
Sep	47,196			Sep	48,972		
Oct	49,844			Oct	49,953		
Nov	47,158			Nov	46,038		
Dec	48,314			Dec	47,103		
2 Month Avg.	41,351	47,520	14.9	1 Month Avg.	44,174	47,576	7.7
2 Month Total	82,701	95,039		1 Month Total	44,174	47,576	
12 Month Total	554,762			12 Month Total	562,968		

Source: USDA NASS Chickens and Eggs

Figure 1: Egg-Type Hatch Straight Run by Month (1,000)

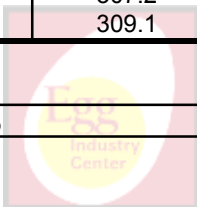


AVERAGE U.S. LAYERS AND TABLE EGG LAYERS 2014/2015 (MILLIONS) **TABLE 2**

month	All Layers			Table Egg Layers			
	2015	2016	Change (%)	2014	2015	2016	Change (%)
Jan	368.4	349.3	-5.2	307.2	309.5	292.3	-5.5
Feb	365.0			306.7	308.1		
Mar	365.9			307.7	308.1		
Apr	366.0			308.3	303.6		
May	357.9			307.6	286.8		
Jun	332.8			307.0	274.2		
Jul	332.4			308.2	275.1		
Aug	334.0			309.6	276.6		
Sep	334.9			310.4	278.9		
Oct	338.3			310.7	281.7		
Nov	340.6			312.7	285.5		
Dec	346.3			313.0	289.7		
1 Month Avg.	368.4	349.3	-5.2	307.2	309.5	292.3	-5.5
Annual Avg.	348.5			309.1	289.8		

Source: USDA NASS Chickens and Eggs

Table egg layers as a % of all layers to date (2015): 83.7%

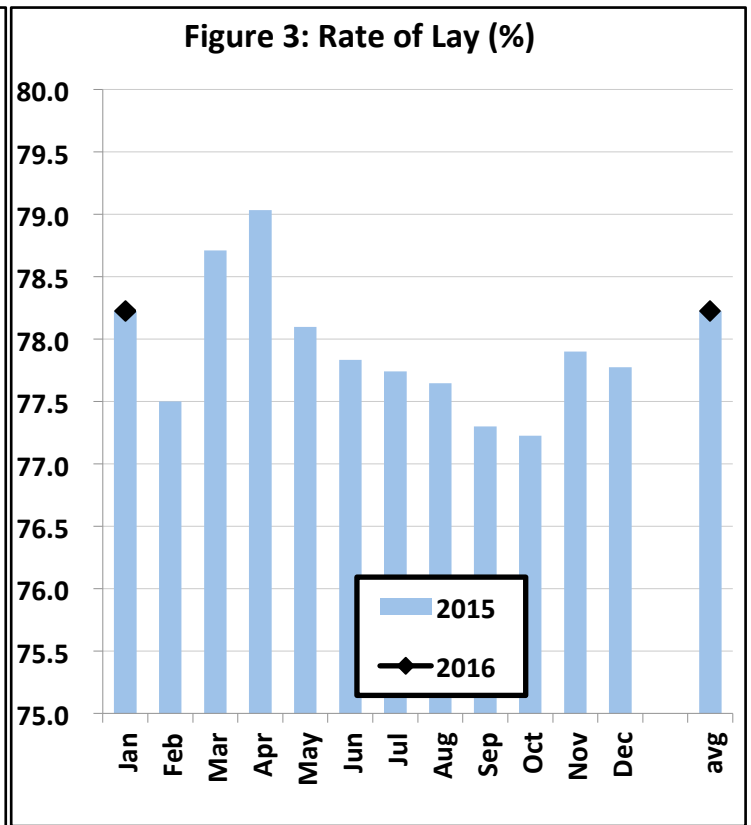
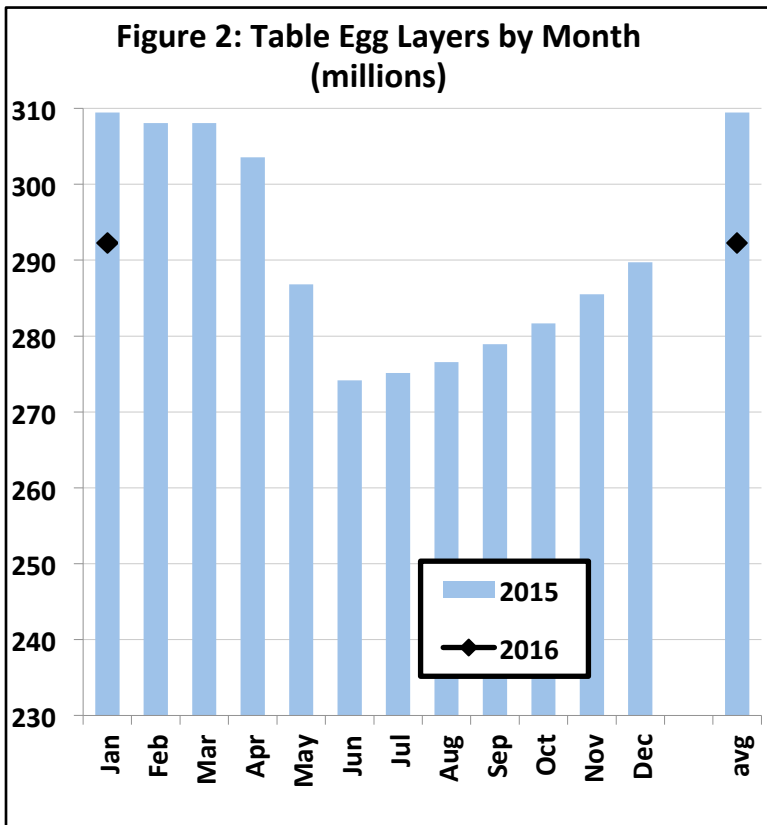


U.S. ALL EGGS, TABLE EGGS AND RATE OF LAY (ALL STATES)

TABLE 3

month	All Eggs (millions)			Table Eggs - human consumption (millions)			Rate of Lay (Table)	
	2015	2016	Change (%)	2015	2016	Change (%)	2015	2016
Jan	8,613	8,145	-5.4	7,504	7,008	-6.6	78.2	78.2
Feb	7,688			6,685			77.5	
Mar	8,635			7,517			78.7	
Apr	8,294			7,198			79.0	
May	8,083			6,942			78.1	
Jun	7,512			6,402			77.8	
Jul	7,778			6,630			77.7	
Aug	7,802			6,656			77.6	
Sep	7,565			6,467			77.3	
Oct	7,874			6,744			77.2	
Nov	7,764			6,673			77.9	
Dec	8,119			6,986			77.8	
1 Month Avg.	8,613	8,145	-5.4	7,504	7,008	-6.6	78.2	78.2
Annual Avg.	7,977			6,867			77.9	
Total	95,727	8,145		82,404	7,008			

Source: USDA NASS Chickens and Eggs



SHELL EGGS BROKEN UNDER FEDERAL INSPECTION (MILLION CASES)

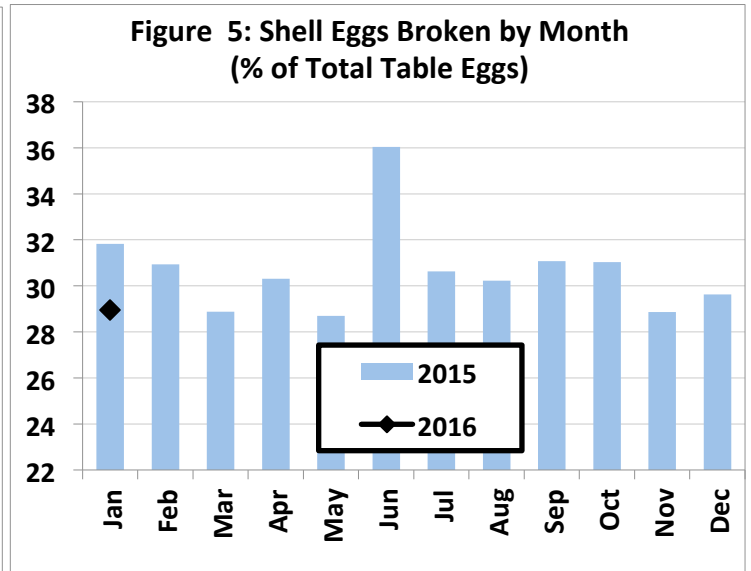
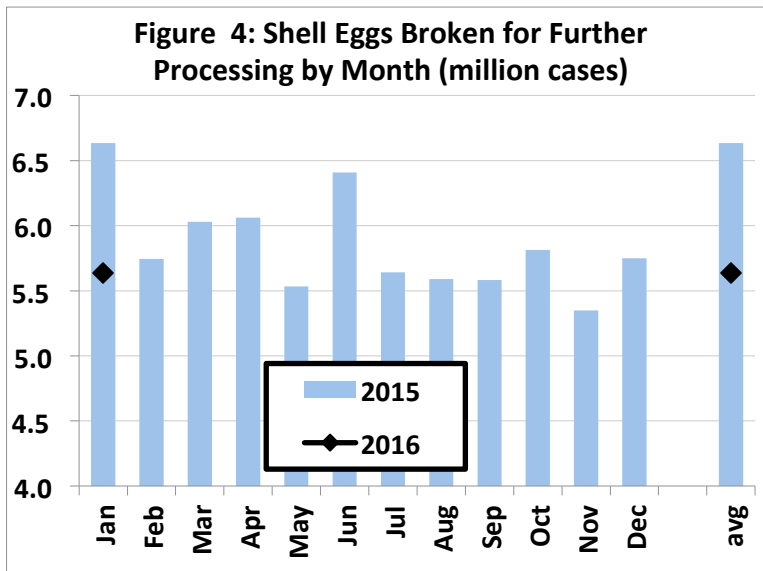
TABLE 4

month	2010	2011	2012	2013	2014	2015	2016	16/15 (%) Change
Jan	5.268	5.668	5.666	5.765	5.865	6.634	5.635	-15.1
Feb	5.013	5.163	5.524	5.374	5.325	5.746		
Mar	5.504	6.008	5.715	5.831	6.086	6.030		
Apr	5.714	5.464	5.634	5.950	6.205	6.061		
May	5.727	5.838	6.057	5.820	6.514	5.533		
Jun	6.206	6.167	5.955	6.118	6.532	6.408		
Jul	5.977	5.988	5.748	6.266	6.618	5.641		
Aug	5.884	6.061	6.523	6.200	6.596	5.589		
Sep	6.582	5.869	6.005	6.040	6.566	5.583		
Oct	5.842	5.805	6.109	6.289	6.731	5.814		
Nov	5.445	5.786	5.577	5.738	6.086	5.350		
Dec	5.891	5.615	5.964	5.745	6.281	5.749		
1 Month Avg.	5.268	5.668	5.666	5.765	5.865	6.634	5.635	-15.1
1 Month Total	5.268	5.668	5.666	5.765	5.865	6.634	5.635	
12 Month Total	69.054	69.431	70.477	71.136	75.405	70.138		

Source: USDA NASS Egg products - monthly

Million Cases Produced
% BROKEN

221.728	228.286	236.092	245.472	228.900	19.467
31.3	30.9	30.1	30.7	30.6	28.9



PER CAPITA EGG CONSUMPTION BY QUARTER

TABLE 5

QUARTER	2009	2010	2011	2012	2013	2014	2015	2016*
1	62.0	61.8	61.3	63.2	64.3	64.7	64.4	64.5
2	61.5	61.9	61.5	62.2	63.4	65.3	61.5	64.0
3	61.4	62.5	62.8	63.3	64.7	66.3	60.4	64.0
4	62.9	63.1	64.3	65.6	66.0	66.7	63.9	65.9
Total	247.7	249.3	249.9	254.3	258.4	263.0	250.1	258.3

Change from previous year (eggs)

1.6	0.6	4.4	4.1	4.6	-12.9	8.2
-----	-----	-----	-----	-----	-------	-----

Source: USDA ERS Livestock and Meat Trade Data.

* Estimates for 2016 (2/2016)

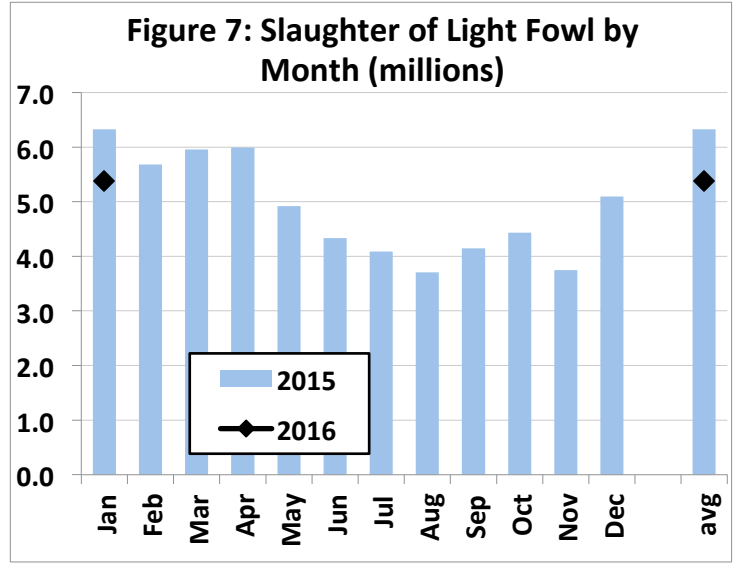
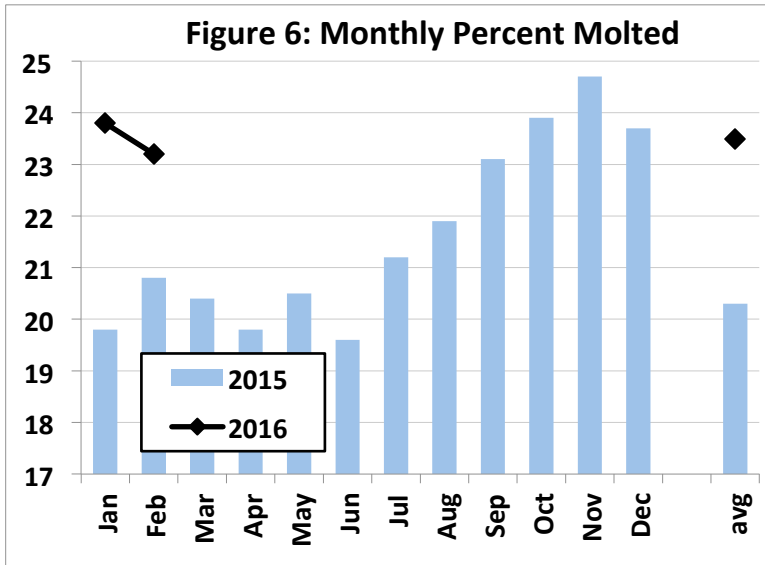


INDUCED MOLT PERCENT - U.S. TOTALS (1ST OF MONTH)

TABLE 6

month	In a Molt			Completed a Molt		Total		
	2015	2016	Change	2015	2016	2015	2016	Change
Jan	2.1	2.5	0.4	17.7	21.3	19.8	23.8	4.0
Feb	3.3	2.6	-0.7	17.5	20.6	20.8	23.2	2.4
Mar	1.9			18.5		20.4		
Apr	2.1			17.7		19.8		
May	3.1			17.4		20.5		
Jun	2.4			17.2		19.6		
Jul	3.0			18.2		21.2		
Aug	2.7			19.2		21.9		
Sep	3.4			19.7		23.1		
Oct	3.4			20.5		23.9		
Nov	3.4			21.3		24.7		
Dec	1.8			21.9		23.7		
2 Month Avg.	2.7	2.6	-0.2	17.6	21.0	20.3	23.5	3.2
12 Month Avg.	2.7			18.9		21.6		

Source: USDA NASS Chickens and Eggs

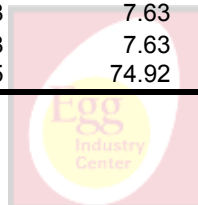


SLAUGHTER OF LIGHT FOWL (MILLIONS)

TABLE 7

month	2010	2011	2012	2013	2014	2015	2016	6 YR (09-14) Month Avg.
Jan	5.80	5.90	6.98	7.63	7.01	6.33	5.38	6.61
Feb	5.22	5.59	5.57	6.20	5.86	5.68		5.68
Mar	6.50	6.56	7.15	6.49	6.15	5.96		6.47
Apr	6.59	5.99	7.95	8.31	6.63	5.99		6.91
May	5.78	6.42	7.91	7.21	7.06	4.92		6.55
Jun	5.88	5.30	6.25	5.40	6.07	4.33		5.54
Jul	5.42	5.00	4.45	5.60	5.32	4.09		4.98
Aug	5.64	5.85	6.00	6.81	6.13	3.71		5.69
Sep	6.12	5.68	5.39	5.50	5.80	4.14		5.44
Oct	5.01	5.56	5.60	5.73	5.57	4.44		5.32
Nov	4.07	4.92	5.12	3.59	3.75	3.75		4.20
Dec	5.63	5.60	6.89	6.45	6.47	5.10		6.02
1 Month Avg.	5.80	5.90	6.98	7.63	7.01	6.33	5.38	6.61
1 Month Total	5.80	5.90	6.98	7.63	7.01	6.33	5.38	6.61
12 Month Total	67.66	68.37	75.25	74.92	71.80	58.42		69.40

Source: USDA NASS Poultry Slaughter



EXPORT OF TABLE EGGS IN THE SHELL IN 2015 (Thousand cases- 30 doz)

TABLE 8

Month \ To	North America	Central America	Caribbean	European Union-28	East Asia	Southeast Asia	Middle East	Total 2015	Total 2014	% of U.S. Production
Jan	300.6	0.0	17.8	9.1	126.0	0.3	8.8	468.2	293.2	2.27
Feb	356.7	0.0	22.5	6.4	92.7	0.0	6.8	491.3	361.9	2.67
Mar	401.9	0.0	9.6	4.9	97.4	0.0	7.2	525.8	351.7	2.55
Apr	426.1	0.0	10.4	1.8	92.4	0.0	3.8	540.0	414.0	2.73
May	258.8	0.0	6.2	0.1	80.4	0.0	2.3	352.5	546.2	1.85
Jun	268.0	0.0	10.0	0.1	40.8	0.0	0.0	322.4	418.7	1.84
Jul	254.2	0.0	8.0	0.3	57.7	0.0	0.0	321.8	584.5	1.78
Aug	351.9	0.0	14.2	0.1	53.6	0.0	0.0	421.7	543.5	2.31
Sep	230.9	0.3	11.5	0.1	57.5	0.0	0.0	305.7	452.4	1.72
Oct	244.6	0.0	10.1	0.0	68.3	0.0	0.0	328.1	612.3	1.77
Nov	206.1	0.0	9.9	0.1	60.1	0.0	0.0	279.3	616.7	1.52
Dec	181.0	0.0	14.1	0.0	62.7	0.0	0.0	262.2	974.5	1.37
12 Mo. Total	3,480.6	0.3	144.2	23.1	889.5	0.3	28.9	4,618.9	6,169.5	2.03
%	75.4	0.0	3.1	0.5	19.3	0.0	0.6			

Source: USDA Foreign Agric. Service from U.S. Dept. of Commerce, U.S. Census Bureau, Foreign Trade Stats

EXPORT OF EGG PRODUCTS IN 2015 (EQUIVALENT: thousand cases- 30 doz)

TABLE 9

Month \ To	North America	Central America	Caribbean	European Union-28	East Asia	Southeast Asia	Middle East	Total 2015	Total 2014	% of U.S. Production
Jan	208.0	8.8	6.5	118.0	132.6	14.0	8.3	517.3	516.4	2.51
Feb	194.9	8.0	5.5	58.0	114.9	11.9	2.9	436.1	518.2	2.37
Mar	184.4	27.0	10.2	96.4	110.9	13.3	13.4	463.9	504.8	2.25
Apr	209.6	9.4	6.1	36.1	124.2	5.1	3.8	402.1	488.7	2.04
May	153.5	2.4	5.3	43.6	119.6	24.9	9.6	385.0	428.7	2.02
Jun	94.5	6.0	2.3	29.1	48.0	11.9	0.7	194.7	519.6	1.11
Jul	88.5	3.9	2.8	21.4	38.9	12.8	14.1	194.3	396.5	1.07
Aug	148.6	2.1	9.3	40.0	42.4	8.5	0.2	254.1	472.9	1.39
Sep	204.8	5.3	2.4	6.0	59.5	15.9	0.0	297.5	514.7	1.67
Oct	88.3	1.1	6.6	30.8	83.4	0.5	0.0	211.7	516.4	1.14
Nov	72.7	0.1	3.4	2.3	66.2	8.4	2.1	157.0	425.4	0.86
Dec	167.6	10.1	4.1	83.8	47.4	10.4	0.4	324.1	582.5	1.69
12 Mo. Total	1,815.5	84.1	64.6	565.5	988.1	137.5	55.6	3,837.9	5,884.7	1.68
%	47.3	2.2	1.7	14.7	25.7	3.6	1.4			

Converted from metric tonnes at a rate of one metric tonne equals approximately 52.4 thirty dozen cases.

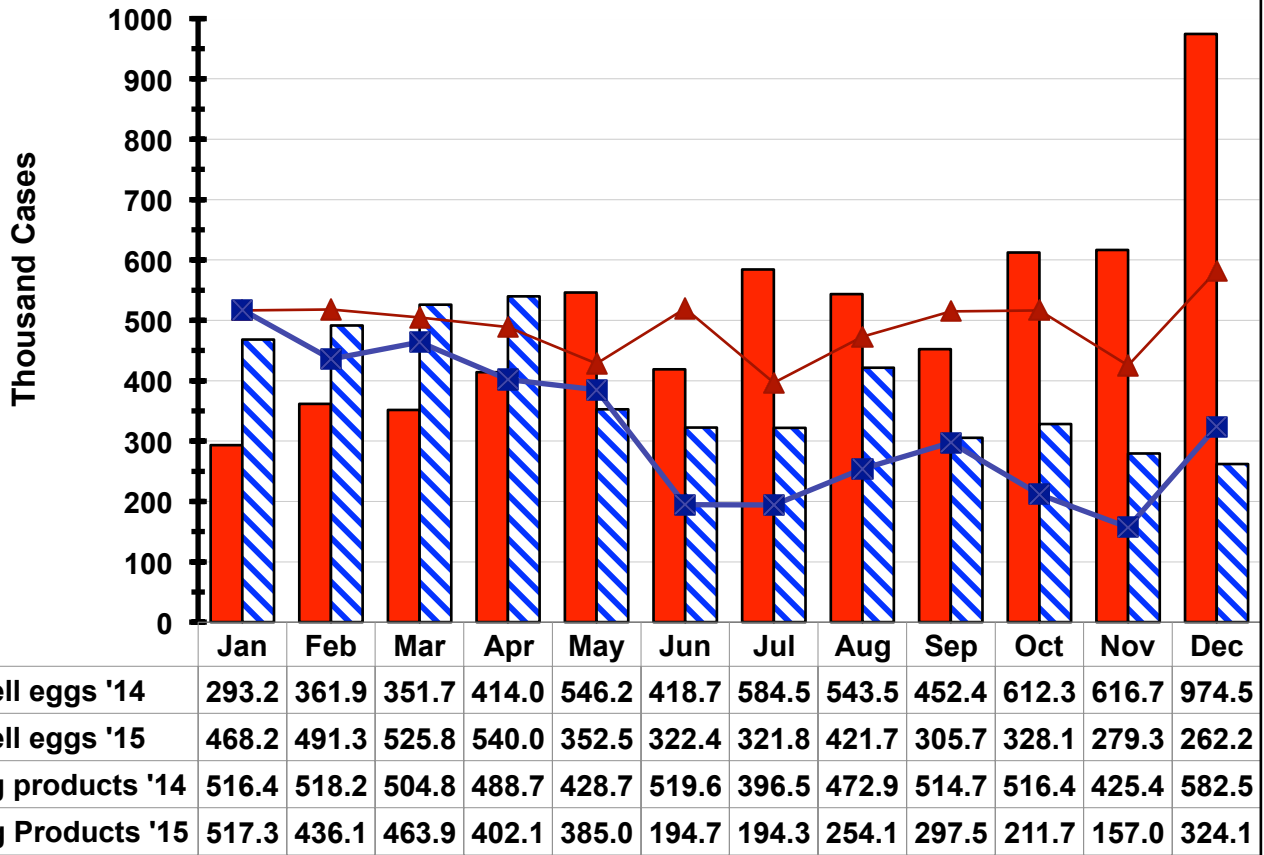
Source: USDA Economic Research Service from U.S. Dept. of Commerce, U.S. Census Bureau, Foreign Trade Stats.

TOTAL EGGS EXPORTED - 2015

TABLE 10

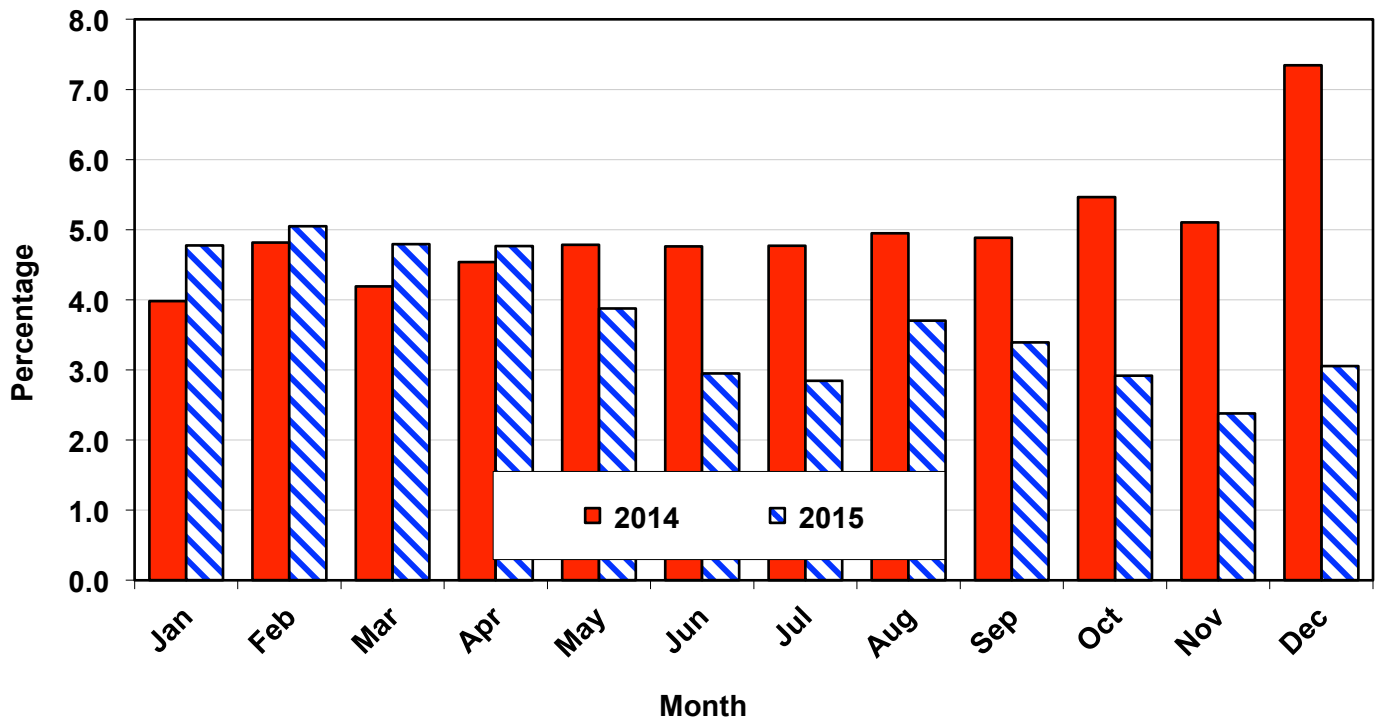
	Table Eggs Produced		Table Eggs Exported		Egg Products Exported		Total Exported	
	(000) Cases		Cases	% of U.S.	Cases	% of U.S.	Cases	% of U.S.
Jan	20,633		468.2	2.27	517.3	2.51	985.4	4.78
Feb	18,375		491.3	2.67	436.1	2.37	927.4	5.05
Mar	20,636		525.8	2.55	463.9	2.25	989.7	4.80
Apr	19,758		540.0	2.73	402.1	2.04	942.1	4.77
May	19,031		352.5	1.85	385.0	2.02	737.5	3.88
Jun	17,519		322.4	1.84	194.7	1.11	517.1	2.95
Jul	18,131		321.8	1.78	194.3	1.07	516.1	2.85
Aug	18,253		421.7	2.31	254.1	1.39	675.8	3.70
Sep	17,772		305.7	1.72	297.5	1.67	603.2	3.39
Oct	18,508		328.1	1.77	211.7	1.14	539.8	2.92
Nov	18,325		279.3	1.52	157.0	0.86	436.3	2.38
Dec	19,200		262.2	1.37	324.1	1.69	586.3	3.05
Total/Av	226,142		4,618.9	2.04	3,837.9	1.70	8,456.7	3.74

Figure 8: U.S. Egg Exports by Month - 2014 and 2015



Note: Information has been converted from metric tonnes at a rate of 42 lbs. per case of liquid egg (edible + inedibles).

**Figure 9: Exported Eggs by Month - 2014 and 2015
(percentage of eggs produced)**



ALL EGGS PRODUCED, INCLUDING HATCHING EGGS, BY REGION (Million) - 2015

TABLE 11

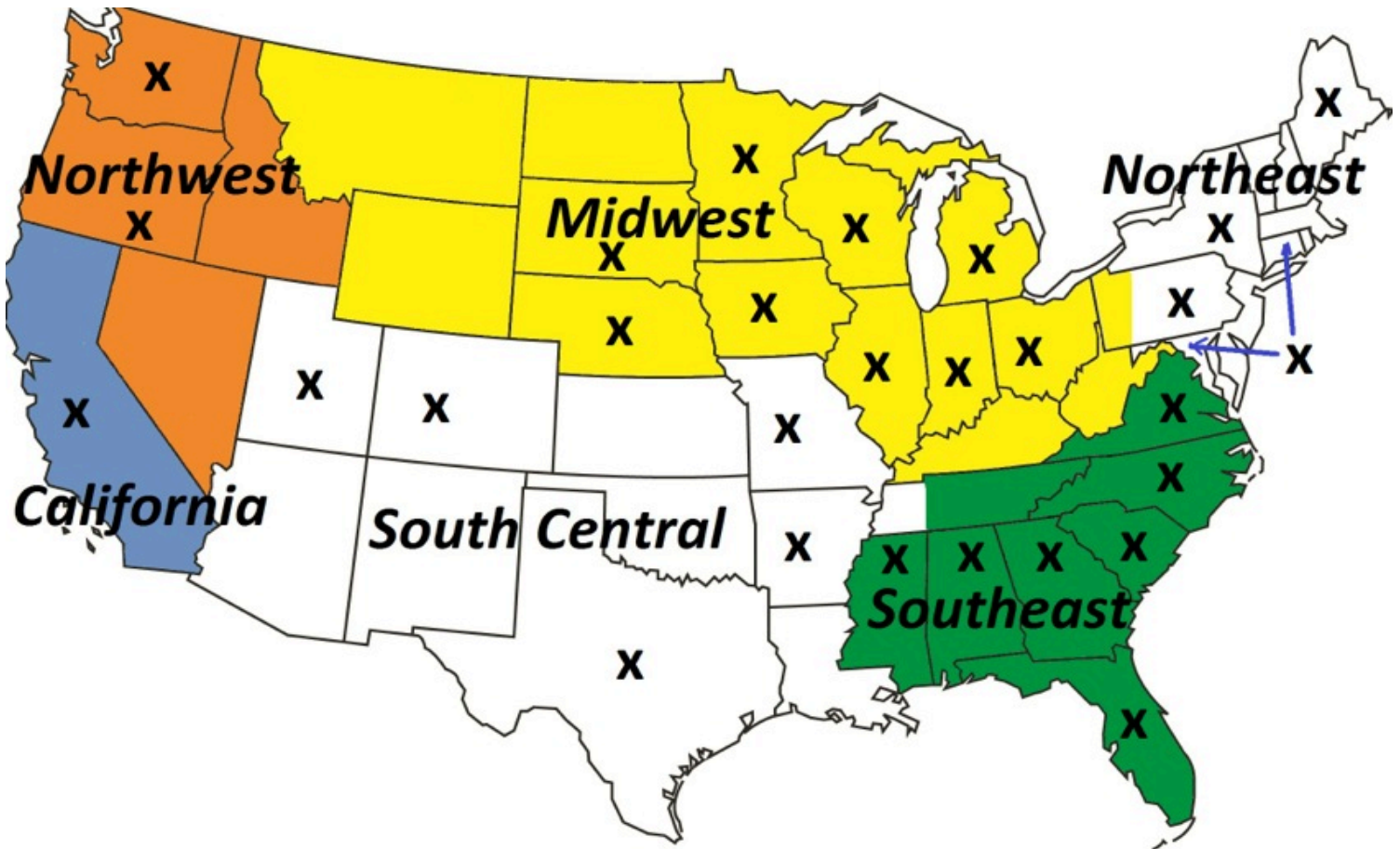
month	Northeast	Southeast	South Central	Midwest	Northwest	California	U.S. Total
Jan	865	1,508	1,209	3,566	227	297	8,145
Feb							
Mar							
Apr							
May							
Jun							
Jul							
Aug							
Sep							
Oct							
Nov							
Dec							
1 Month Avg.	865	1,508	1,209	3,566	227	297	8,145
% of total	10.6	18.5	14.8	43.8	2.8	3.6	

Source: USDA NASS Chickens and Eggs

Note: All States are not represented (see map below)

Note: Year 2015 average for the following States were added: KY, LA, MA, MT, OK, TN, VT and WV

Map of U.S. Regions, as defined by Urner Barry, and the location of information used in this report



Notes

The x's mark the States where there is USDA data available on number of layers, egg production and percent molt.

Northwest is the sum of OR and WA

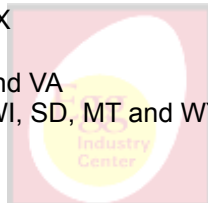
South Central is the sum of AR, UT, CO, MO and TX

Northeast is the sum of CT, MD, ME, NY and PA

Southeast is the sum of AL, FL, GA, MS, NC, SC and VA

Midwest is the sum of IA, IL, IN, MI, MN, NE, OH, WI, SD, MT and WY

California is the state of California only



ALL LAYERS BY REGION, INCLUDING BREEDERS (Million) - 2015

TABLE 12

month	Northeast*	Southeast	South Central	Midwest	Northwest	California	U.S. Total
Jan	34.8	68.8	53.1	152.9	9.3	12.4	349.3
Feb							
Mar							
Apr							
May							
Jun							
Jul							
Aug							
Sep							
Oct							
Nov							
Dec							
1 Month Avg.	34.8	68.8	53.1	152.9	9.3	12.4	349.3
% of total	10.0	19.7	15.2	43.8	2.7	3.5	

Source: USDA NASS Chickens and Eggs

Note: Year 2015 average for the following States were added: KY, LA, MA, MT, OK, TN, VT and WV

TABLE EGG LAYERS IN FLOCKS OF 30,000 AND ABOVE BY REGION (Million) - 2015

TABLE 13

month	Northeast*	Southeast	South Central	Midwest	Northwest	California	U.S. Total
Jan	31.9	33.0	32.1	141.1	9.0	11.9	282.8
Feb							
Mar							
Apr							
May							
Jun							
Jul							
Aug							
Sep							
Oct							
Nov							
Dec							
1 Month Avg.	31.9	33.0	32.1	141.1	9.0	11.9	282.8
% of total	11.3	11.7	11.4	49.9	3.2	4.2	
Table/total layers (%)	91.6%	48.0%	60.6%	92.3%	96.7%	96.0%	81.0%

Source: USDA NASS Chickens and Eggs

* The drop in the Northeast region number is mostly explained by not having a count for CT and ME for the period after March

TOTAL MOLT (in-molt plus post-molt) BY REGION (Simple average of reporting States, %) - 2015

month	Northeast	Southeast	South Central	Midwest	Northwest	California	Simple avg. of 5 regions
Jan	4.0	21.6	24.4	19.5	21.3	20.0	18.5
Feb	3.5	19.9	22.0	18.8	23.3	35.0	20.4
Mar							
Apr							
May							
Jun							
Jul							
Aug							
Sep							
Oct							
Nov							
Dec							
2 Month Avg.	3.8	20.8	23.2	19.1	22.3	27.5	19.4
year 2015 avg.	3.1	21.2	23.2	20.0	23.4	30.9	19.0

Source: USDA NASS Chickens and Eggs

Note: average molt is estimated as the simple average of the reported States

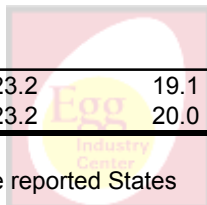
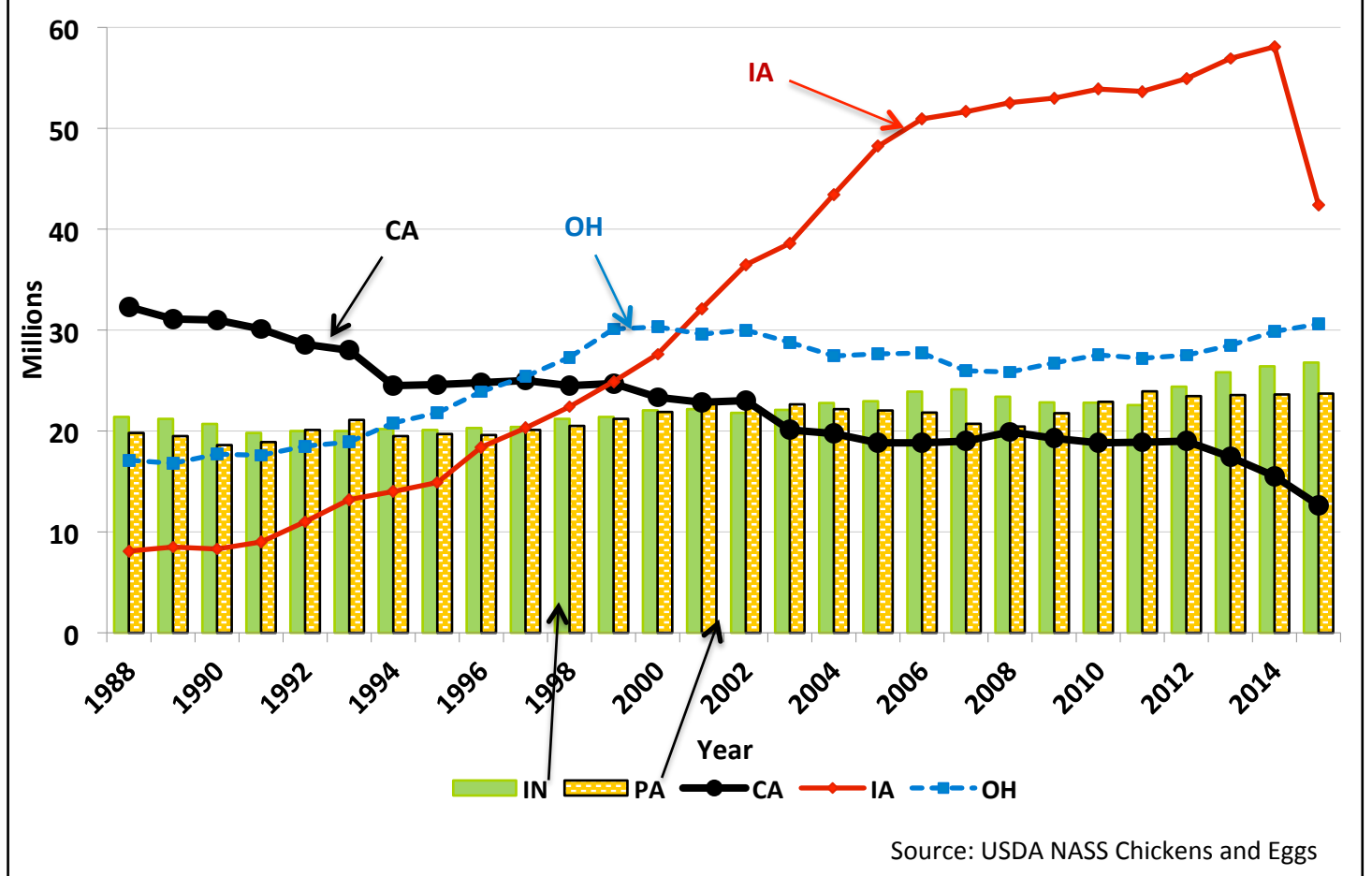


TABLE EGG LAYERS IN LEADING STATES - (LAYERS IN 30,000+ HEN FLOCKS) - 2016

TABLE 15

month	IA	OH	IN	PA	CA	TX	U.S.
Dec-2015	36.85	31.99	29.53	23.86	11.82	16.37	280.21
Jan-2016	39.13	32.01	29.07	23.92	11.87	16.55	282.79
Feb-2016							
Mar-2016							
Apr-2016							
May-2016							
Jun-2016							
Jul-2016							
Aug-2016							
Sep-2016							
Oct-2016							
Nov-2016							
Dec-2016							
1 Month Avg.	39.13	32.01	29.07	23.92	11.87	16.55	282.79
Source: USDA NASS Chickens and Eggs	% of all U.S. table egg layers						96.7

Figure 10: Leading States' Table Egg Layers in Flocks of 30,000 and Above (1988-2015)



PROJECTED U.S. EGG-TYPE HATCHERY SUPPLY FLOCK (Millions)

TABLE 16

month	2010	2011	2012	2013	2014	2015	2016
Jan	2.730	3.087	2.706	2.791	2.436	2.608	2.797
Feb	2.716	3.123	2.659	2.830	2.515	2.535	2.797
Mar	2.745	3.108	2.653	2.786	2.503	2.553	2.857
Apr	2.785	3.039	2.703	2.786	2.468	2.610	2.958
May	2.828	2.998	2.672	2.649	2.555	2.619	2.937
Jun	2.910	2.996	2.657	2.745	2.476	2.664	2.947
Jul	2.999	2.883	2.672	2.579	2.540	2.682	3.081
Aug	3.010	2.848	2.731	2.613	2.536	2.689	
Sep	3.019	2.877	2.732	2.630	2.472	2.605	
Oct	3.023	2.779	2.819	2.588	2.530	2.718	
Nov	2.998	2.755	2.778	2.515	2.497	2.917	
Dec	3.099	2.713	2.791	2.537	2.439	2.892	
7 month avg.	2.816	3.033	2.674	2.738	2.499	2.610	2.911
12 month avg.	2.905	2.934	2.714	2.671	2.497	2.674	

Source: USDA NASS Chickens and Eggs

Note: The hatchery supply flock estimates are made by using 7 to 18 months prior hatch minus 9% mortality

PULLETS TO BE HOUSED BASED UPON U.S. HATCH 5 MONTH AGO (Millions)

TABLE 17

(47.5% of CHICKS PLACED multiplied by a 95% LIVABILITY FACTOR)

month	2011	2012	2013	2014	2015	2016	2011 to '15 month avg.
Jan	16.7	18.7	17.3	17.5	18.0	21.1	17.6
Feb	18.1	18.0	17.3	19.0	19.7	22.1	18.4
Mar	18.6	17.0	17.1	19.2	20.1	22.5	18.4
Apr	17.5	16.9	16.5	18.9	16.5	20.8	17.3
May	17.0	17.6	18.5	18.6	18.2	21.3	18.0
Jun	18.3	18.6	19.8	20.1	18.7	21.5	19.1
Jul	16.9	18.3	19.1	18.5	18.2		18.2
Aug	19.7	19.4	19.7	20.0	21.4		20.0
Sep	19.4	19.5	20.8	20.6	21.2		20.3
Oct	19.4	20.1	22.6	22.2	21.5		21.2
Nov	17.6	17.5	19.1	19.9	21.1		19.0
Dec	16.7	16.2	18.0	19.1	19.2		17.8
6 month avg.	17.7	17.8	17.7	18.9	18.5	21.5	18.1
Annual Avg.	18.0	18.2	18.8	19.5	19.5		18.8
Total	215.9	217.9	225.6	233.4	233.9		225.3

Source: USDA NASS Chickens and Eggs

% Change to date

16.29

Note: The number of pullets to be housed was reduced by 6 million based on the number reported as lost to avian influenza. We assumed the reduction as evenly spread during the period between May and September 2015 (assuming that the ages of affected birds was evenly distributed).



PROJECTED U.S. TABLE EGG FLOCK LESS THAN 72 WEEKS OF AGE (Millions)

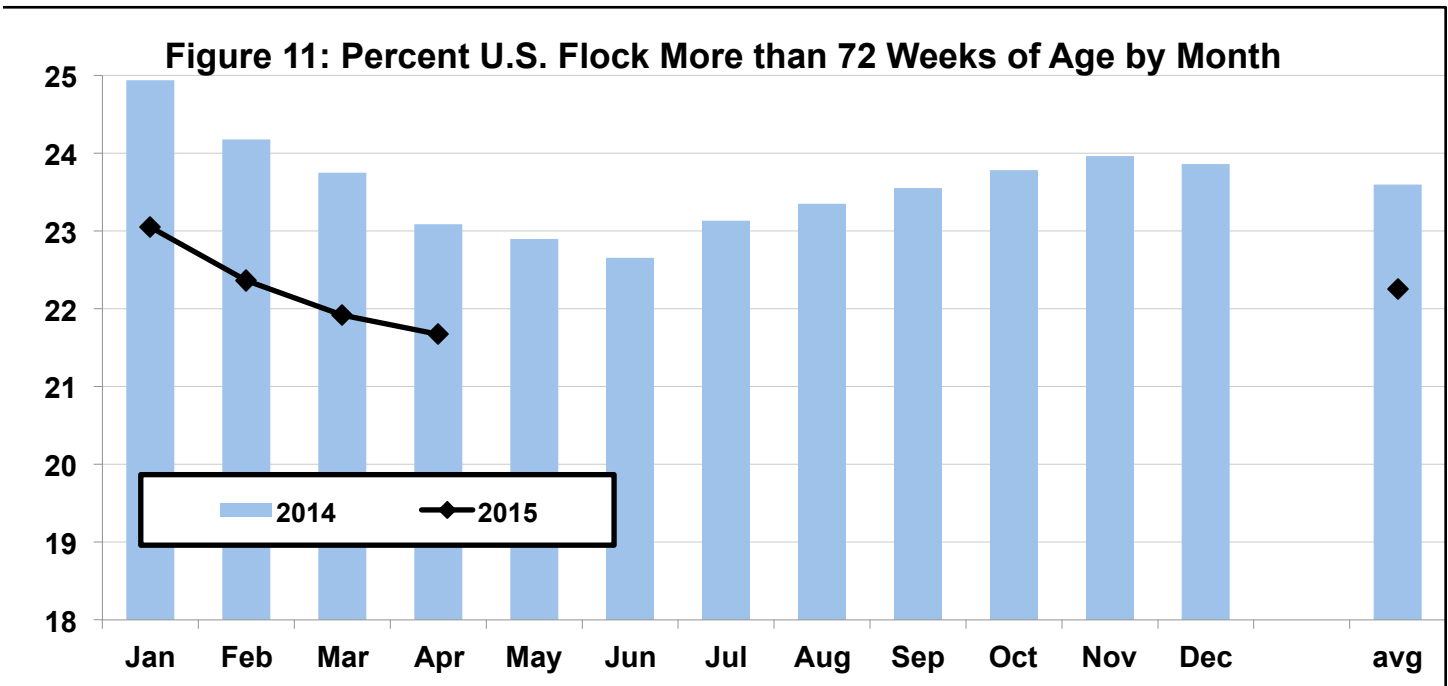
TABLE 18

month	Number				% of National Flock over 72 wks.		
	2012	2013	2014	2015	2013	2014	2015
Jan	219.7	220.1	227.7	235.8	26.3	24.9	23.1
Feb	219.6	219.4	229.5	236.5	26.8	24.2	22.4
Mar	217.9	219.6	231.6	237.4	26.9	23.7	21.9
Apr	217.3	219.1	234.0	235.0	26.5	23.1	21.7
May	217.9	220.0	234.1	*	25.8	22.9	
Jun	218.2	221.1	234.4	*	25.5	22.7	
Jul	219.6	221.9	233.8	*	25.4	23.1	
Aug	219.4	222.1	234.1	*	25.8	23.4	
Sep	219.5	223.4	234.0	*	25.6	23.6	
Oct	220.2	226.0	233.5	*	25.0	23.8	
Nov	220.2	227.5	234.3	*	25.3	24.0	
Dec	219.7	229.3	235.4	*	24.9	23.9	
4 month avg.	218.6	221.8	232.8	237.8			
4 month avg.					26.6	24.0	22.3
12 month avg.	219.1	222.5	233.0		25.8	23.6	

Source: Egg Industry Center based on USDA NASS Chickens and Eggs data

Note: The number of layers younger than 72 weeks of age are estimated as the sum of the Egg-Type Chicks Hatched between 5 and 17 months before adjusted by a 9% loss

* Special note: A special adjustment to this calculation will be needed as a result of the avian influenza outbreak, but it will depend on some assumptions about the ages of the layers affected.



FLOCK SIZE PROJECTION

The U.S. flock size is projected for the current year and the following year for each month. Projections start with the first of the month official USDA count and are then adjusted monthly. Adjustments are made considering the most recent:

1. Hatch data (projected 5-months into the future with mortality). Subsequent hatches are based upon 6-year percentage trends for each month.
2. USDA slaughter data and estimates based upon 6-year trends for subsequent months.
3. Missing estimates are included for on-farm slaughter, died, exports, etc. This data is expressed as a percentage of each month's beginning count based upon recent history.

TABLE 19 _

First of the Month Projection Estimates of U.S. Table Egg Layers (millions)

Actual	Actual	Projected	Projected	Projected	Projected	Projected	Projected	Projected	Projected	Projected	Projected
2016	2016	2016	2016	2016	2016	2016	2016	2016	2016	2016	2016
Jan	Feb	Mar	Apr	May	Jun	Jul	Aug	Sep	Oct	Nov	Dec
291.1	293.5	297.8	302.6	303.3	305.1	306.7	307.4	309.5	310.2	312.6	315.9
Project. Year end:						Dec, 2016 - 315.1					

The avian influenza outbreak created a large reduction on the U.S. flock; therefore, we expect our flock projections to be a lot less accurate than normal until the situation stabilizes. To be able to approximate a projection we assumed that:

- the age of the 6 million pullets lost to AI were evenly distributed
- the percent of the flock culled (slaughter, died or missing) by month stays the same
- producers find a place where to house the pullets grown (based on the 5 month before hatch)

U.S. FLOCK SIZE PROJECTED VS. ACTUAL (1st OF THE MONTH) - 2016 (Millions)

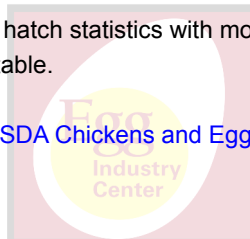
TABLE 20 _

Projected on Jan. 31, 2016 (EIC). Not changed during the year.

Month	Beginning count		Replacements		Slaughter	
	Projected	Actual	Projected	Actual	Projected	Actual
Jan	288.1	291.1	21.1	21.1	6.4	5.4
Feb	290.8	293.5	22.1	22.1	5.5	
Mar	295.2		22.5	22.5	6.4	
Apr	300.1		20.8	20.8	6.9	
May	300.9		22.2	21.3	6.8	
Jun	302.9		22.0	21.5	6.4	
Jul	302.6		18.6		5.7	
Aug	303.3		20.9		6.2	
Sep	305.3		20.8		5.8	
Oct	306.0		21.1		5.8	
Nov	308.3		19.8		4.9	
Dec	311.5		18.1		6.3	
Current avg	289.4	292.3	21.8	21.5	6.4	5.4

1. Note: Projections are based upon USDA data and are updated monthly.
2. Please note: The above projections are updated monthly. The current projections are shown in Table 19.
3. Projected = Egg Industry Center
4. Actual = Chickens and Eggs Report - USDA NASS
5. USDA replacements are projected ahead from previous hatch statistics with mortality and placement adjustments.
6. Mortality and missing birds are not shown in the above table.

NOTE: the projections in table 20 were made before the USDA Chickens and Eggs Report adjustment.



2016 United States Flock Size Projections

Table 22

For February 2016

USDA preliminary
Actual count

Estimated number of U.S. table egg layers (million) on the 1st of each month

Estimated For Month	Estimated: December 2015	Month Number of Layers Projected for 2016/2017											
		2015 Jan	Feb	Mar	Apr	May	June	July	Aug	Sept	Oct	Nov	Dec
Jan-16	284.8	288.1	291.1										
Feb-16	287.7	290.8	293.5										
Mar-16	292.3	295.2	297.8										
Apr-16	297.4	300.1	302.6										
May-16	298.4	300.9	303.3										
Jun-16	301.3	302.9	305.1										
Jul-16	301.2	302.6	306.7										
Aug-16	301.9	303.3	307.4										
Sep-16	304.0	305.3	309.5										
Oct-16	304.8	306.0	310.2										
Nov-16	307.2	308.3	312.6										
Dec-16	310.5	311.5	315.9										
Jan-17		310.6	315.1										
Feb-17			314.2										
Mar-17													
Apr-17													
May-17													
Jun-17													
Jul-17													
Aug-17													
Sep-17													
Oct-17													
Nov-17													
Dec-17													

THIS IS A NEW PAGE TO VISUALIZE CHANGES IN FLOCK PROJECTIONS AS THE YEAR EVOLVES

* Note: USDA Chickens and Eggs Report adjusted the number of table egg layers up between the January and February reports



Figure 12: U.S. Monthly Table-Egg Layers (2006-2016)

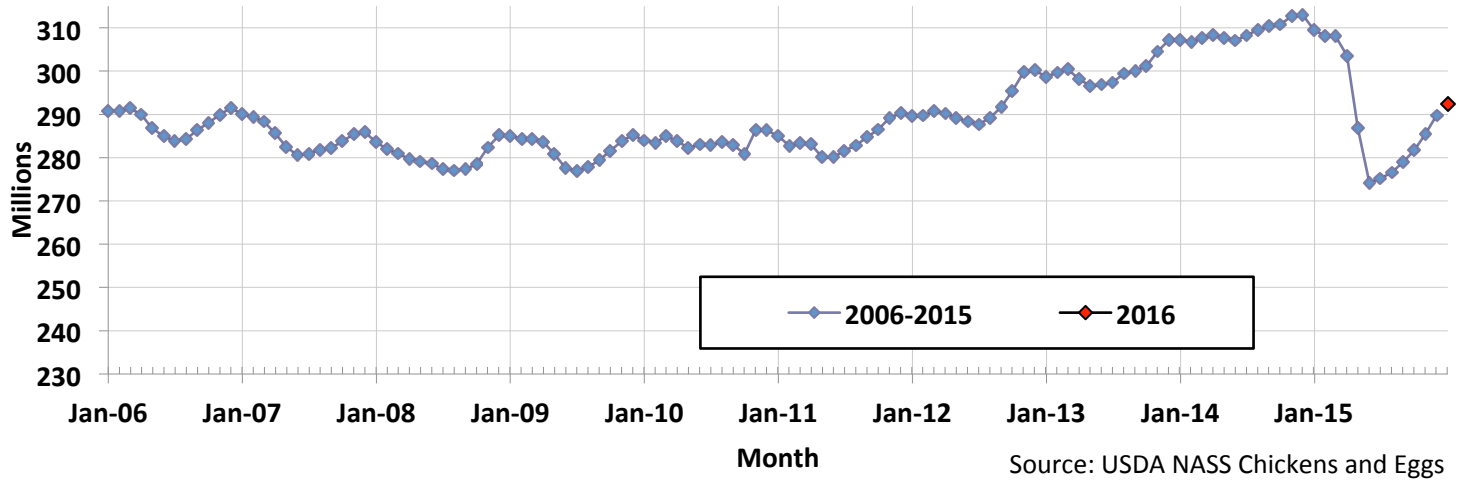


Figure 13: U.S. Table Eggs per Hundred Hens per Day by Month (2006-2016)

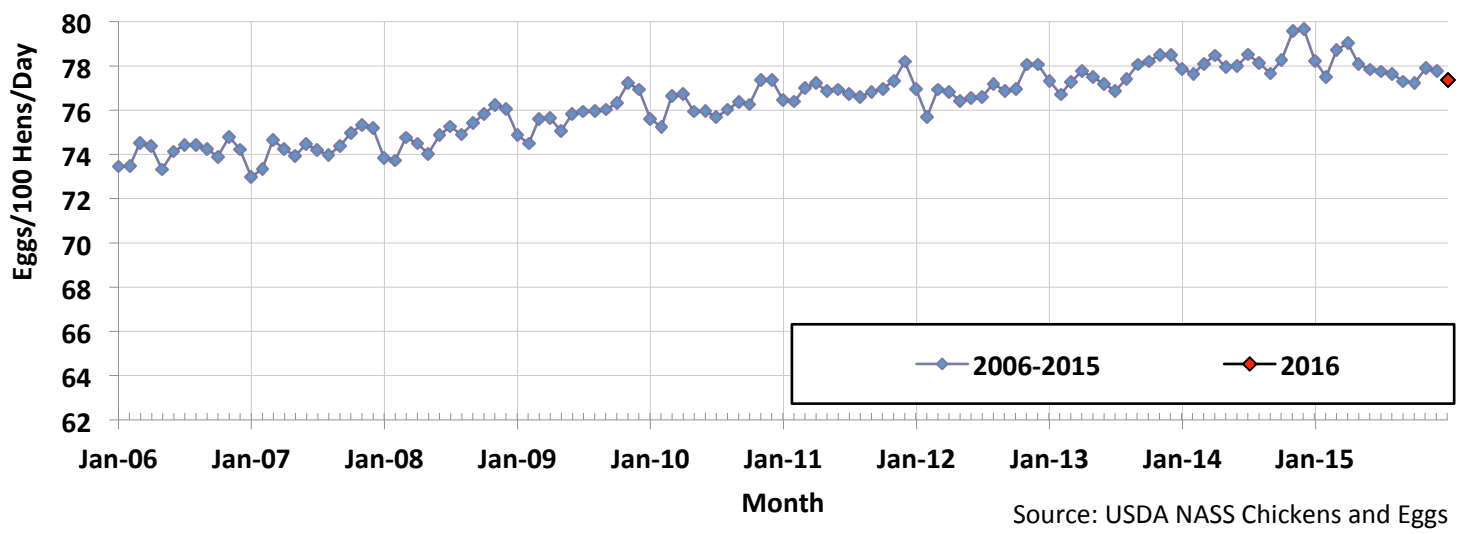


Figure 14: Monthly Percent of U.S. Flock Molted (2006-2016)

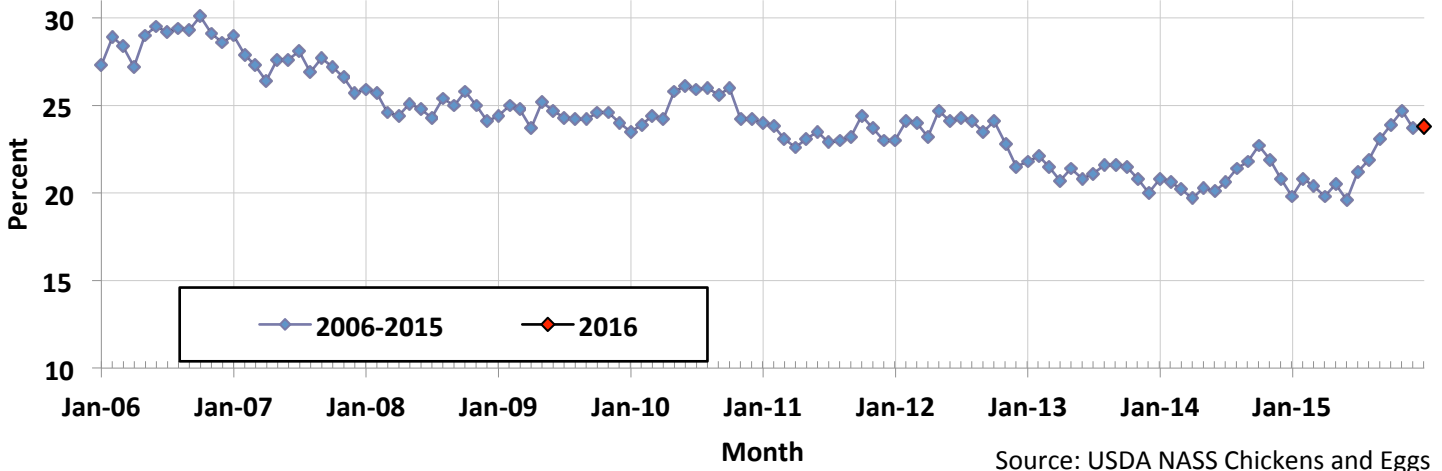
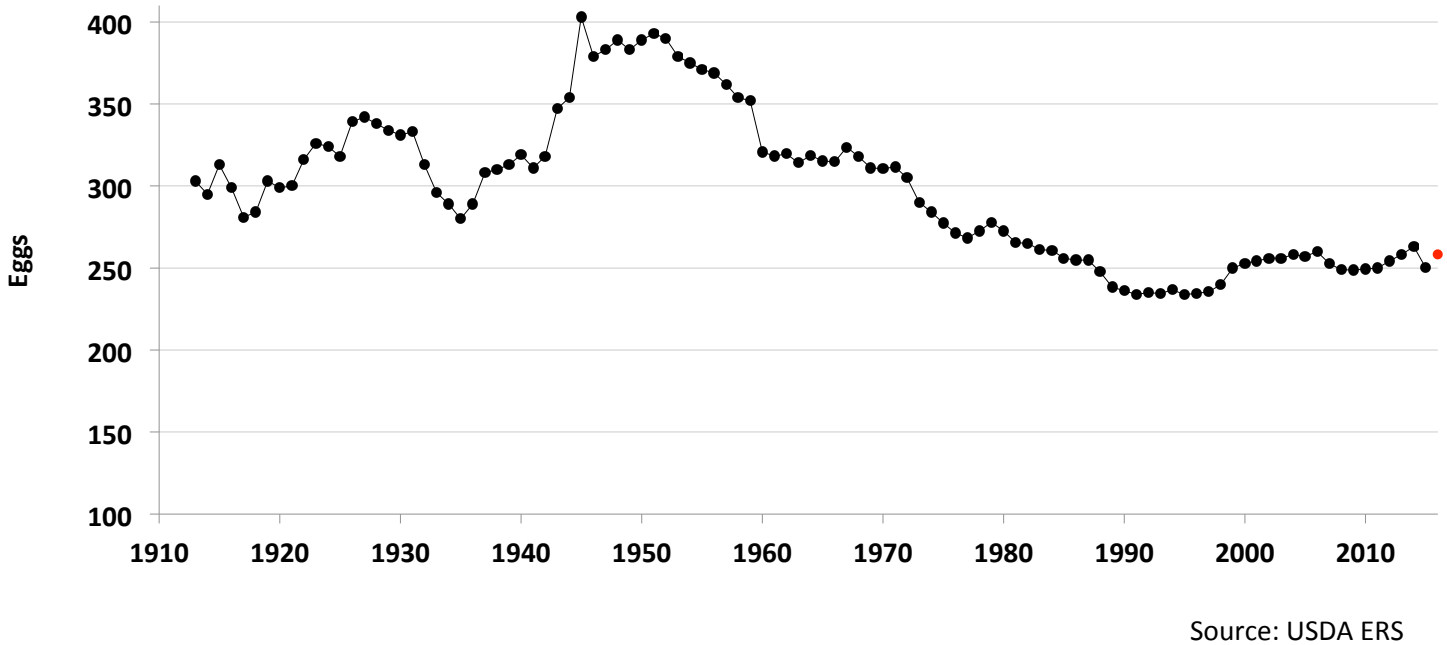


Figure 15: U.S. Per Capita Egg Consumption by Year (1913-2016)



SUMMARY TO DATE

Table 23

		2015	2016	% Change
HATCH of EGG-TYPE STRAIGHT RUN (THOUSANDS) (U.S.) (Total)	Jan to Jan	44,174	47,576	7.7
TABLE-EGG LAYERS (MILLIONS) (U.S.) (Avg.)	Jan to Jan	309.5	292.3	-5.5
TABLE EGGS (MILLIONS/MONTH) (U.S.) (Avg.)	Jan to Jan	7,504	7,008	-6.6
RATE OF LAY (%) (Avg.)	Jan to Jan	75.8	75.8	0.0
U.S. TABLE EGG AVG. CASES/WEEK (THOUSANDS)	Jan to Jan	1,694	1,582	-6.6
AVG MONTHLY CASES OF EGGS BROKEN (MILLION) (U.S.)	Jan to Jan	6.634	5.635	-15.1
		2013	2014	Difference
PERCENT OF U.S. FLOCK IN or POST MOLT (Avg.)	Jan to Feb	20.3	23.5	3.2
AVVERAGE PULLETS ADDED/MONTH (MILLIONS) (U.S.)	Jan to May	18.5	21.5	3.0

Note: U.S. cost of production and egg prices are published in another Egg Industry Center report. Contact Maro Ibarburu at maro@iastate.edu to be placed on the mailing list to receive monthly copies of these reports.

Webpages of some of the sources of information,

Access these sites by clicking on the blue addresses below:

- University of California Poultry Page <http://animalscience.ucdavis.edu/avian/>
- USDA NASS Chickens and Eggs <http://usda.mannlib.cornell.edu/MannUsda/viewDocumentInfo.do?documentID=1028>
- USDA NASS Poultry Slaughter <http://usda.mannlib.cornell.edu/MannUsda/viewDocumentInfo.do?documentID=1131>
- USDA NASS Egg Products <http://usda.mannlib.cornell.edu/MannUsda/viewDocumentInfo.do?documentID=1057>
- USDA ERS Livestock and Meat Trade Data. <http://www.ers.usda.gov/data/MeatTrade/BroilerTurkeyMonthly.htm>
- USDA FAS <http://www.fas.usda.gov/gats/ExpressQuery1.aspx>
- USDA NASS Cold Storage <http://usda.mannlib.cornell.edu/MannUsda/viewDocumentInfo.do?documentID=1034>
- USDA AMS Poultry Market News and Analysis <http://marketnews.usda.gov/portal/py>

Maro Ibarburu, EIC Business Analyst
 Iowa State University, Ames, IA
 Phone (515) 294-8132
 E-mail: maro@iastate.edu

