

# U.S. Flock Trends and Projections

OCTOBER 8, 2015



*Compiled by*  
**Maro Ibarburu**

*Sponsored in part by:*



American Egg Board

*The Egg Industry Center Market Reports & Industry Analysis are compiled in the memory of their creator, Don D. Bell, Poultry Extension Specialist Emeritus - UC Davis.*

## U.S. EGG INDUSTRY STATISTICAL REPORT SUMMARY

\* The August hatch (straight-run chicks) was 17.7% higher than in 2014. This projects forward to a 21.1 million pullet placement for January of 2016 which is 3.1 million larger than January of 2015 placement (18.0).

\* Current (August average, 2015) U.S. table egg layer number (272.2 million) is 33.2 million smaller than last year's number at this time (305.4 million), and up 1.4 million compared to last month (270.8 million).

\* In August, Iowa led the nation with 32.6 million laying hens compared to 30.8 million in Ohio, 26.0 million in Indiana, and 23.8 million in Pennsylvania. California (with 12.9 million layers) lost it's 5th position to Texas with 15.6 million layers.

\* The August U.S. rate of lay was estimated to be 77.6% which is 0.5% lower than the August 2014 level (78.1%). The total number of table eggs produced in August 2015 was 11.5% lower than the August 2014 production.

\* The August 2015 number of eggs exported was 34% lower than last year (August 2014) and 31% higher than last month (July 2015). The August exports represented 3.72% of the number of eggs produced.

\* Shell eggs broken for products in August 2015 totaled 5.589 million cases, 15.3% less than in August 2014 (6.596 million cases).

\* The egg-type hatchery supply flock is projected to be 9% higher in Jan-Feb 2016 than in Jan-Feb 2015 (table 16).

### Monthly Highlights (Compared to August a year ago) (% change) - U.S.

	2014	2015	% Change
Hatch - Egg-Type Straight Run (thousands) (U.S.)	39,803	46,863	17.7
Table Egg Layers (millions) (U.S.)	305.4	272.2	-10.9
Rate of lay (percent)	78.1	77.6	-0.5
Molting (September 1, 2015) (percent in + out of a molt)	21.8	23.2	1.4

### Year-end layers (millions) - U.S.

Year	2005	2006	2007	2008	2009	2010	2011	2012	2013	2014	2015
Million	290.9	290.6	284.7	285.6	285.2	286.8	290.1	294.6	300.4	304.8	288.5*

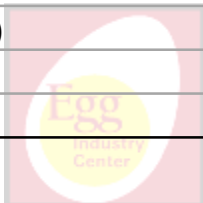
\* estimated value



**TABLE OF CONTENTS**

<b>Table Name</b>	<b>Table #</b>	<b>Page</b>	<b>Sheet or Section</b>
Egg Type: U.S. Eggs In Incubators and Straight Run Hatch	1	3	U.S. Volume
Average U.S. Layers and Table Egg Layers	2	3	U.S. Volume
U.S. All Eggs, Table Eggs and Rate of Lay	3	4	U.S. Volume
Shell Eggs Broken Under Federal Inspection	4	5	U.S. Volume
Per Capita Egg Consumption by Quarter	5	5	U.S. Volume
Induced Molt Percent - U.S. Totals (1st of Month)	6	6	U.S. Volume
Slaughter of Light Fowl	7	6	U.S. Volume
Export of Table Eggs In the Shell In 2015	8	7	Trade
Export of Egg Products In 2015	9	7	Trade
Total Eggs Exported - 2015	10	7	Trade
All Eggs Produced, Including Hatching Eggs, by Region - 2015	11	9	Regional
All Layers by Region, Including Breeders - 2015	12	10	Regional
Table Egg Layers In Flocks 30,000 and Above by Region - 2015	13	10	Regional
Total Molt by Region (Simple Average of Reporting States, %) - 2015	14	10	Regional
Table Egg Layers In Flocks 30,000 and Above In Leading States (Average) - 2015	15	11	Regional
Projected U.S. Egg-Type Hatchery Supply Flock - 2015	16	12	Projections
U.S. Pullets to be Housed Based Upon Hatch 5 Month Ago	17	12	Projections
Projected U.S. Table Egg Flock Less Than 72 Weeks of Age	18	13	Projections
First of the Month Projection Estimates of U.S. Table Egg Layers (millions)	19	14	Projections
Projected vs. Actual First of the Month (U.S. Flock Size) - 2015	20	14	Projections
2015 Bird Flow by Month	21	15	Projected Flock
2015 United States Flock Size Projections	22	16	Previous Projections
Summary to Date	23	19	Final

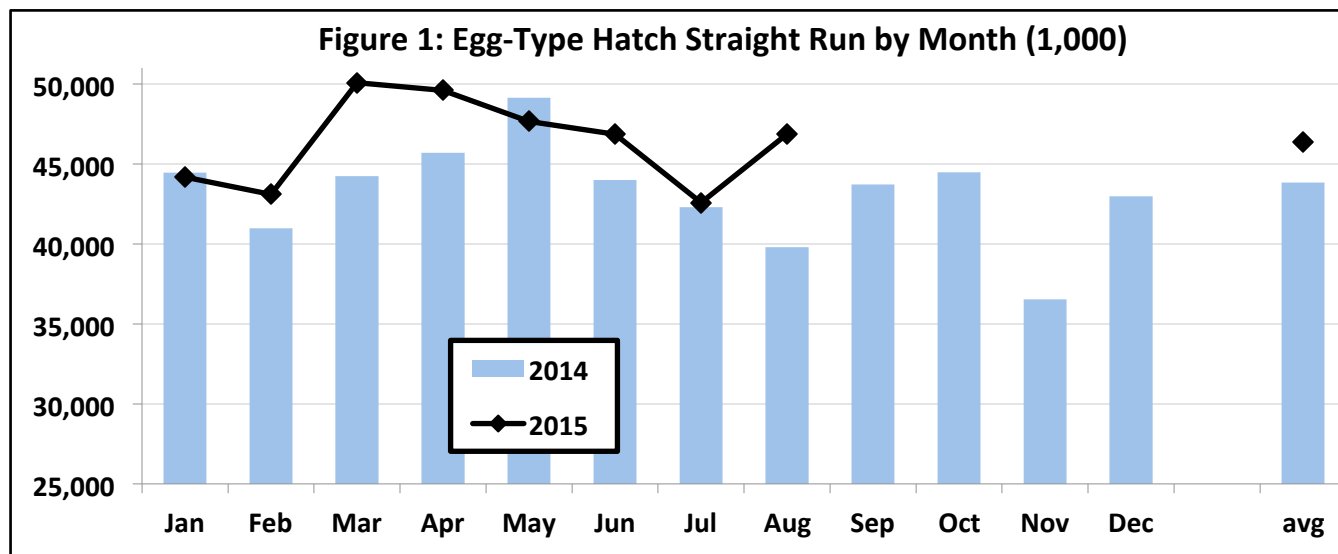
<b>Figure Name</b>	<b>Figure #</b>	<b>Page</b>	<b>Sheet or Section</b>
Egg-Type Hatch Straight Run by Month (1,000)	1	3	U.S. Volume
Table Egg Layers by Month (Millions)	2	4	U.S. Volume
Rate of Lay (Percent)	3	4	U.S. Volume
Shell Eggs Broken for Further Processing by Month (Million cases)	4	5	U.S. Volume
Shell Eggs Broken by Month (Percent of Total Table Eggs)	5	5	U.S. Volume
Monthly Percent Molted	6	6	U.S. Volume
Slaughter of Light Fowl by Month (Millions)	7	6	U.S. Volume
U.S. Egg Exports by Month - 2014 and 2015	8	8	Trade
U.S. Exported Eggs by Month - 2014 and 2015	9	8	Trade
Leading States' Table Egg Layers In Flocks of 30,000 and Above (1988-2014)	10	11	Regional
Percent of U.S. Flock More Than 72 Weeks of Age by Month	11	13	Projections
U.S. Monthly Table-Egg Layers (2002-2015)	12	17	Trends
U.S. Table Eggs per Hen per Day by Month (2002-2015)	13	17	Trends
Monthly Percent of U.S. Flock Molted (2002-2015)	14	17	Trends
U.S. Per Capita Egg Consumption by Year (1913-2015)	15	18	Trends



**EGG TYPE: EGGS IN INCUBATORS (on the 1st of the month) and STRAIGHT RUN HATCH (U.S.)** **TABLE 1**

EGG-TYPE Eggs in Incubators (thousands)				EGG-TYPE Straight Run Hatch (thousands)			
month	2014	2015	Change (%)	month	2014	2015	Change %
Jan	41,220	42,237	2.5	Jan	44,458	44,174	-0.6
Feb	41,857	40,464	-3.3	Feb	40,986	43,091	5.1
Mar	39,409	46,064	16.9	Mar	44,233	50,077	13.2
Apr	43,197	49,281	14.1	Apr	45,703	49,595	8.5
May	47,407	47,700	0.6	May	49,146	47,652	-3.0
Jun	42,738	47,478	11.1	Jun	44,006	46,868	6.5
Jul	41,041	43,796	6.7	Jul	42,297	42,582	0.7
Aug	39,782	44,434	11.7	Aug	39,803	46,863	17.7
Sep	41,734	47,242	13.2	Sep	43,722		
Oct	43,275			Oct	44,468		
Nov	38,051			Nov	36,544		
Dec	42,006			Dec	42,980		
<b>9 Month Avg.</b>	<b>42,043</b>	<b>45,411</b>	<b>8.0</b>	<b>8 Month Avg.</b>	<b>43,829</b>	<b>46,363</b>	<b>5.8</b>
<b>9 Month Total</b>	<b>378,385</b>	<b>408,696</b>		<b>8 Month Total</b>	<b>350,632</b>	<b>370,902</b>	
<b>12 Month Total</b>	<b>501,717</b>			<b>12 Month Total</b>	<b>518,346</b>		

Source: USDA NASS Chickens and Eggs

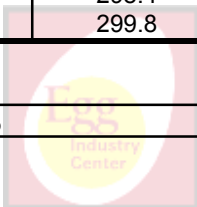


**AVERAGE U.S. LAYERS AND TABLE EGG LAYERS 2014/2015 (MILLIONS)** **TABLE 2**

month	All Layers			Table Egg Layers			
	2014	2015	Change (%)	2013	2014	2015	Change (%)
Jan	359.6	363.7	1.2	298.7	303.4	306.5	1.0
Feb	359.0	362.3	0.9	299.7	302.7	304.7	0.7
Mar	360.0	362.5	0.7	300.4	303.7	304.1	0.1
Apr	360.8	358.4	-0.7	298.1	304.3	300.0	-1.4
May	360.4	341.6	-5.2	296.6	303.6	283.3	-6.7
Jun	359.7	328.7	-8.6	296.9	303.0	269.9	-10.9
Jul	360.8	329.0	-8.8	297.4	304.2	270.8	-11.0
Aug	361.7	330.1	-8.7	299.4	305.4	272.2	-10.9
Sep	361.8			300.1	306.0		
Oct	362.0			301.1	306.3		
Nov	364.0			304.5	308.1		
Dec	365.7			305.2	309.1		
<b>8 Month Avg.</b>	<b>360.2</b>	<b>347.1</b>	<b>-3.7</b>	<b>298.4</b>	<b>303.8</b>	<b>288.9</b>	<b>-4.9</b>
<b>Annual Avg.</b>	<b>361.3</b>			<b>299.8</b>	<b>305.0</b>		

Source: USDA NASS Chickens and Eggs

**Table egg layers as a % of all layers to date (2015): 83.3%**

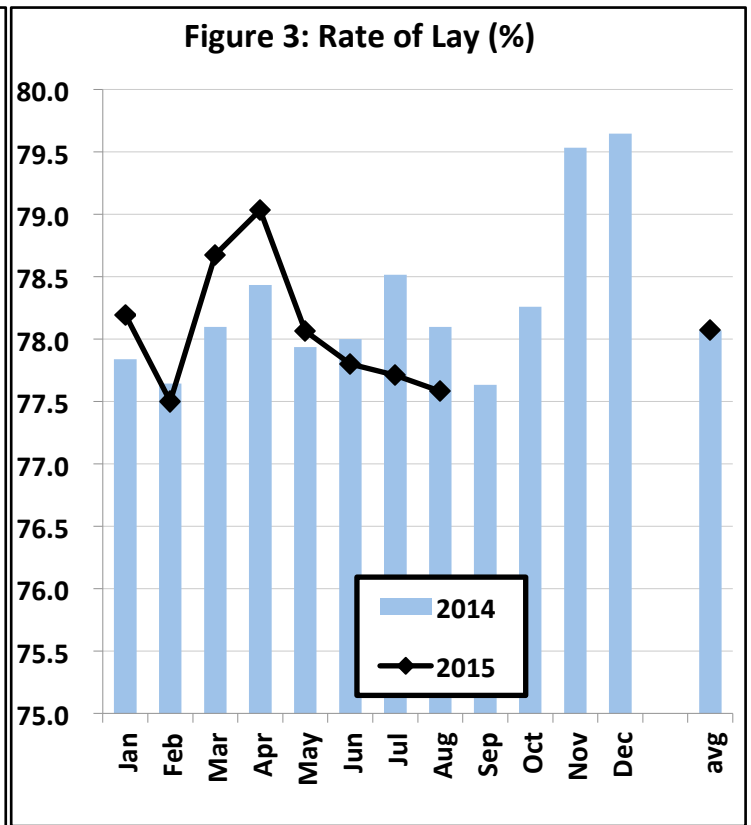
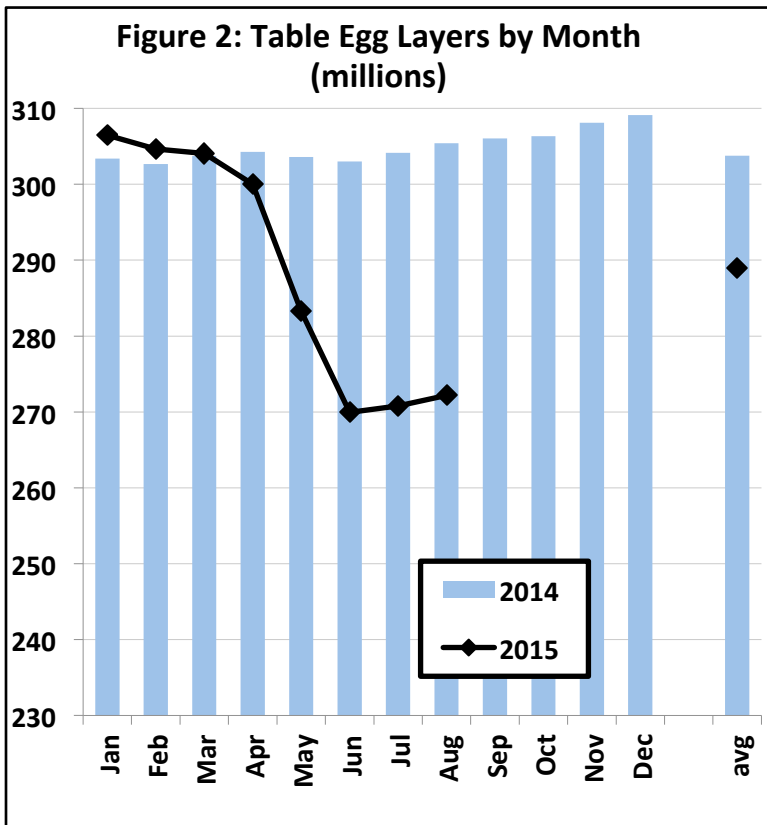


U.S. ALL EGGS, TABLE EGGS AND RATE OF LAY (ALL STATES)

TABLE 3

month	All Eggs (millions)			Table Eggs - human consumption (millions)			Rate of Lay (Table)	
	2014	2015	Change (%)	2014	2015	Change (%)	2014	2015
Jan	8,397	8,540	1.7	7,321	7,428	1.5	77.8	78.2
Feb	7,551	7,620	0.9	6,579	6,615	0.5	77.6	77.5
Mar	8,430	8,548	1.4	7,354	7,429	1.0	78.1	78.7
Apr	8,205	8,209	0.0	7,160	7,113	-0.7	78.4	79.0
May	8,428	7,993	-5.2	7,336	6,851	-6.6	77.9	78.1
Jun	8,151	7,416	-9.0	7,091	6,307	-11.1	78.0	77.8
Jul	8,503	7,674	-9.7	7,404	6,527	-11.8	78.5	77.7
Aug	8,491	7,690	-9.4	7,394	6,545	-11.5	78.1	77.6
Sep	8,186			7,126			77.6	
Oct	8,526			7,433			78.3	
Nov	8,411			7,353			79.5	
Dec	8,731			7,633			79.6	
<b>8 Month Avg.</b>	8,270	7,961	-3.7	7,205	6,852	-4.9	78.1	78.1
<b>Annual Avg.</b>	8,334			7,265			78.3	
<b>Total</b>	100,010	63,690		87,184	54,815			

Source: USDA NASS Chickens and Eggs



SHELL EGGS BROKEN UNDER FEDERAL INSPECTION (MILLION CASES)

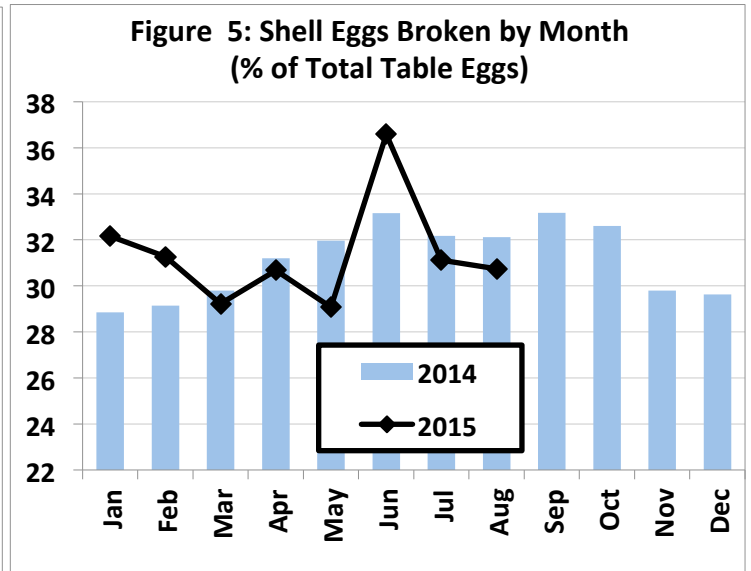
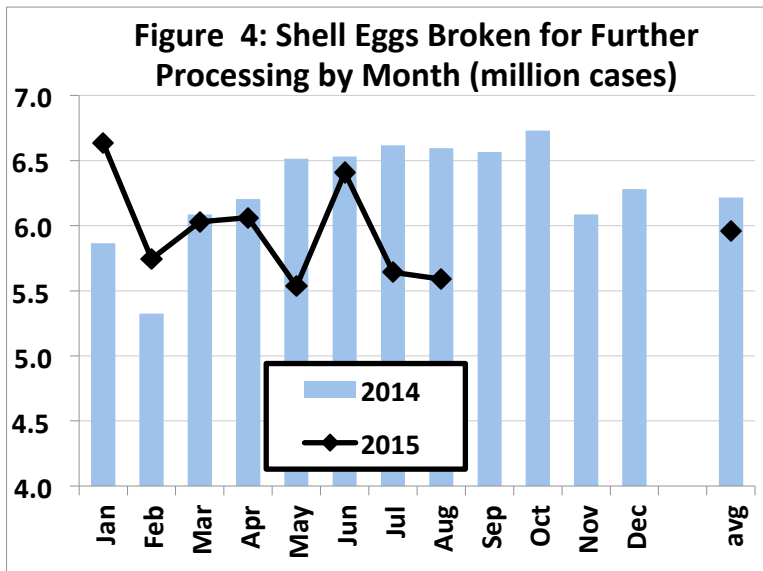
TABLE 4

month	2009	2010	2011	2012	2013	2014	2015	15/14 (%) Change
Jan	5.732	5.268	5.668	5.666	5.765	5.865	6.634	13.1
Feb	5.058	5.013	5.163	5.524	5.374	5.325	5.746	7.9
Mar	5.423	5.504	6.008	5.715	5.831	6.086	6.030	-0.9
Apr	5.900	5.714	5.464	5.634	5.950	6.205	6.061	-2.3
May	5.933	5.727	5.838	6.057	5.820	6.514	5.533	-15.1
Jun	5.612	6.206	6.167	5.955	6.118	6.532	6.408	-1.9
Jul	6.098	5.977	5.988	5.748	6.266	6.618	5.641	-14.8
Aug	5.681	5.884	6.061	6.523	6.200	6.596	5.589	-15.3
Sep	5.974	6.582	5.869	6.005	6.040	6.566		
Oct	6.105	5.842	5.805	6.109	6.289	6.731		
Nov	5.320	5.445	5.786	5.577	5.738	6.086		
Dec	5.424	5.891	5.615	5.964	5.745	6.281		
<b>8 Month Avg.</b>	5.680	5.662	5.795	5.853	5.915	6.218	5.955	-4.2
<b>8 Month Total</b>	45.437	45.293	46.357	46.822	47.324	49.741	47.642	
<b>12 Month Total</b>	68.260	69.054	69.431	70.477	71.136	75.405		

Source: USDA NASS Egg products - monthly

Million Cases Produced  
% BROKEN

219.144	221.728	228.286	235.956	242.178	152.264
31.5	31.3	30.9	30.1	31.1	31.3



PER CAPITA EGG CONSUMPTION BY QUARTER

TABLE 5

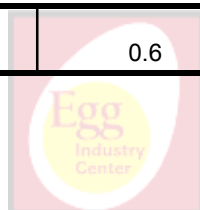
QUARTER	2008	2009	2010	2011	2012	2013	2014	2015*
1	61.8	62.0	61.8	61.3	63.2	64.3	64.7	64.4
2	61.3	61.5	61.9	61.5	62.2	63.4	65.3	61.5
3	62.0	61.4	62.5	62.8	63.3	64.7	66.3	59.7
4	63.8	62.9	63.1	64.3	65.6	66.0	66.7	62.4
<b>Total</b>	248.9	247.7	249.3	249.9	254.3	258.4	263.0	247.9

Change from previous year (eggs)

-1.2	1.6	0.6	4.4	4.1	4.6	-15.1
------	-----	-----	-----	-----	-----	-------

Source: USDA ERS Livestock and Meat Trade Data.

\* Estimates for 2015 (9/2015)

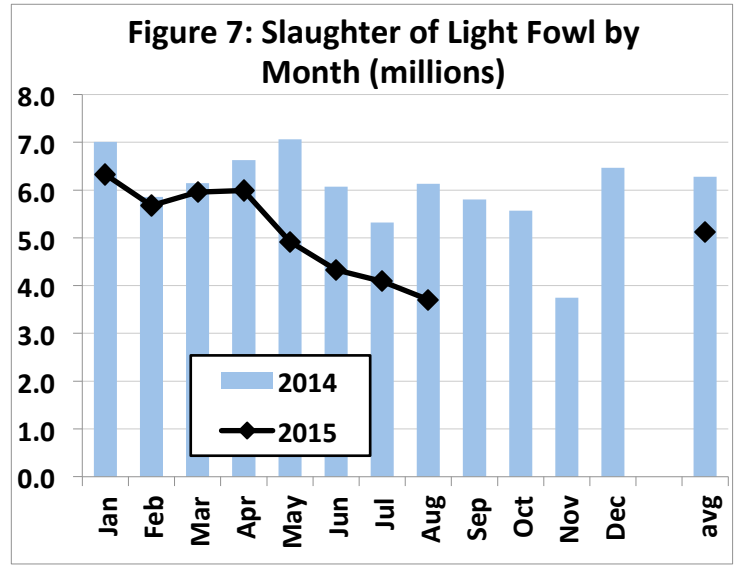
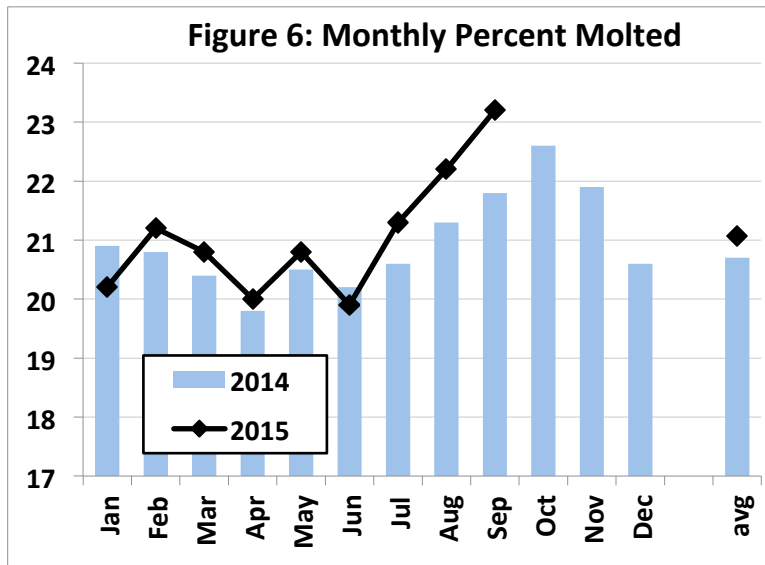


INDUCED MOLT PERCENT - U.S. TOTALS (1ST OF MONTH)

TABLE 6

month	In a Molt			Completed a Molt		Total		
	2014	2015	Change	2014	2015	2014	2015	Change
Jan	2.7	2.1	-0.6	18.2	18.1	20.9	20.2	-0.7
Feb	2.8	3.3	0.5	18.0	17.9	20.8	21.2	0.4
Mar	2.4	1.9	-0.5	18.0	18.9	20.4	20.8	0.4
Apr	1.9	2.0	0.1	17.9	18.0	19.8	20.0	0.2
May	2.8	3.1	0.3	17.7	17.7	20.5	20.8	0.3
Jun	3.0	2.4	-0.6	17.2	17.5	20.2	19.9	-0.3
Jul	2.6	2.9	0.3	18.0	18.4	20.6	21.3	0.7
Aug	3.3	2.7	-0.6	18.0	19.5	21.3	22.2	0.9
Sep	2.9	3.2	0.3	18.9	20.0	21.8	23.2	1.4
Oct	3.3			19.3		22.6		
Nov	2.0			19.9		21.9		
Dec	1.3			19.3		20.6		
<b>9 Month Avg.</b>	2.7	2.6	-0.1	18.0	18.4	20.7	21.1	0.4
<b>12 Month Avg.</b>	2.6			18.4		21.0		

Source: USDA NASS Chickens and Eggs

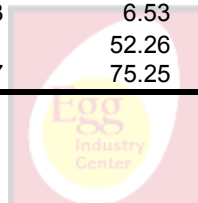


SLAUGHTER OF LIGHT FOWL (MILLIONS)

TABLE 7

month	2009	2010	2011	2012	2013	2014	2015	6 YR (09-14) Month Avg.
Jan	6.33	5.80	5.90	6.98	7.63	7.01	6.33	6.61
Feb	5.36	5.22	5.59	5.57	6.20	5.86	5.68	5.63
Mar	6.32	6.50	6.56	7.15	6.49	6.15	5.96	6.53
Apr	6.58	6.59	5.99	7.95	8.31	6.63	5.99	7.01
May	6.32	5.78	6.42	7.91	7.21	7.06	4.92	6.78
Jun	6.36	5.88	5.30	6.25	5.40	6.07	4.33	5.88
Jul	5.94	5.42	5.00	4.45	5.60	5.32	4.09	5.29
Aug	5.46	5.64	5.85	6.00	6.81	6.13	3.71	5.98
Sep	5.20	6.12	5.68	5.39	5.50	5.80		5.61
Oct	5.85	5.01	5.56	5.60	5.73	5.57		5.55
Nov	4.44	4.07	4.92	5.12	3.59	3.75		4.31
Dec	5.53	5.63	5.60	6.89	6.45	6.47		6.09
<b>8 Month Avg.</b>	6.08	5.85	5.83	6.53	6.71	6.28	5.12	6.21
<b>8 Month Total</b>	48.66	46.83	46.61	52.26	53.66	50.22	41.00	49.71
<b>12 Month Total</b>	69.68	67.66	68.37	75.25	74.92	71.80		71.28

Source USDA NASS Poultry Slaughter



EXPORT OF TABLE EGGS IN THE SHELL IN 2015 (Thousand cases- 30 doz)

TABLE 8

Month \ To	North America	Central America	Caribbean	European Union-28	East Asia	Southeast Asia	Middle East	Total 2015	Total 2014	% of U.S. Production
Jan	300.6	0.0	17.8	9.1	126.0	0.3	8.8	468.2	293.2	2.27
Feb	356.7	0.0	22.5	6.4	92.7	0.0	6.8	491.3	361.9	2.67
Mar	401.9	0.0	9.6	4.9	97.4	0.0	7.2	525.8	351.7	2.55
Apr	426.1	0.0	10.4	1.8	92.4	0.0	3.8	540.0	414.0	2.73
May	258.8	0.0	6.2	0.1	80.4	0.0	2.3	352.5	546.2	1.85
Jun	268.0	0.0	10.0	0.1	40.8	0.0	0.0	322.4	418.7	1.84
Jul	254.2	0.0	8.0	0.3	57.7	0.0	0.0	321.8	584.5	1.78
Aug	351.9	0.0	14.2	0.1	53.6	0.0	0.0	421.7	543.5	2.32
Sep									452.4	
Oct									612.3	
Nov									616.7	
Dec									974.5	
<b>8 Mo. Total</b>	<b>2,618.0</b>	<b>0.0</b>	<b>98.7</b>	<b>22.8</b>	<b>641.0</b>	<b>0.3</b>	<b>28.9</b>	<b>3,443.7</b>	<b>3,513.6</b>	<b>2.25</b>
<b>%</b>	<b>76.0</b>	<b>0.0</b>	<b>2.9</b>	<b>0.7</b>	<b>18.6</b>	<b>0.0</b>	<b>0.8</b>			

Source: USDA Foreign Agric. Service from U.S. Dept. of Commerce, U.S. Census Bureau, Foreign Trade Stats

EXPORT OF EGG PRODUCTS IN 2015 (EQUIVALENT: thousand cases- 30 doz)

TABLE 9

Month \ To	North America	Central America	Caribbean	European Union-28	East Asia	Southeast Asia	Middle East	Total 2015	Total 2014	% of U.S. Production
Jan	208.0	8.8	6.5	118.0	132.6	14.0	8.3	517.3	516.4	2.51
Feb	194.9	8.0	5.5	58.0	114.9	11.9	2.9	436.1	518.2	2.37
Mar	184.4	27.0	10.2	96.4	110.9	13.3	13.4	463.9	504.8	2.25
Apr	209.6	9.4	6.1	36.1	124.2	5.1	3.8	402.1	488.7	2.04
May	153.5	2.4	5.3	43.6	119.6	24.9	9.6	385.0	428.7	2.02
Jun	94.5	6.0	2.3	29.1	48.0	11.9	0.7	194.7	519.6	1.11
Jul	88.5	3.9	2.8	21.4	38.9	12.8	14.1	194.3	396.5	1.07
Aug	148.6	2.1	9.3	40.0	42.4	8.5	0.2	254.1	472.9	1.40
Sep									514.7	
Oct									516.4	
Nov									425.4	
Dec									582.5	
<b>8 Mo. Total</b>	<b>1,282.1</b>	<b>67.7</b>	<b>48.1</b>	<b>442.6</b>	<b>731.5</b>	<b>102.3</b>	<b>53.1</b>	<b>2,847.5</b>	<b>3,845.8</b>	<b>1.85</b>
<b>%</b>	<b>45.0</b>	<b>2.4</b>	<b>1.7</b>	<b>15.5</b>	<b>25.7</b>	<b>3.6</b>	<b>1.9</b>			

Converted from metric tonnes at a rate of one metric tonne equals approximately 52.4 thirty dozen cases.

Source: USDA Economic Research Service from U.S. Dept. of Commerce, U.S. Census Bureau, Foreign Trade Stats.

TOTAL EGGS EXPORTED - 2015

TABLE 10

	Table Eggs Produced		Table Eggs Exported		Egg Products Exported		Total Exported	
	(000) Cases		Cases	% of U.S.	Cases	% of U.S.	Cases	% of U.S.
Jan	20,633		468.2	2.27	517.3	2.51	985.4	4.78
Feb	18,375		491.3	2.67	436.1	2.37	927.4	5.05
Mar	20,636		525.8	2.55	463.9	2.25	989.7	4.80
Apr	19,758		540.0	2.73	402.1	2.04	942.1	4.77
May	19,031		352.5	1.85	385.0	2.02	737.5	3.88
Jun	17,519		322.4	1.84	194.7	1.11	517.1	2.95
Jul	18,131		321.8	1.78	194.3	1.07	516.1	2.85
Aug	18,181		421.7	2.32	254.1	1.40	675.8	3.72
Sep								
Oct								
Nov								
Dec								
<b>Total/Av</b>	<b>152,264</b>		<b>3,443.7</b>	<b>2.26</b>	<b>2,847.5</b>	<b>1.87</b>	<b>6,291.2</b>	<b>4.13</b>

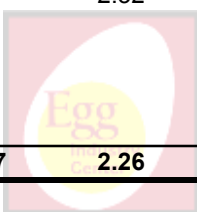
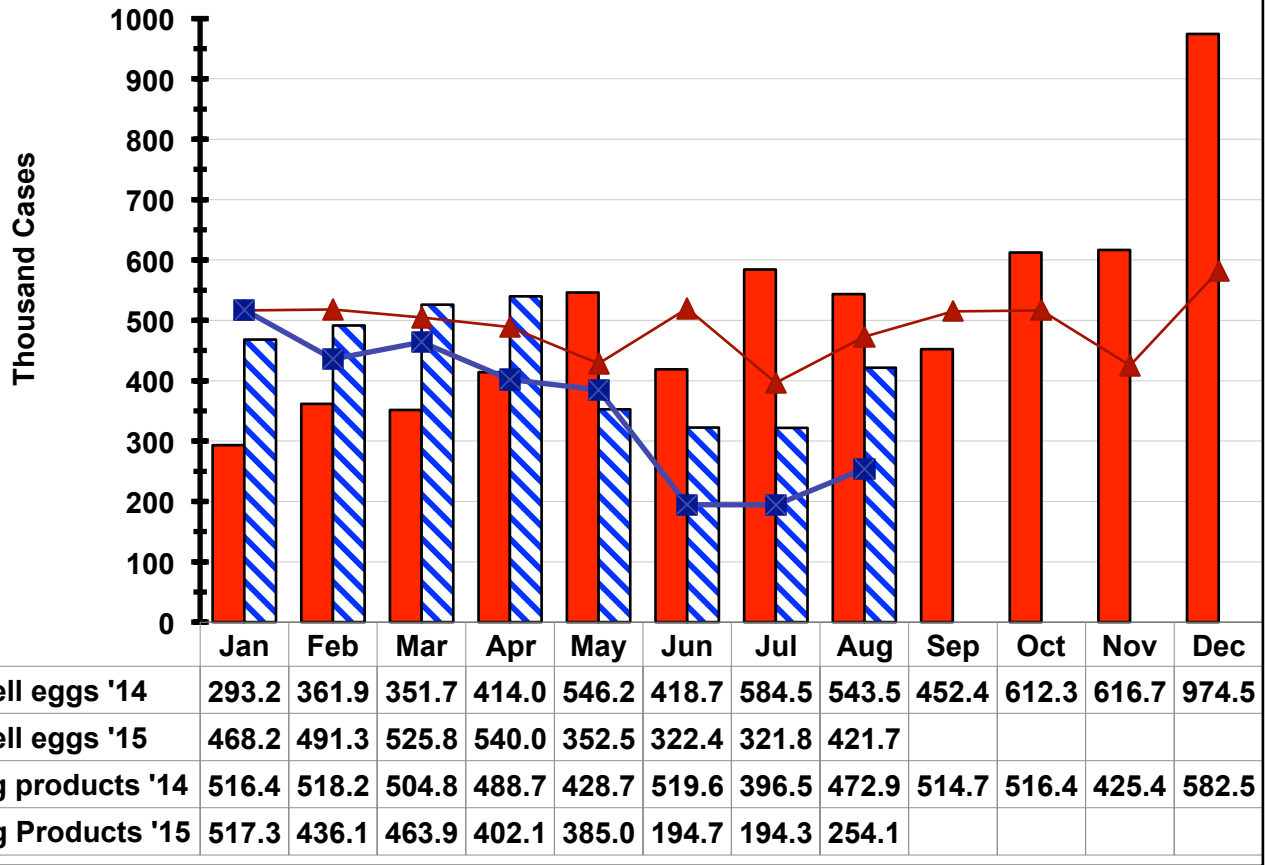


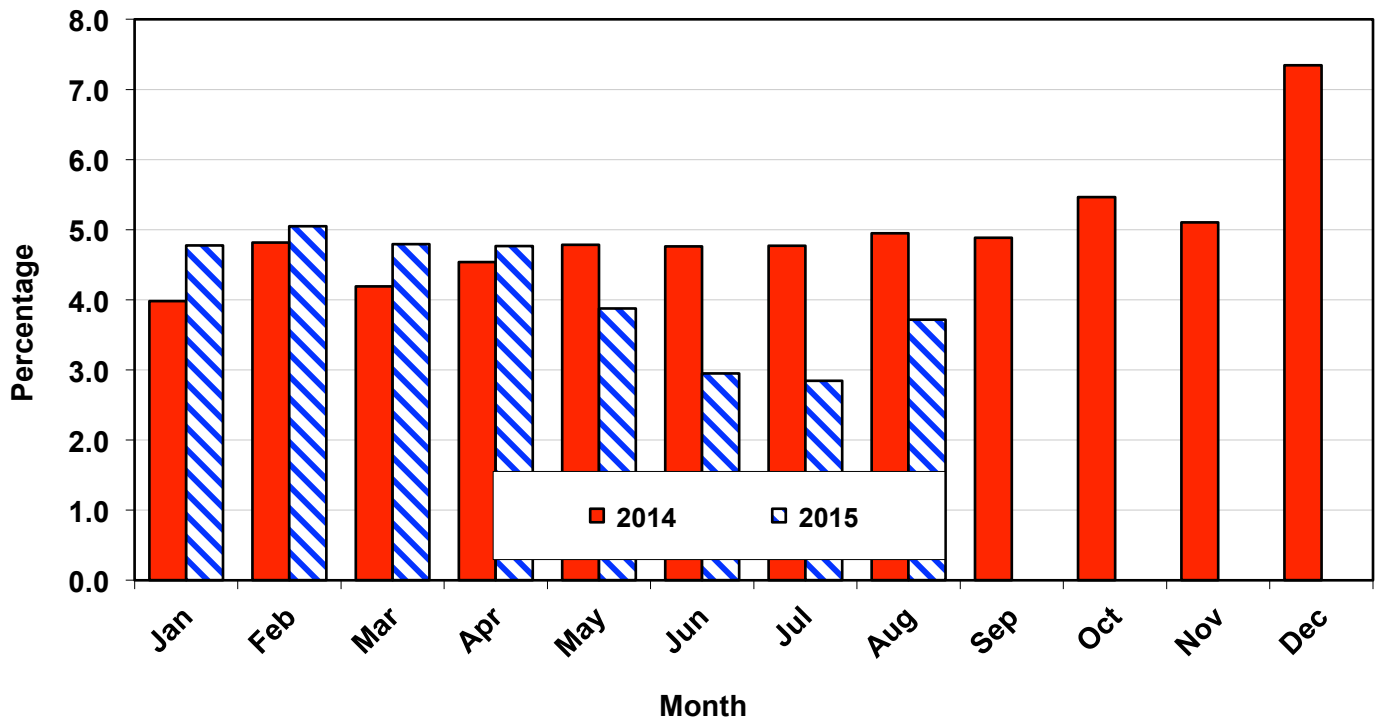


Figure 8: U.S. Egg Exports by Month - 2014 and 2015



Note: Information has been converted from metric tonnes at a rate of 42 lbs. per case of liquid egg (edible + inedibles).

Figure 9: Exported Eggs by Month - 2014 and 2015  
(percentage of eggs produced)



ALL EGGS PRODUCED, INCLUDING HATCHING EGGS, BY REGION (Million) - 2015

TABLE 11

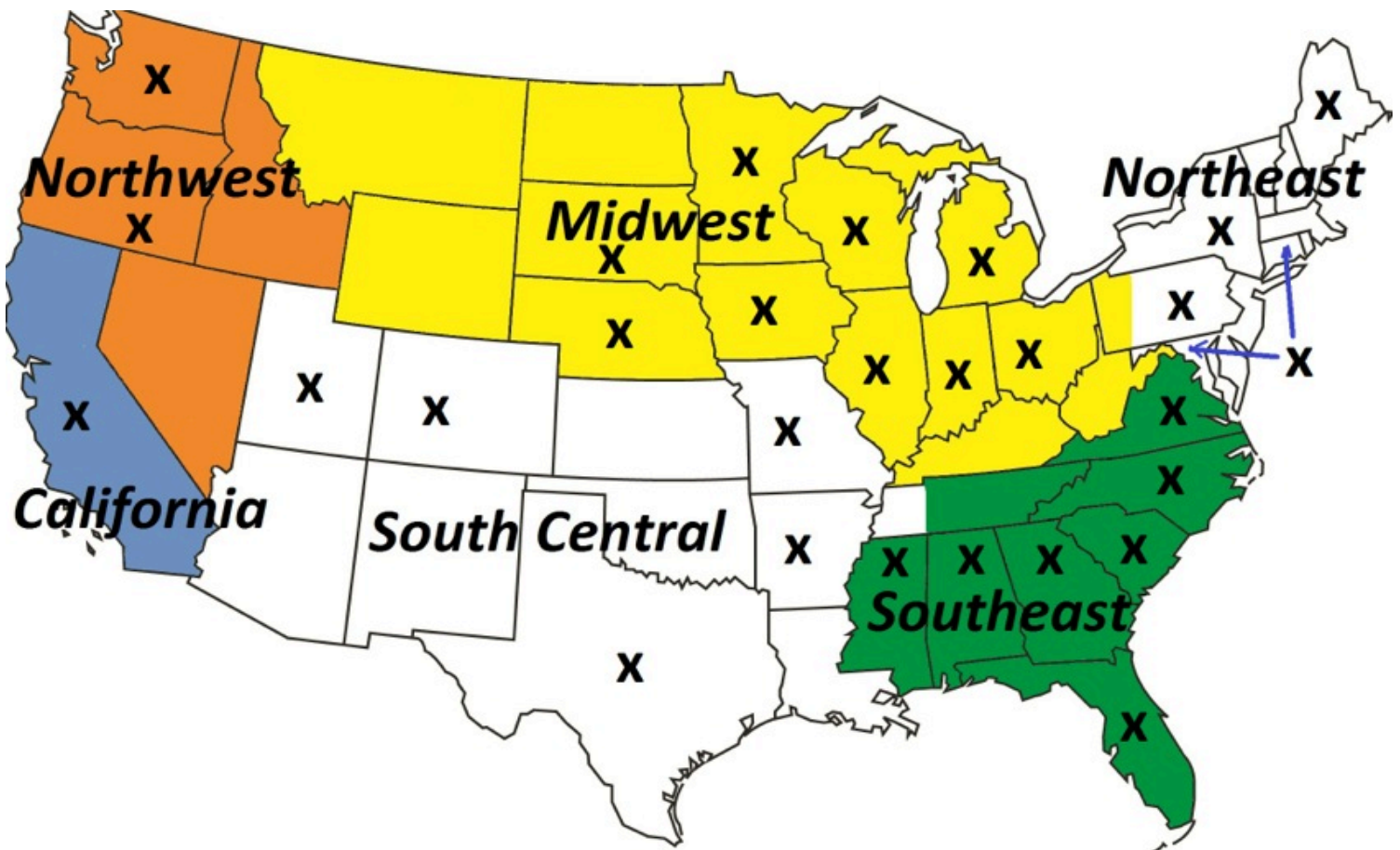
month	Northeast*	Southeast	South Central	Midwest	Northwest	California	U.S. Total
Jan	1,002	1,395	1,006	3,969	162	313	8,540
Feb	894	1,253	897	3,535	189	287	7,620
Mar	1,002	1,410	1,022	3,959	182	320	8,548
Apr	827	1,348	998	3,776	183	311	8,209
May	838	1,379	1,013	3,466	174	323	7,993
Jun	810	1,347	971	3,028	182	305	7,416
Jul	839	1,390	1,020	3,115	183	310	7,674
Aug	844	1,385	1,032	3,119	175	314	7,690
Sep							
Oct							
Nov							
Dec							
<b>8' Month Avg.</b>	882	1,363	995	3,496	179	310	7,961
<b>% of total</b>	11.1	17.1	12.5	43.9	2.2	3.9	

Source: USDA NASS Chickens and Eggs

Note: All States are not represented (see map below)

\* The drop in the Northeast region number is mostly explained by not having a count for CT and ME for the period after March

Map of U.S. Regions, as defined by Urner Barry, and the location of information used in this report



Notes

The x's mark the States where there is USDA data available on number of layers, egg production and percent molt.

Northwest is the sum of OR and WA

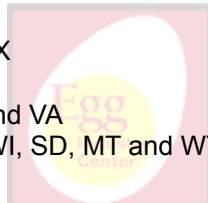
South Central is the sum of AR, UT, CO, MO and TX

Northeast is the sum of CT, MD, ME, NY and PA

Southeast is the sum of AL, FL, GA, MS, NC, SC and VA

Midwest is the sum of IA, IL, IN, MI, MN, NE, OH, WI, SD, MT and WY

California is the state of California only



**ALL LAYERS BY REGION, INCLUDING BREEDERS (Million) - 2015**

**TABLE 12**

month	Northeast*	Southeast	South Central	Midwest	Northwest	California	U.S. Total
Jan	39.9	64.7	45.1	164.5	9.7	13.4	363.7
Feb	39.5	64.6	44.7	164.2	9.6	13.3	362.3
Mar	39.2	65.2	45.0	164.0	9.6	13.2	362.5
Apr	32.9	64.9	45.4	160.4	9.4	13.2	358.4
May	32.8	64.4	45.1	144.6	9.2	13.3	341.6
Jun	33.1	64.7	44.8	130.5	9.6	13.5	328.7
Jul	33.3	64.6	45.3	130.0	9.8	13.5	329.0
Aug	33.5	64.2	46.2	130.8	9.7	13.4	330.1
Sep							
Oct							
Nov							
Dec							
<b>8 Month Avg.</b>	35.5	64.6	45.2	148.6	9.6	13.4	347.1
<b>% of total</b>	10.2	18.6	13.0	42.8	2.8	3.8	

Source: USDA NASS Chickens and Eggs

\* The drop in the Northeast region number is mostly explained by not having a count for CT and ME for the period after March

**TABLE EGG LAYERS IN FLOCKS OF 30,000 AND ABOVE BY REGION (Million) - 2015**

**TABLE 13**

month	Northeast*	Southeast	South Central	Midwest	Northwest	California	U.S. Total
Jan	37.1	32.8	29.3	159.3	9.4	12.9	298.3
Feb	36.7	32.6	28.9	159.1	9.3	12.8	296.8
Mar	36.5	32.9	29.1	158.8	9.3	12.7	296.5
Apr	30.4	32.2	29.4	155.2	9.1	12.7	292.0
May	30.3	31.4	29.0	139.5	8.9	12.8	275.0
Jun	30.7	31.9	28.8	125.3	9.3	13.0	262.2
Jul	30.8	32.2	29.2	124.9	9.5	13.0	262.8
Aug	31.1	32.0	29.9	125.7	9.4	12.9	264.1
Sep							
Oct							
Nov							
Dec							
<b>8 Month Avg.</b>	33.0	32.2	29.2	143.5	9.3	12.9	281.0
<b>% of total</b>	11.7	11.5	10.4	51.1	3.3	4.6	
<b>Table/total layers (%)</b>	92.8%	49.9%	64.6%	96.5%	96.8%	96.3%	81.0%

Source: USDA NASS Chickens and Eggs

\* The drop in the Northeast region number is mostly explained by not having a count for CT and ME for the period after March

**TOTAL MOLT (in-molt plus post-molt) BY REGION (Simple average of reporting States, %) - 2015**

month	Northeast*	Southeast	South Central	Midwest	Northwest	California	5 regions
Jan	3.0	19.0	21.5	18.9	24.5	34.5	20.2
Feb	4.0	21.6	23.5	18.9	21.3	33.0	20.4
Mar	3.5	19.9	22.0	18.8	23.3	35.0	20.4
Apr	4.4	18.1	20.6	18.1	24.3	33.0	19.7
May	1.1	19.1	20.1	21.2	24.5	36.0	20.3
Jun	2.8	18.4	20.4	20.2	24.3	33.5	19.9
Jul	3.1	20.0	21.5	18.4	22.5	32.5	19.7
Aug	3.9	21.7	21.9	18.9	23.3	36.0	20.9
Sep	3.0	22.9	24.0	21.7	23.3	32.5	21.2
Oct							
Nov							
Dec							
<b>9 Month Avg.</b>	3.2	20.1	21.7	19.5	23.4	34.0	20.3
<b>year 2014 avg.</b>	6.5	17.0	20.7	20.0	30.7	30.7	19.0

Source: USDA NASS Chickens and Eggs

Notes: average molt is estimated as the simple average of the reported States

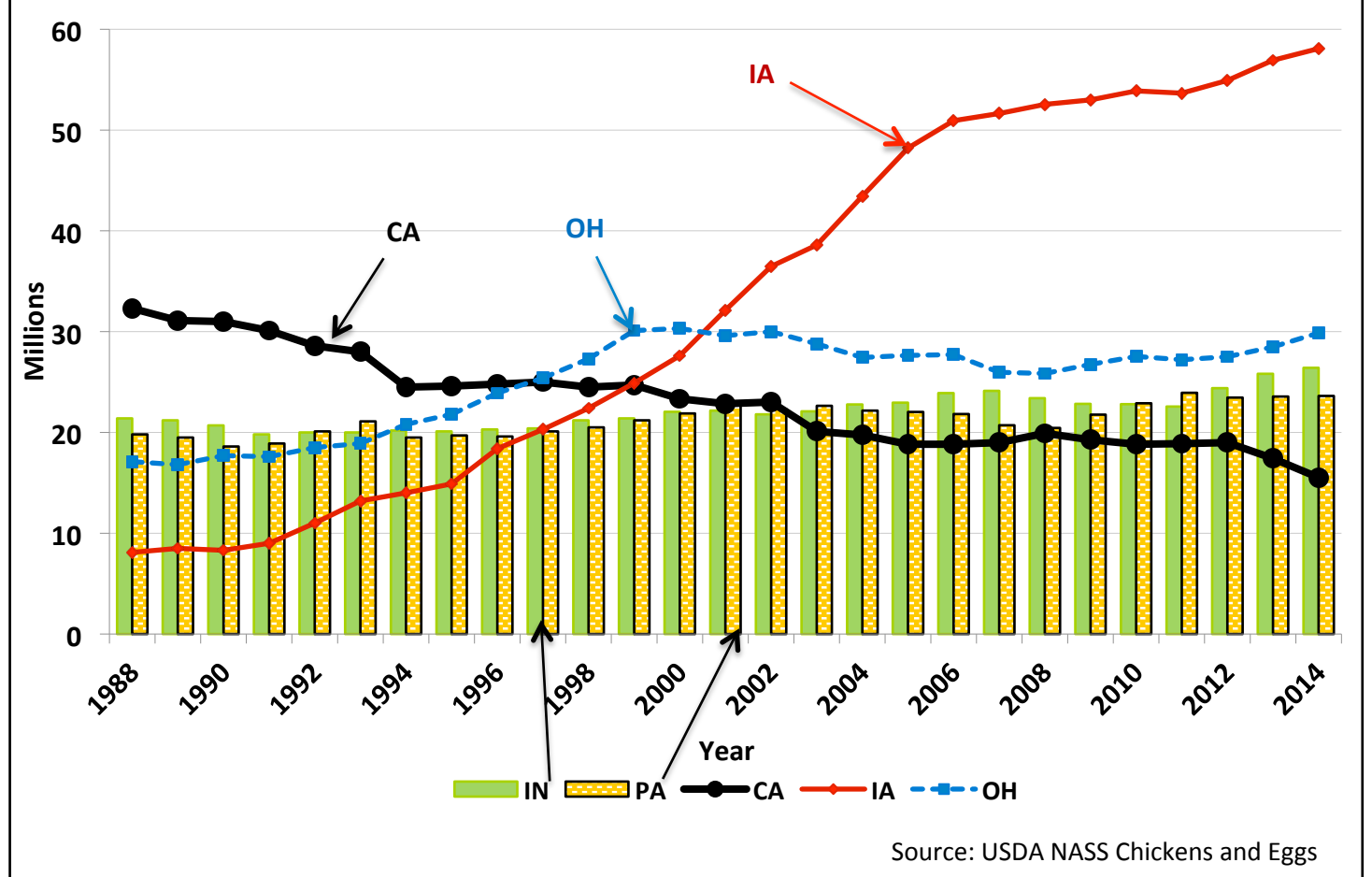
\* The drop in the Northeast region number is mostly explained by not having a count for CT and ME for the period after March

TABLE EGG LAYERS IN LEADING STATES - (LAYERS IN 30,000+ HEN FLOCKS) - 2015

TABLE 15

month	IA	OH	IN	PA	CA	TX	U.S.
Aug-2014	58.02	30.03	26.53	23.49	15.43	14.67	297.41
			(Millions)				
Jan-2015	58.49	29.69	25.89	23.99	12.88	14.89	298.32
Feb-2015	58.33	29.94	25.74	23.66	12.84	14.76	296.76
Mar-2015	58.23	30.28	25.42	23.62	12.72	14.79	296.51
Apr-2015	54.88	30.83	25.20	23.56	12.73	14.85	291.96
May-2015	43.01	30.82	25.56	23.40	12.77	14.93	274.99
Jun-2015	33.24	30.53	25.67	23.63	12.95	15.04	262.18
Jul-2015	32.45	30.93	25.92	23.73	13.04	15.36	262.83
Aug-2015	32.60	30.83	25.98	23.75	12.92	15.61	264.09
Sep-2015							
Oct-2015							
Nov-2015							
Dec-2015							
<b>8 Month Avg.</b>	<b>46.40</b>	<b>30.48</b>	<b>25.67</b>	<b>23.67</b>	<b>12.86</b>	<b>15.03</b>	<b>280.95</b>
Source: USDA NASS Chickens and Eggs	% of all U.S. table egg layers						<b>97.2</b>

Figure 10: Leading States' Table Egg Layers in Flocks of 30,000 and Above (1988-2014)



**PROJECTED U.S. EGG-TYPE HATCHERY SUPPLY FLOCK (Millions)**

**TABLE 16**

month	2010	2011	2012	2013	2014	2015	2016
Jan	2.730	3.087	2.706	2.791	2.436	2.608	2.797
Feb	2.716	3.123	2.659	2.830	2.515	2.535	2.797
Mar	2.745	3.108	2.653	2.786	2.503	2.553	
Apr	2.785	3.039	2.703	2.786	2.468	2.610	
May	2.828	2.998	2.672	2.649	2.555	2.619	
Jun	2.910	2.996	2.657	2.745	2.476	2.664	
Jul	2.999	2.883	2.672	2.579	2.540	2.682	
Aug	3.010	2.848	2.731	2.613	2.536	2.689	
Sep	3.019	2.877	2.732	2.630	2.472	2.605	
Oct	3.023	2.779	2.819	2.588	2.530	2.718	
Nov	2.998	2.755	2.778	2.515	2.497	2.917	
Dec	3.099	2.713	2.791	2.537	2.439	2.892	
<b>2 month avg.</b>	2.723	3.105	2.683	2.811	2.476	2.572	2.797
<b>12 month avg.</b>	2.905	2.934	2.714	2.671	2.497	2.674	

Source: USDA NASS Chickens and Eggs

Note: The hatchery supply flock estimates are made by using 7 to 18 months prior hatch minus 9% mortality

**PULLETS TO BE HOUSED BASED UPON U.S. HATCH 5 MONTH AGO (Millions)**

**TABLE 17**

(47.5% of CHICKS PLACED multiplied by a 95% LIVABILITY FACTOR)

month	2011	2012	2013	2014	2015	2016	2011 to '15 month avg.
Jan	16.7	18.7	17.3	17.5	18.0	21.1	17.6
Feb	18.1	18.0	17.3	19.0	19.7		18.4
Mar	18.6	17.0	17.1	19.2	20.1		18.4
Apr	17.5	16.9	16.5	18.9	16.5		17.3
May	17.0	17.6	18.5	18.6	18.2		18.0
Jun	18.3	18.6	19.8	20.1	18.7		19.1
Jul	16.9	18.3	19.1	18.5	18.2		18.2
Aug	19.7	19.4	19.7	20.0	21.4		20.0
Sep	19.4	19.5	20.8	20.6	21.2		20.3
Oct	19.4	20.1	22.6	22.2	21.5		21.2
Nov	17.6	17.5	19.1	19.9	21.1		19.0
Dec	16.7	16.2	18.0	19.1	19.2		17.8
<b>1 month avg.</b>	16.7	18.7	17.3	17.5	18.0	21.1	17.6
<b>Annual Avg.</b>	18.0	18.2	18.8	19.5	19.5		18.8
<b>Total</b>	215.9	217.9	225.6	233.4	233.9		225.3

Source: USDA NASS Chickens and Eggs

% Change to date

17.74

Note: The number of pullets to be housed was reduced by 6 million based on the number reported as lost to avian influenza. We assumed the reduction as evenly spread during the period between May and September 2015 (assuming that the ages of affected birds was evenly distributed).



PROJECTED U.S. TABLE EGG FLOCK LESS THAN 72 WEEKS OF AGE (Millions)

TABLE 18

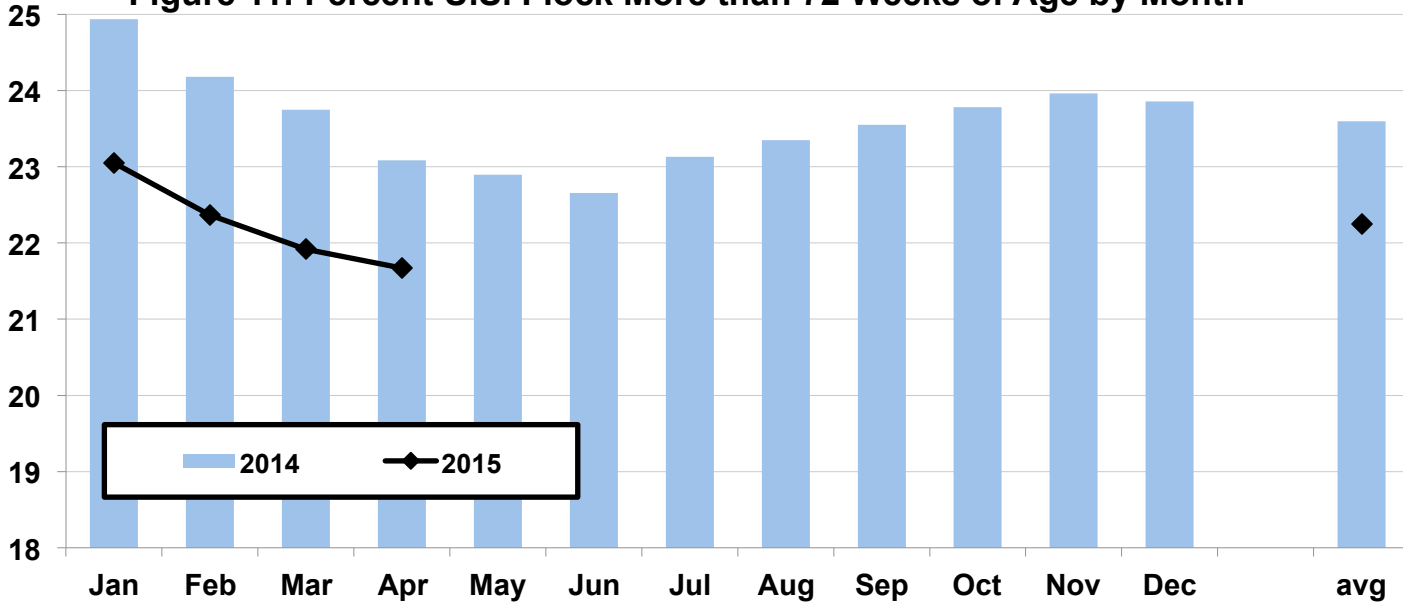
month	Number				% of National Flock over 72 wks.		
	2012	2013	2014	2015	2013	2014	2015
Jan	219.7	220.1	227.7	235.8	26.3	24.9	23.1
Feb	219.6	219.4	229.5	236.5	26.8	24.2	22.4
Mar	217.9	219.6	231.6	237.4	26.9	23.7	21.9
Apr	217.3	219.1	234.0	235.0	26.5	23.1	21.7
May	217.9	220.0	234.1	*	25.8	22.9	
Jun	218.2	221.1	234.4	*	25.5	22.7	
Jul	219.6	221.9	233.8	*	25.4	23.1	
Aug	219.4	222.1	234.1	*	25.8	23.4	
Sep	219.5	223.4	234.0	*	25.6	23.6	
Oct	220.2	226.0	233.5	*	25.0	23.8	
Nov	220.2	227.5	234.3	*	25.3	24.0	
Dec	219.7	229.3	235.4	*	24.9	23.9	
<b>4 month avg.</b>	218.6	221.8	232.8	237.8			
<b>4 month avg.</b>					26.6	24.0	22.3
<b>12 month avg.</b>	219.1	222.5	233.0		25.8	23.6	

Source: Egg Industry Center based on USDA NASS Chickens and Eggs data

Note: The number of layers younger than 72 weeks of age are estimated as the sum of the Egg-Type Chicks Hatched between 5 and 17 months before adjusted by a 9% loss

\* Special note: A special adjustment to this calculation will be needed as a result of the avian influenza outbreak, but it will depend on some assumptions about the ages of the layers affected.

Figure 11: Percent U.S. Flock More than 72 Weeks of Age by Month



**FLOCK SIZE PROJECTION**

The U.S. flock size is projected for the current year and the following year for each month. Projections start with the first of the month official USDA count and are then adjusted monthly. Adjustments are made considering the most recent:

1. Hatch data (projected 5-months into the future with mortality). Subsequent hatches are based upon 6-year percentage trends for each month.
2. USDA slaughter data and estimates based upon 6-year trends for subsequent months.
3. Missing estimates are included for on-farm slaughter, died, exports, etc. This data is expressed as a percentage of each month's beginning count based upon recent history.

**TABLE 19** \_

**First of the Month Projection Estimates of U.S. Table Egg Layers (millions)**

Actual	Actual	Actual	Actual	Actual	Actual	Actual	Actual	Actual	Projected	Projected	
2015	2015	2015	2015	2015	2015	2015	2015	2015	2015	2015	2015
Jan	Feb	Mar	Apr	May	Jun	Jul	Aug	Sep	Oct	Nov	Dec
308.2	304.6	305.1	304.1	296.0	270.2	270.3	271.5	272.9	276.1	280.7	286.7
Project. Year end:						<b>Dec, 2015 - 288.5</b>					

The avian influenza outbreak created a large reduction on the U.S. flock; therefore, we expect our flock projections to be a lot less accurate than normal until the situation stabilizes. To be able to approximate a projection we assumed that:

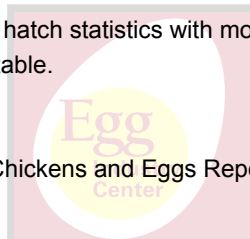
- the age of the 6 million pullets lost to AI were evenly distributed
- the percent of the flock culled (slaughter, died or missing) by month stays the same
- producers find a place where to house the pullets grown (based on the 5 month before hatch)

**U.S. FLOCK SIZE PROJECTED VS. ACTUAL (1st OF THE MONTH) - 2015 (Millions)** **TABLE 20** \_  
 Projected on Jan. 27, 2015 (EIC). Not changed during the year.

Month	Beginning count		Replacements		Slaughter	
	Projected	Actual	Projected	Actual	Projected	Actual
Jan	304.8	308.2	17.8	18.0	6.7	6.3
Feb	303.0	304.6	19.5	19.7	5.7	5.7
Mar	304.1	305.1	20.0	20.1	6.7	6.0
Apr	306.1	304.1	16.5	16.5	7.0	6.0
May	302.2	296.0	19.4	18.2	6.9	4.9
Jun	302.3	270.2	19.4	18.7	6.4	4.3
Jul	301.8	270.3	18.6	18.2	5.6	4.1
Aug	302.3	271.5	20.7	21.4	6.2	3.7
Sep	304.2	272.9	20.7	21.2	5.8	
Oct	304.9		21.1	21.5	5.8	
Nov	307.3		19.8	21.1	4.8	
Dec	310.6		18.2	19.2	6.3	
<b>Current avg</b>	303.4	289.2	19.3	19.5	6.4	5.1

1. Note: Projections are based upon USDA data and are updated monthly.
2. Please note: The above projections are updated monthly. The current projections are shown in Table 19.
3. Projected = Egg Industry Center
4. Actual = Chickens and Eggs Report - USDA NASS
5. USDA replacements are projected ahead from previous hatch statistics with mortality and placement adjustments.
6. Mortality and missing birds are not shown in the above table.

NOTE: the projections in table 20 were made before the USDA Chickens and Eggs Report adjustment and before the avian influenza outbreak.





### 2015 United States Flock Size Projections

Table 22

For August 2015

**USDA preliminary**  
**Actual count**

**Estimated number of U.S. table egg layers (million) on the 1<sup>st</sup> of each month**

Estimated For Month	Estimated: December 2014	Month Number of Layers Projected for 2015/2016											
		2015 Jan	Feb	Mar	Apr	May	June	July	Aug	Sept	Oct	Nov	Dec
Jan-15	306.2	304.8	308.2										
Feb-15	304.4	302.9	304.7	304.6									
Mar-15	305.3	304.4	305.9	304.7	305.1								
Apr-15	306.9	306.2	307.8	306.7	303.1	296.0							
May-15	302.9	302.1	303.9	302.9	*	295.9	270.2						
Jun-15	301.9	301.9	303.9	303.0	*	*	270.6	270.3					
Jul-15	301.5	301.5	303.9	303.2	*	*	270.7	269.7	271.5				
Aug-15	301.9	301.9	304.4	304.7	*	*	273.0	271.9	271.2				
Sep-15	303.8	303.9	306.3	306.6	*	*	277.5	276.4	275.7	272.9			
Oct-15	304.7	304.7	307.0	307.3	*	*	280.5	279.3	278.7	276.1			
Nov-15	307.1	307.1	309.5	309.7	*	*	284.9	283.7	283.1	280.7			
Dec-15	310.1	310.9	312.9	313.2	*	*	289.7	289.7	289.1	286.7			
Jan-16		309.9	312.4	312.6	*	*	*	*	*	288.5			
Feb-16		308.7	311.4	311.7	*	*	*	*	*	*			
Mar-16		309.1	311.6	311.9	*	*	*	*	*	*			
Apr-16		309.3	312.0	312.3	*	*	*	*	*	*			
May-16		306.6	309.3	309.6	*	*	*	*	*	*			
Jun-16		305.3	308.2	308.5	*	*	*	*	*	*			
Jul-16		304.8	307.8	308.1	*	*	*	*	*	*			
Aug-16		305.2	308.3	308.6	*	*	*	*	*	*			
Sep-16		307.2	310.3	310.5	*	*	*	*	*	*			
Oct-16		308.0	311.0	311.3	*	*	*	*	*	*			
Nov-16		310.5	313.5	313.7	*	*	*	*	*	*			
Dec-16		314.3	317.0	317.2	*	*	*	*	*	*			

THIS IS A NEW PAGE TO VISUALIZE CHANGES IN FLOCK PROJECTIONS AS THE YEAR EVOLVES

\* Note: projection cancelled temporarily because of the avian influenza outbreak





Figure 12: U.S. Monthly Table-Egg Layers (2002-2015)

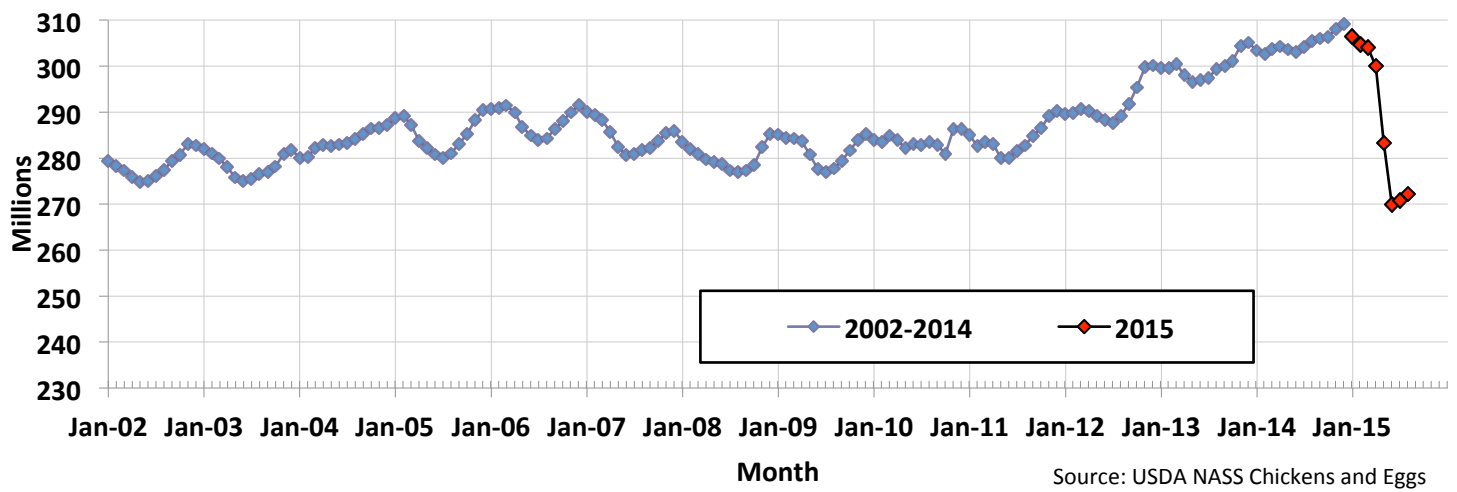


Figure 13: U.S. Table Eggs per Hundred Hens per Day by Month (2002-2015)

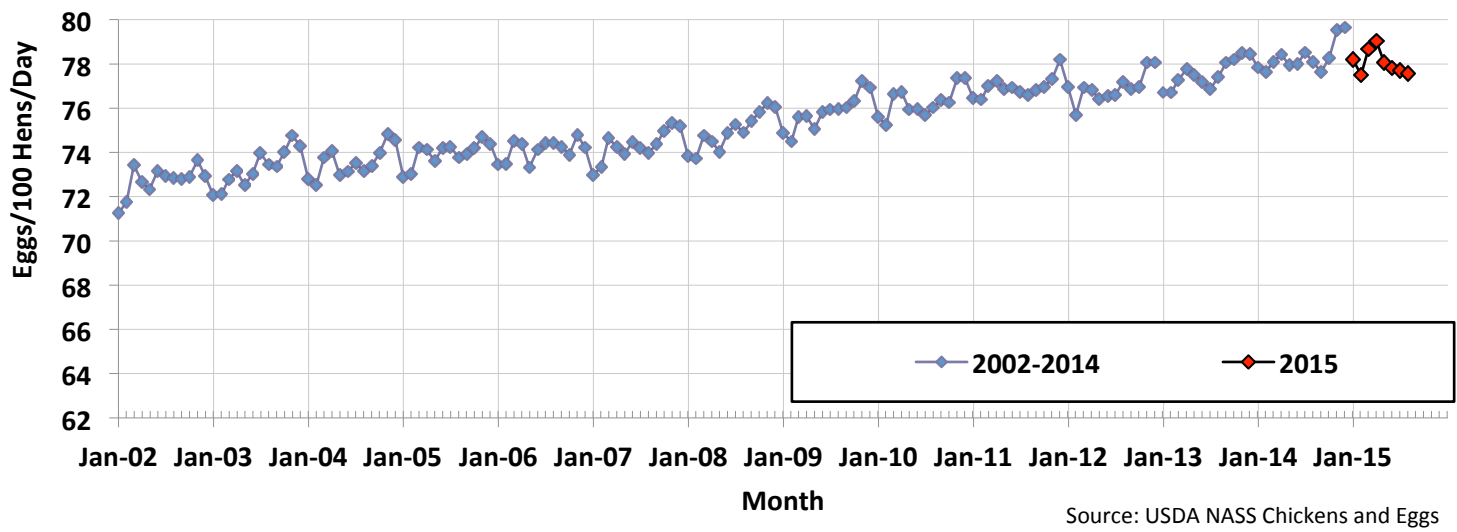
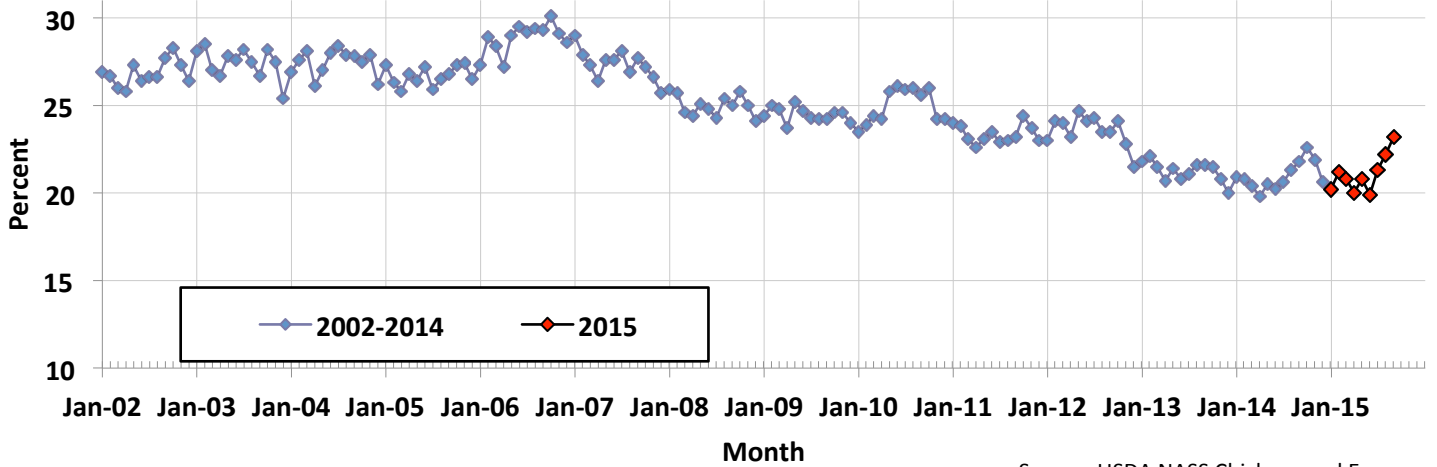
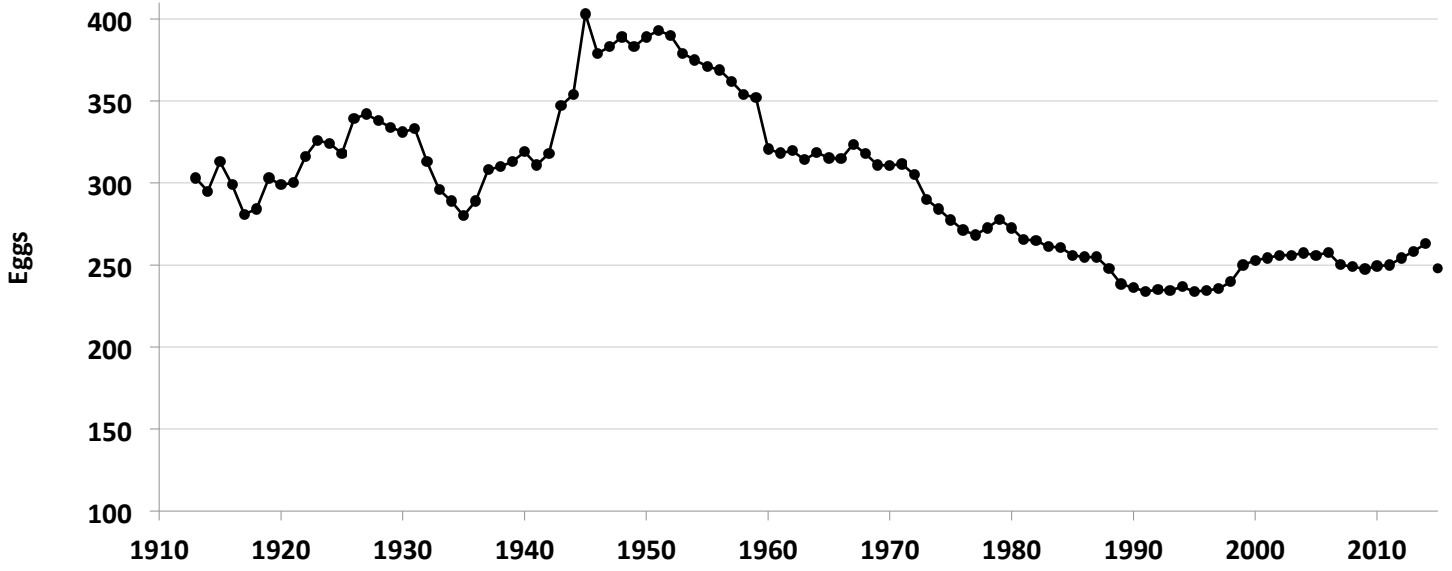


Figure 14: Monthly Percent of U.S. Flock Molted (2002-2015)



Source: USDA NASS Chickens and Eggs

Figure 15: U.S. Per Capita Egg Consumption by Year (1913-2015)



Source: USDA ERS



**SUMMARY TO DATE**

**Table 23**

			2014	2015	% Change
HATCH of EGG-TYPE STRAIGHT RUN (THOUSANDS) (U.S.) (Total)		Jan to Aug	350,632	370,902	5.8
TABLE-EGG LAYERS (MILLIONS) (U.S.) (Avg.)		Jan to Aug	303.8	288.9	-4.9
TABLE EGGS (MILLIONS/MONTH) (U.S.) (Avg.)		Jan to Aug	7,205	6,852	-4.9
RATE OF LAY (%) (Avg.)		Jan to Aug	78.1	78.1	0.0
U.S. TABLE EGG AVG. CASES/WEEK (THOUSANDS)		Jan to Aug	1,660	1,579	-4.9
AVG MONTHLY CASES OF EGGS BROKEN (MILLION) (U.S.)		Jan to Aug	6.218	5.955	-4.2
			<b>2013</b>	<b>2014</b>	<b>Difference</b>
PERCENT OF U.S. FLOCK IN or POST MOLT (Avg.)		Jan to Sep	20.7	21.1	0.4
AVVERAGE PULLETS ADDED/MONTH (MILLIONS) (U.S.)		Jan to Jan 2014	18.0	21.1	3.2

Note: U.S. layer numbers and egg prices are projected 12-months into the future in other reports published by the Egg Industry Center. Contact Maro Ibarburu at [maro@iastate.edu](mailto:maro@iastate.edu) to be placed on the mailing list to receive monthly copies of these reports.

**Webpages of some of the sources of information,  
Access these sites by clicking on the blue addresses below:**

- University of California Poultry Page <http://animalscience.ucdavis.edu/avian/>
- USDA NASS Chickens and Eggs <http://usda.mannlib.cornell.edu/MannUsda/viewDocumentInfo.do?documentID=1028>
- USDA NASS Poultry Slaughter <http://usda.mannlib.cornell.edu/MannUsda/viewDocumentInfo.do?documentID=1131>
- USDA NASS Egg Products <http://usda.mannlib.cornell.edu/MannUsda/viewDocumentInfo.do?documentID=1057>
- USDA ERS Livestock and Meat Trade Data. <http://www.ers.usda.gov/data/MeatTrade/BroilerTurkeyMonthly.htm>
- USDA FAS <http://www.fas.usda.gov/gats/ExpressQuery1.aspx>
- USDA NASS Cold Storage <http://usda.mannlib.cornell.edu/MannUsda/viewDocumentInfo.do?documentID=1034>
- USDA AMS Poultry Market News and Analysis <http://marketnews.usda.gov/portal/py>

Maro Ibarburu, EIC Business Analyst  
Iowa State University, Ames, IA  
Phone (515) 294-8132  
E-mail: [maro@iastate.edu](mailto:maro@iastate.edu)



Don -  
Thank you for all your contributions to  
this industry. You will be forever missed.  
Your friends at EIC