

U.S. Flock Trends and Projections

FEBRUARY 22, 2016



Compiled by
Maro Ibarburu

Sponsored in part by:



American Egg Board

The Egg Industry Center Market Reports & Industry Analysis are compiled in the memory of their creator, Don D. Bell, Poultry Extension Specialist Emeritus - UC Davis.

U.S. EGG INDUSTRY STATISTICAL REPORT SUMMARY

- * The December hatch (straight-run chicks) was 10.0% higher than in 2014. This projects forward to a 21.3 million pullet placement for May of 2016 which is 3.1 million larger than May of 2015 placement (18.2).
- * Current (December average, 2015) U.S. table egg layer number (286.6 million) is 22.5 million smaller than last year's number at this time (309.1 million), and up 4.3 million compared to last month (282.3 million).
- * In December, Iowa led the nation with 36.7 million laying hens compared to 30.8 million in Ohio, 29.4 million in Indiana, and 23.9 million in Pennsylvania. California (with 11.8 million layers) lost it's 5th position to Texas with 16.4 million layers.
- * The December U.S. rate of lay was estimated to be 77.8% which is 1.8% lower than the December 2014 level (79.6%). The total number of table eggs produced in December 2015 was 9.4% lower than the December 2014 production.
- * The December 2015 number of eggs exported was 62% lower than last year (December 2014) and 34% higher than last month November 2015). The December exports represented 3.1% of the number of eggs produced.
- * Shell eggs broken for products in December 2015 totaled 5.790 million cases, 7.8% less than in December 2014 (6.281 million cases).
- * The egg-type hatchery supply flock is projected to be 11% higher in Jan-Jun 2016 than in Jan-Jun 2015 (table 16).

Monthly Highlights (Compared to December a year ago) (% change) - U.S.

	2014	2015	% Change
Hatch - Egg-Type Straight Run (thousands) (U.S.)	42,980	47,296	10.0
Table Egg Layers (millions) (U.S.)	309.1	286.6	-7.3
Rate of lay (percent)	79.6	77.8	-1.9
Molting (January 1, 2016) (percent in + out of a molt)	20.2	23.7	3.5

Year-end layers (millions) - U.S.

Year	2006	2007	2008	2009	2010	2011	2012	2013	2014	2015	2016
Million	290.6	284.7	285.6	285.2	286.8	290.1	294.6	300.4	304.8	287.6	310.6*

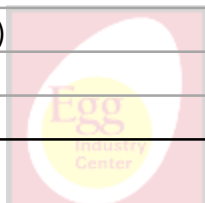
* estimated value



TABLE OF CONTENTS

Table Name	Table #	Page	Sheet or Section
Egg Type: U.S. Eggs In Incubators and Straight Run Hatch	1	3	U.S. Volume
Average U.S. Layers and Table Egg Layers	2	3	U.S. Volume
U.S. All Eggs, Table Eggs and Rate of Lay	3	4	U.S. Volume
Shell Eggs Broken Under Federal Inspection	4	5	U.S. Volume
Per Capita Egg Consumption by Quarter	5	5	U.S. Volume
Induced Molt Percent - U.S. Totals (1st of Month)	6	6	U.S. Volume
Slaughter of Light Fowl	7	6	U.S. Volume
Export of Table Eggs In the Shell In 2015	8	7	Trade
Export of Egg Products In 2015	9	7	Trade
Total Eggs Exported - 2015	10	7	Trade
All Eggs Produced, Including Hatching Eggs, by Region - 2015	11	9	Regional
All Layers by Region, Including Breeders - 2015	12	10	Regional
Table Egg Layers In Flocks 30,000 and Above by Region - 2015	13	10	Regional
Total Molt by Region (Simple Average of Reporting States, %) - 2015	14	10	Regional
Table Egg Layers In Flocks 30,000 and Above In Leading States (Average) - 2015	15	11	Regional
Projected U.S. Egg-Type Hatchery Supply Flock - 2015	16	12	Projections
U.S. Pullets to be Housed Based Upon Hatch 5 Month Ago	17	12	Projections
Projected U.S. Table Egg Flock Less Than 72 Weeks of Age	18	13	Projections
First of the Month Projection Estimates of U.S. Table Egg Layers (millions)	19	14	Projections
Projected vs. Actual First of the Month (U.S. Flock Size) - 2015	20	14	Projections
2015 Bird Flow by Month	21	15	Projected Flock
2015 United States Flock Size Projections	22	16	Previous Projections
Summary to Date	23	19	Final

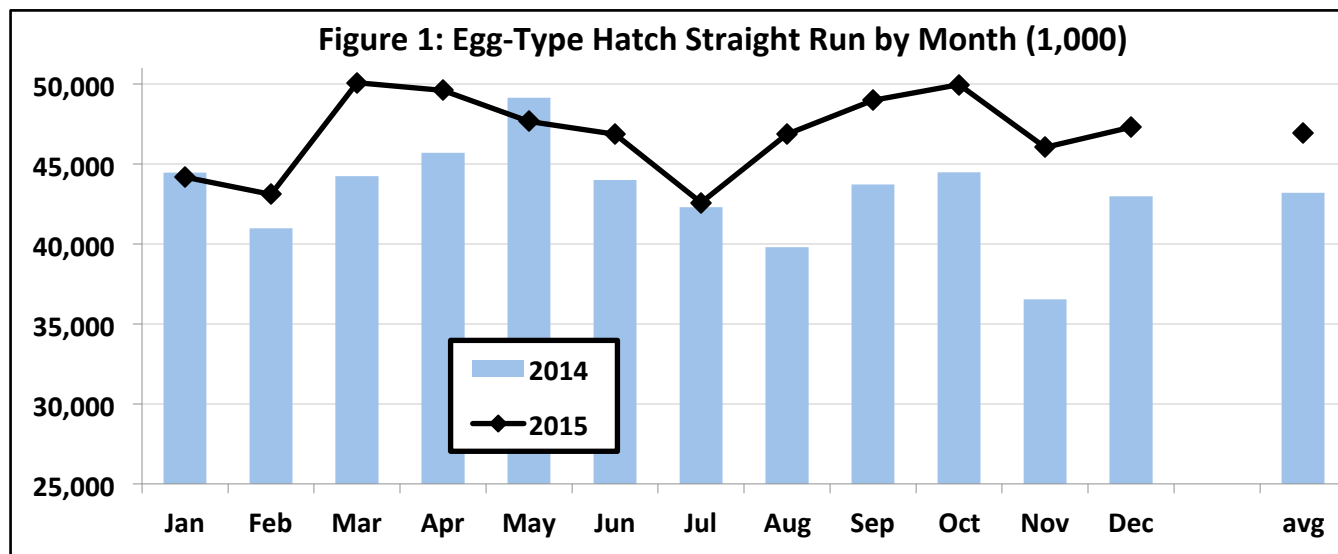
Figure Name	Figure #	Page	Sheet or Section
Egg-Type Hatch Straight Run by Month (1,000)	1	3	U.S. Volume
Table Egg Layers by Month (Millions)	2	4	U.S. Volume
Rate of Lay (Percent)	3	4	U.S. Volume
Shell Eggs Broken for Further Processing by Month (Million cases)	4	5	U.S. Volume
Shell Eggs Broken by Month (Percent of Total Table Eggs)	5	5	U.S. Volume
Monthly Percent Molted	6	6	U.S. Volume
Slaughter of Light Fowl by Month (Millions)	7	6	U.S. Volume
U.S. Egg Exports by Month - 2014 and 2015	8	8	Trade
U.S. Exported Eggs by Month - 2014 and 2015	9	8	Trade
Leading States' Table Egg Layers In Flocks of 30,000 and Above (1988-2014)	10	11	Regional
Percent of U.S. Flock More Than 72 Weeks of Age by Month	11	13	Projections
U.S. Monthly Table-Egg Layers (2002-2015)	12	17	Trends
U.S. Table Eggs per Hen per Day by Month (2002-2015)	13	17	Trends
Monthly Percent of U.S. Flock Molted (2002-2015)	14	17	Trends
U.S. Per Capita Egg Consumption by Year (1913-2015)	15	18	Trends



EGG TYPE: EGGS IN INCUBATORS (on the 1st of the month) and STRAIGHT RUN HATCH (U.S.) **TABLE 1**

EGG-TYPE Eggs in Incubators (thousands)				EGG-TYPE Straight Run Hatch (thousands)			
month	2015	2016	Change (%)	month	2014	2015	Change %
Jan	42,237	47,967	13.6	Jan	44,458	44,174	-0.6
Feb	40,464			Feb	40,986	43,091	5.1
Mar	46,064			Mar	44,233	50,077	13.2
Apr	49,281			Apr	45,703	49,595	8.5
May	47,700			May	49,146	47,652	-3.0
Jun	47,552			Jun	44,006	46,868	6.5
Jul	43,666			Jul	42,297	42,582	0.7
Aug	45,286			Aug	39,803	46,863	17.7
Sep	47,196			Sep	43,722	48,972	12.0
Oct	49,844			Oct	44,468	49,953	12.3
Nov	47,158			Nov	36,544	46,038	26.0
Dec	48,314			Dec	42,980	47,296	10.0
1 Month Avg.	42,237	47,967	13.6	12 Month Avg.	43,196	46,930	8.6
1 Month Total	42,237	47,967		12 Month Total	518,346	563,161	
12 Month Total	554,762			12 Month Total	518,346		

Source: USDA NASS Chickens and Eggs

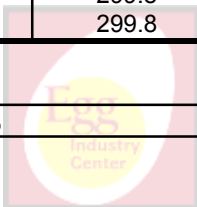


AVERAGE U.S. LAYERS AND TABLE EGG LAYERS 2014/2015 (MILLIONS) **TABLE 2**

month	All Layers			Table Egg Layers			
	2014	2015	Change (%)	2013	2014	2015	Change (%)
Jan	359.6	363.7	1.2	298.7	303.4	306.4	1.0
Feb	359.0	362.3	0.9	299.7	302.7	304.8	0.7
Mar	360.0	362.5	0.7	300.4	303.7	304.6	0.3
Apr	360.8	358.4	-0.7	298.1	304.3	300.0	-1.4
May	360.4	341.6	-5.2	296.6	303.6	283.1	-6.8
Jun	359.7	328.7	-8.6	296.9	303.0	270.3	-10.8
Jul	360.8	329.0	-8.8	297.4	304.2	270.9	-10.9
Aug	361.7	330.9	-8.5	299.4	305.4	272.9	-10.6
Sep	361.8	333.6	-7.8	300.1	306.0	275.9	-9.9
Oct	362.0	336.2	-7.1	301.1	306.3	278.4	-9.1
Nov	364.0	340.5	-6.5	304.5	308.1	282.3	-8.4
Dec	365.7	345.1	-5.6	305.2	309.1	286.6	-7.3
12 Month Avg.	361.3	344.4	-4.7	299.8	305.0	286.4	-6.1
Annual Avg.	361.3			299.8	305.0		

Source: USDA NASS Chickens and Eggs

Table egg layers as a % of all layers to date (2015): 83.2%

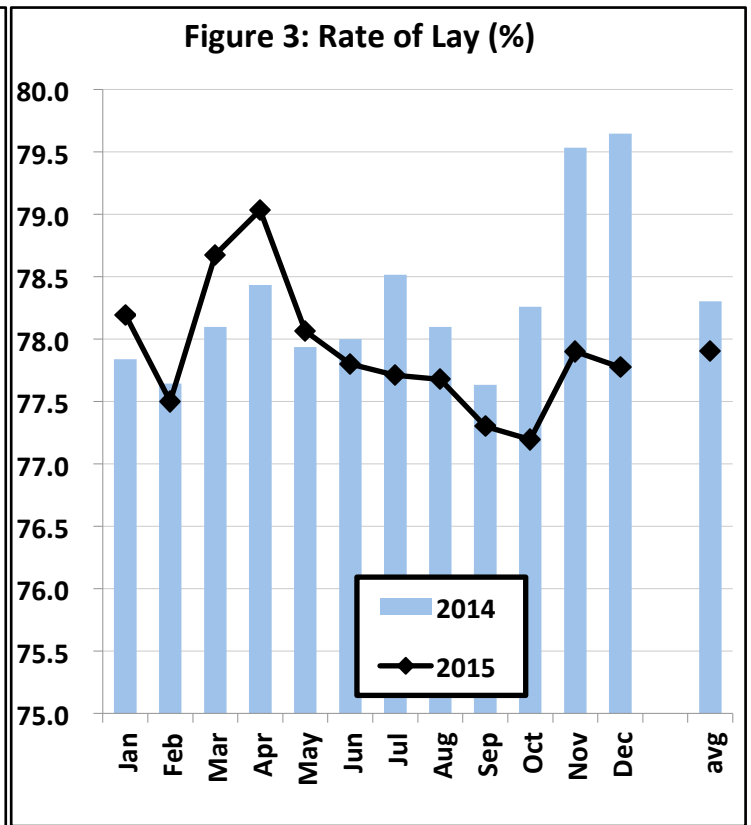
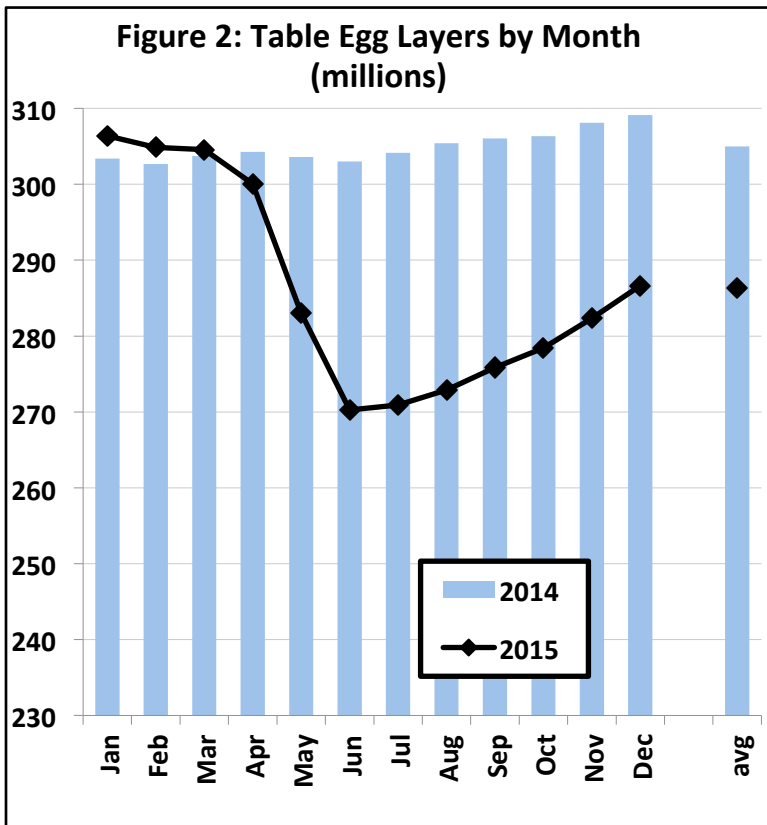


U.S. ALL EGGS, TABLE EGGS AND RATE OF LAY (ALL STATES)

TABLE 3

month	All Eggs (millions)			Table Eggs - human consumption (millions)			Rate of Lay (Table)	
	2014	2015	Change (%)	2014	2015	Change (%)	2014	2015
Jan	8,397	8,540	1.7	7,321	7,428	1.5	77.8	78.2
Feb	7,551	7,620	0.9	6,579	6,615	0.5	77.6	77.5
Mar	8,430	8,548	1.4	7,354	7,429	1.0	78.1	78.7
Apr	8,205	8,209	0.0	7,160	7,113	-0.7	78.4	79.0
May	8,428	7,993	-5.2	7,336	6,851	-6.6	77.9	78.1
Jun	8,151	7,416	-9.0	7,091	6,307	-11.1	78.0	77.8
Jul	8,503	7,674	-9.7	7,404	6,527	-11.8	78.5	77.7
Aug	8,491	7,717	-9.1	7,394	6,571	-11.1	78.1	77.7
Sep	8,186	7,496	-8.4	7,126	6,398	-10.2	77.6	77.3
Oct	8,526	7,793	-8.6	7,433	6,663	-10.4	78.3	77.2
Nov	8,411	7,692	-8.5	7,353	6,597	-10.3	79.5	77.9
Dec	8,731	8,052	-7.8	7,633	6,912	-9.4	79.6	77.8
12 Month Avg.	8,334	7,896	-5.3	7,265	6,784	-6.6	78.3	77.9
Annual Avg.	8,334			7,265			78.3	
Total	100,010	94,750		87,184	81,411			

Source: USDA NASS Chickens and Eggs



SHELL EGGS BROKEN UNDER FEDERAL INSPECTION (MILLION CASES)

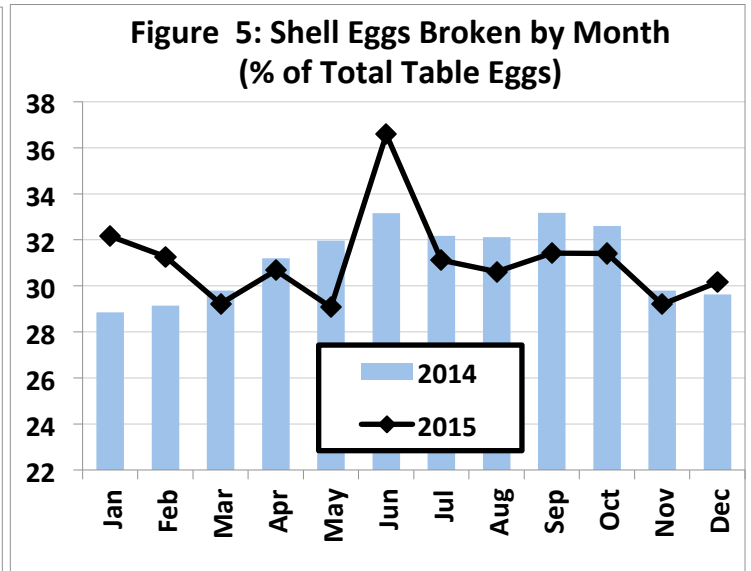
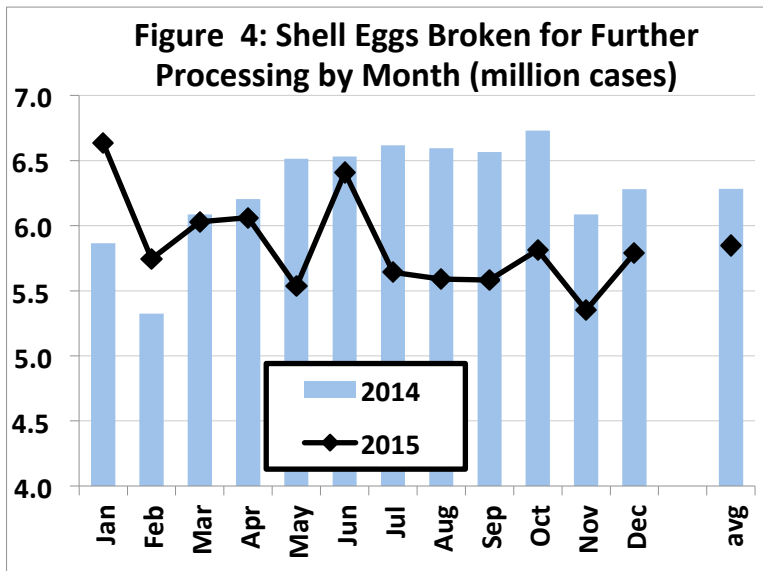
TABLE 4

month	2009	2010	2011	2012	2013	2014	2015	15/14 (%) Change
Jan	5.732	5.268	5.668	5.666	5.765	5.865	6.634	13.1
Feb	5.058	5.013	5.163	5.524	5.374	5.325	5.746	7.9
Mar	5.423	5.504	6.008	5.715	5.831	6.086	6.030	-0.9
Apr	5.900	5.714	5.464	5.634	5.950	6.205	6.061	-2.3
May	5.933	5.727	5.838	6.057	5.820	6.514	5.533	-15.1
Jun	5.612	6.206	6.167	5.955	6.118	6.532	6.408	-1.9
Jul	6.098	5.977	5.988	5.748	6.266	6.618	5.641	-14.8
Aug	5.681	5.884	6.061	6.523	6.200	6.596	5.589	-15.3
Sep	5.974	6.582	5.869	6.005	6.040	6.566	5.583	-15.0
Oct	6.105	5.842	5.805	6.109	6.289	6.731	5.814	-13.6
Nov	5.320	5.445	5.786	5.577	5.738	6.086	5.350	-12.1
Dec	5.424	5.891	5.615	5.964	5.745	6.281	5.790	-7.8
12 Month Avg.	5.688	5.754	5.786	5.873	5.928	6.284	5.848	-6.9
12 Month Total	68.260	69.054	69.431	70.477	71.136	75.405	70.179	
12 Month Total	68.260	69.054	69.431	70.477	71.136	75.405		

Source: USDA NASS Egg products - monthly

Million Cases Produced
% BROKEN

219.144	221.728	228.286	235.956	242.178	226.142
31.5	31.3	30.9	30.1	31.1	31.0



PER CAPITA EGG CONSUMPTION BY QUARTER

TABLE 5

QUARTER	2009	2010	2011	2012	2013	2014	2015	2016*
1	62.0	61.8	61.3	63.2	64.3	64.7	64.4	63.2
2	61.5	61.9	61.5	62.2	63.4	65.3	61.5	63.3
3	61.4	62.5	62.8	63.3	64.7	66.3	60.4	64.1
4	62.9	63.1	64.3	65.6	66.0	66.7	63.9	66.1
Total	247.7	249.3	249.9	254.3	258.4	263.0	250.1	256.6

Change from previous year (eggs)

1.6	0.6	4.4	4.1	4.6	-12.9	6.5
-----	-----	-----	-----	-----	-------	-----

Source: USDA ERS Livestock and Meat Trade Data.

* Estimates for 2016 (1/2016)

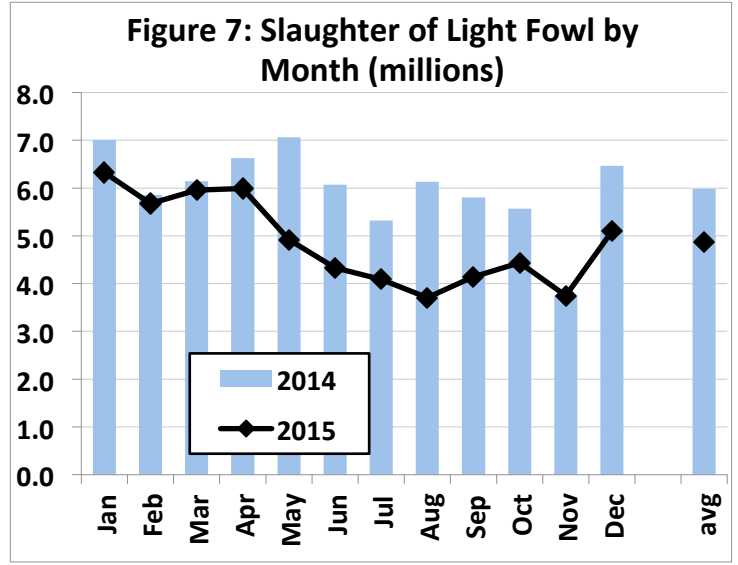
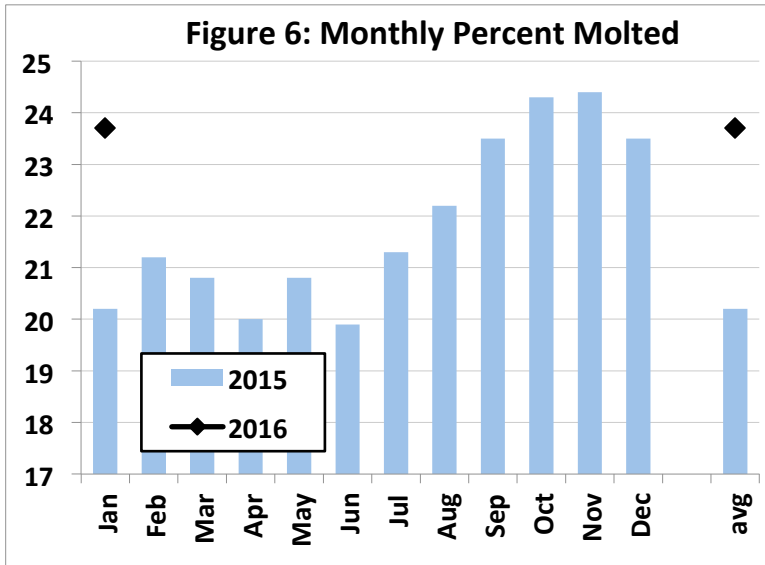


INDUCED MOLT PERCENT - U.S. TOTALS (1ST OF MONTH)

TABLE 6

month	In a Molt			Completed a Molt		Total		
	2015	2016	Change	2015	2016	2015	2016	Change
Jan	2.1	2.5	0.4	18.1	21.2	20.2	23.7	3.5
Feb	3.3			17.9		21.2		
Mar	1.9			18.9		20.8		
Apr	2.0			18.0		20.0		
May	3.1			17.7		20.8		
Jun	2.4			17.5		19.9		
Jul	2.9			18.4		21.3		
Aug	2.7			19.5		22.2		
Sep	3.4			20.1		23.5		
Oct	3.4			20.9		24.3		
Nov	3.2			21.2		24.4		
Dec	1.7			21.8		23.5		
1 Month Avg.	2.1	2.5	0.4	18.1	21.2	20.2	23.7	3.5
12 Month Avg.	2.7			19.2		21.8		

Source: USDA NASS Chickens and Eggs

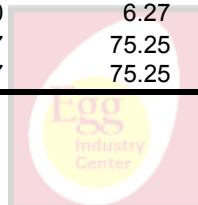


SLAUGHTER OF LIGHT FOWL (MILLIONS)

TABLE 7

month	2009	2010	2011	2012	2013	2014	2015	6 YR (09-14) Month Avg.
Jan	6.33	5.80	5.90	6.98	7.63	7.01	6.33	6.61
Feb	5.36	5.22	5.59	5.57	6.20	5.86	5.68	5.63
Mar	6.32	6.50	6.56	7.15	6.49	6.15	5.96	6.53
Apr	6.58	6.59	5.99	7.95	8.31	6.63	5.99	7.01
May	6.32	5.78	6.42	7.91	7.21	7.06	4.92	6.78
Jun	6.36	5.88	5.30	6.25	5.40	6.07	4.33	5.88
Jul	5.94	5.42	5.00	4.45	5.60	5.32	4.09	5.29
Aug	5.46	5.64	5.85	6.00	6.81	6.13	3.71	5.98
Sep	5.20	6.12	5.68	5.39	5.50	5.80	4.14	5.61
Oct	5.85	5.01	5.56	5.60	5.73	5.57	4.44	5.55
Nov	4.44	4.07	4.92	5.12	3.59	3.75	3.75	4.31
Dec	5.53	5.63	5.60	6.89	6.45	6.47	5.10	6.09
12 Month Avg.	5.81	5.64	5.70	6.27	6.24	5.98	4.87	5.94
12 Month Total	69.68	67.66	68.37	75.25	74.92	71.80	58.42	71.28
12 Month Total	69.68	67.66	68.37	75.25	74.92	71.80		71.28

Source: USDA NASS Poultry Slaughter



EXPORT OF TABLE EGGS IN THE SHELL IN 2015 (Thousand cases- 30 doz)

TABLE 8

Month \ To	North America	Central America	Caribbean	European Union-28	East Asia	Southeast Asia	Middle East	Total 2015	Total 2014	% of U.S. Production
Jan	300.6	0.0	17.8	9.1	126.0	0.3	8.8	468.2	293.2	2.27
Feb	356.7	0.0	22.5	6.4	92.7	0.0	6.8	491.3	361.9	2.67
Mar	401.9	0.0	9.6	4.9	97.4	0.0	7.2	525.8	351.7	2.55
Apr	426.1	0.0	10.4	1.8	92.4	0.0	3.8	540.0	414.0	2.73
May	258.8	0.0	6.2	0.1	80.4	0.0	2.3	352.5	546.2	1.85
Jun	268.0	0.0	10.0	0.1	40.8	0.0	0.0	322.4	418.7	1.84
Jul	254.2	0.0	8.0	0.3	57.7	0.0	0.0	321.8	584.5	1.78
Aug	351.9	0.0	14.2	0.1	53.6	0.0	0.0	421.7	543.5	2.31
Sep	230.9	0.3	11.5	0.1	57.5	0.0	0.0	305.7	452.4	1.72
Oct	244.6	0.0	10.1	0.0	68.3	0.0	0.0	328.1	612.3	1.77
Nov	206.1	0.0	9.9	0.1	60.1	0.0	0.0	279.3	616.7	1.52
Dec	181.0	0.0	14.1	0.0	62.7	0.0	0.0	262.2	974.5	1.37
12 Mo. Total	3,480.6	0.3	144.2	23.1	889.5	0.3	28.9	4,618.9	6,169.5	2.03
%	75.4	0.0	3.1	0.5	19.3	0.0	0.6			

Source: USDA Foreign Agric. Service from U.S. Dept. of Commerce, U.S. Census Bureau, Foreign Trade Stats

EXPORT OF EGG PRODUCTS IN 2015 (EQUIVALENT: thousand cases- 30 doz)

TABLE 9

Month \ To	North America	Central America	Caribbean	European Union-28	East Asia	Southeast Asia	Middle East	Total 2015	Total 2014	% of U.S. Production
Jan	208.0	8.8	6.5	118.0	132.6	14.0	8.3	517.3	516.4	2.51
Feb	194.9	8.0	5.5	58.0	114.9	11.9	2.9	436.1	518.2	2.37
Mar	184.4	27.0	10.2	96.4	110.9	13.3	13.4	463.9	504.8	2.25
Apr	209.6	9.4	6.1	36.1	124.2	5.1	3.8	402.1	488.7	2.04
May	153.5	2.4	5.3	43.6	119.6	24.9	9.6	385.0	428.7	2.02
Jun	94.5	6.0	2.3	29.1	48.0	11.9	0.7	194.7	519.6	1.11
Jul	88.5	3.9	2.8	21.4	38.9	12.8	14.1	194.3	396.5	1.07
Aug	148.6	2.1	9.3	40.0	42.4	8.5	0.2	254.1	472.9	1.39
Sep	204.8	5.3	2.4	6.0	59.5	15.9	0.0	297.5	514.7	1.67
Oct	88.3	1.1	6.6	30.8	83.4	0.5	0.0	211.7	516.4	1.14
Nov	72.7	0.1	3.4	2.3	66.2	8.4	2.1	157.0	425.4	0.86
Dec	167.6	10.1	4.1	83.8	47.4	10.4	0.4	324.1	582.5	1.69
12 Mo. Total	1,815.5	84.1	64.6	565.5	988.1	137.5	55.6	3,837.9	5,884.7	1.68
%	47.3	2.2	1.7	14.7	25.7	3.6	1.4			

Converted from metric tonnes at a rate of one metric tonne equals approximately 52.4 thirty dozen cases.

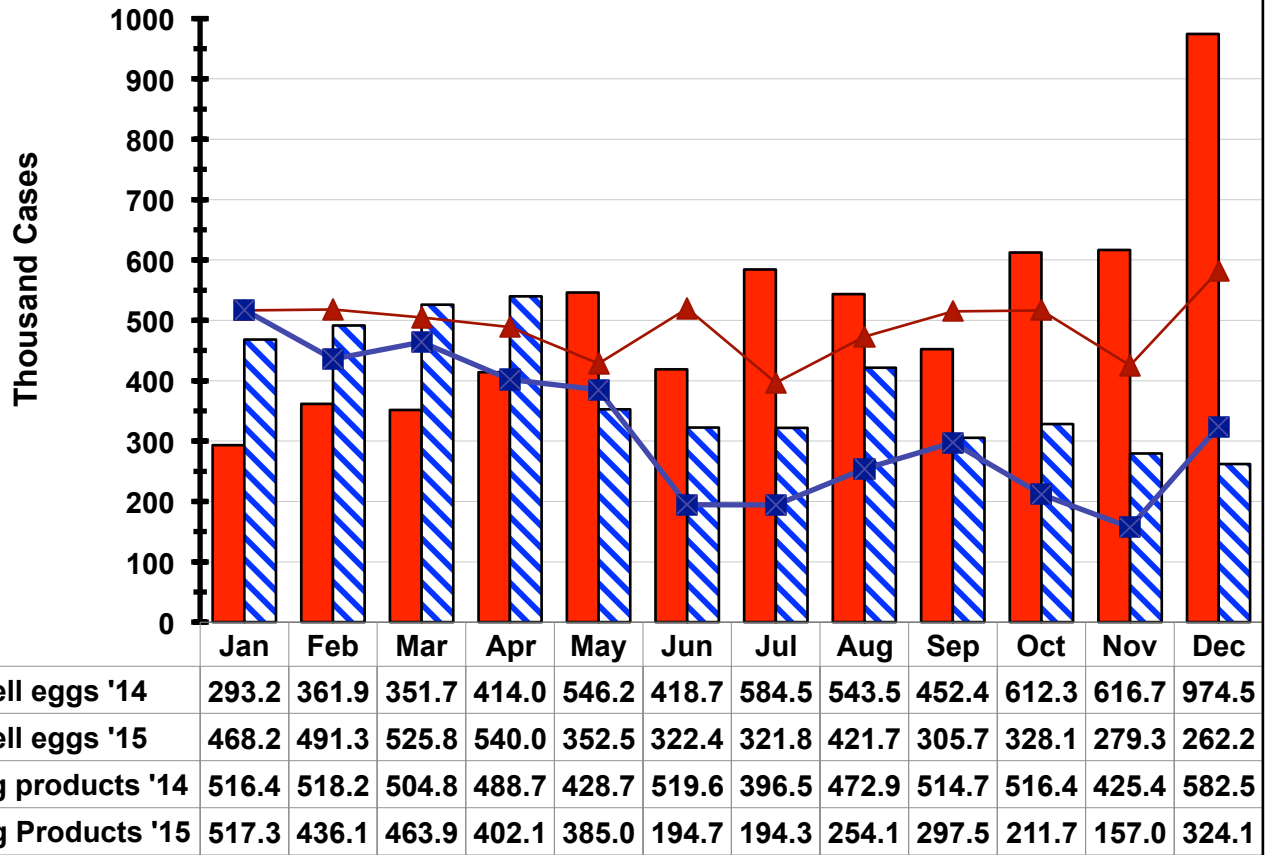
Source: USDA Economic Research Service from U.S. Dept. of Commerce, U.S. Census Bureau, Foreign Trade Stats.

TOTAL EGGS EXPORTED - 2015

TABLE 10

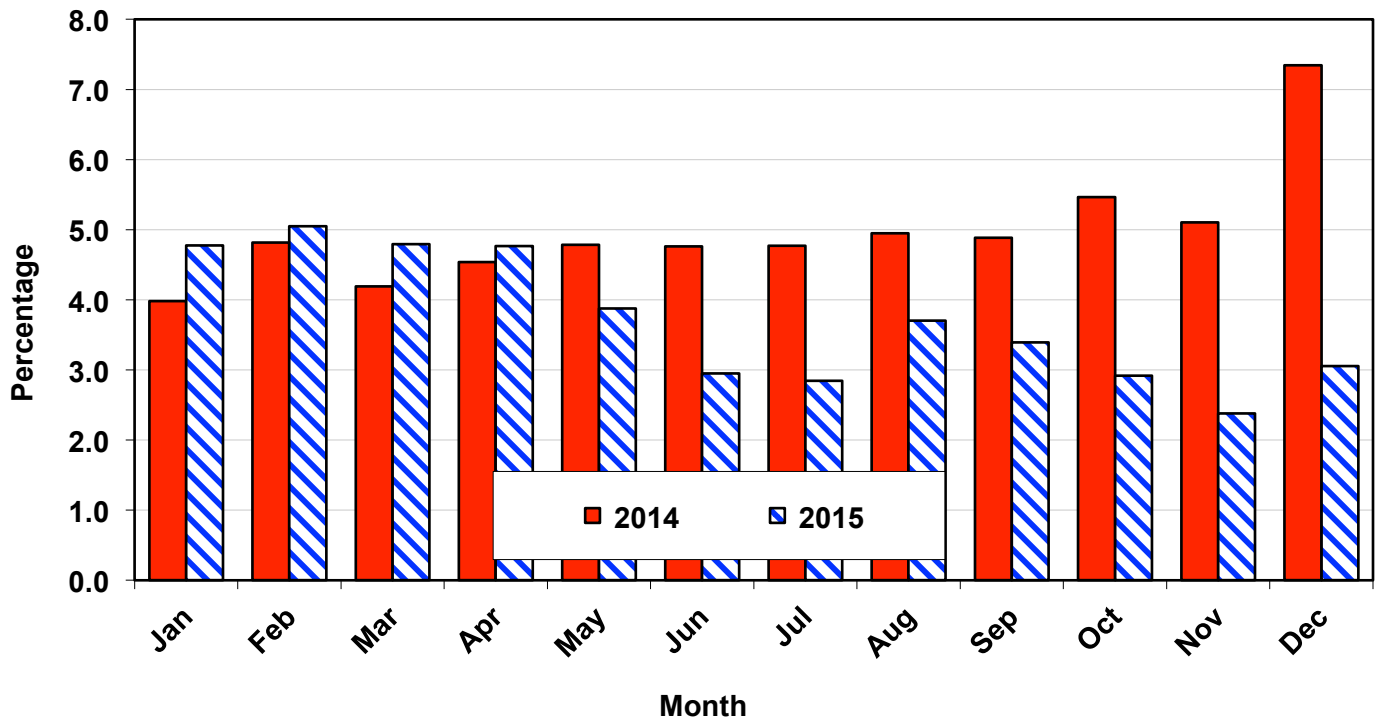
	Table Eggs Produced		Table Eggs Exported		Egg Products Exported		Total Exported	
	(000) Cases		Cases	% of U.S.	Cases	% of U.S.	Cases	% of U.S.
Jan	20,633		468.2	2.27	517.3	2.51	985.4	4.78
Feb	18,375		491.3	2.67	436.1	2.37	927.4	5.05
Mar	20,636		525.8	2.55	463.9	2.25	989.7	4.80
Apr	19,758		540.0	2.73	402.1	2.04	942.1	4.77
May	19,031		352.5	1.85	385.0	2.02	737.5	3.88
Jun	17,519		322.4	1.84	194.7	1.11	517.1	2.95
Jul	18,131		321.8	1.78	194.3	1.07	516.1	2.85
Aug	18,253		421.7	2.31	254.1	1.39	675.8	3.70
Sep	17,772		305.7	1.72	297.5	1.67	603.2	3.39
Oct	18,508		328.1	1.77	211.7	1.14	539.8	2.92
Nov	18,325		279.3	1.52	157.0	0.86	436.3	2.38
Dec	19,200		262.2	1.37	324.1	1.69	586.3	3.05
Total/Av	226,142		4,618.9	2.04	3,837.9	1.70	8,456.7	3.74

Figure 8: U.S. Egg Exports by Month - 2014 and 2015



Note: Information has been converted from metric tonnes at a rate of 42 lbs. per case of liquid egg (edible + inedibles).

**Figure 9: Exported Eggs by Month - 2014 and 2015
(percentage of eggs produced)**



ALL EGGS PRODUCED, INCLUDING HATCHING EGGS, BY REGION (Million) - 2015

TABLE 11

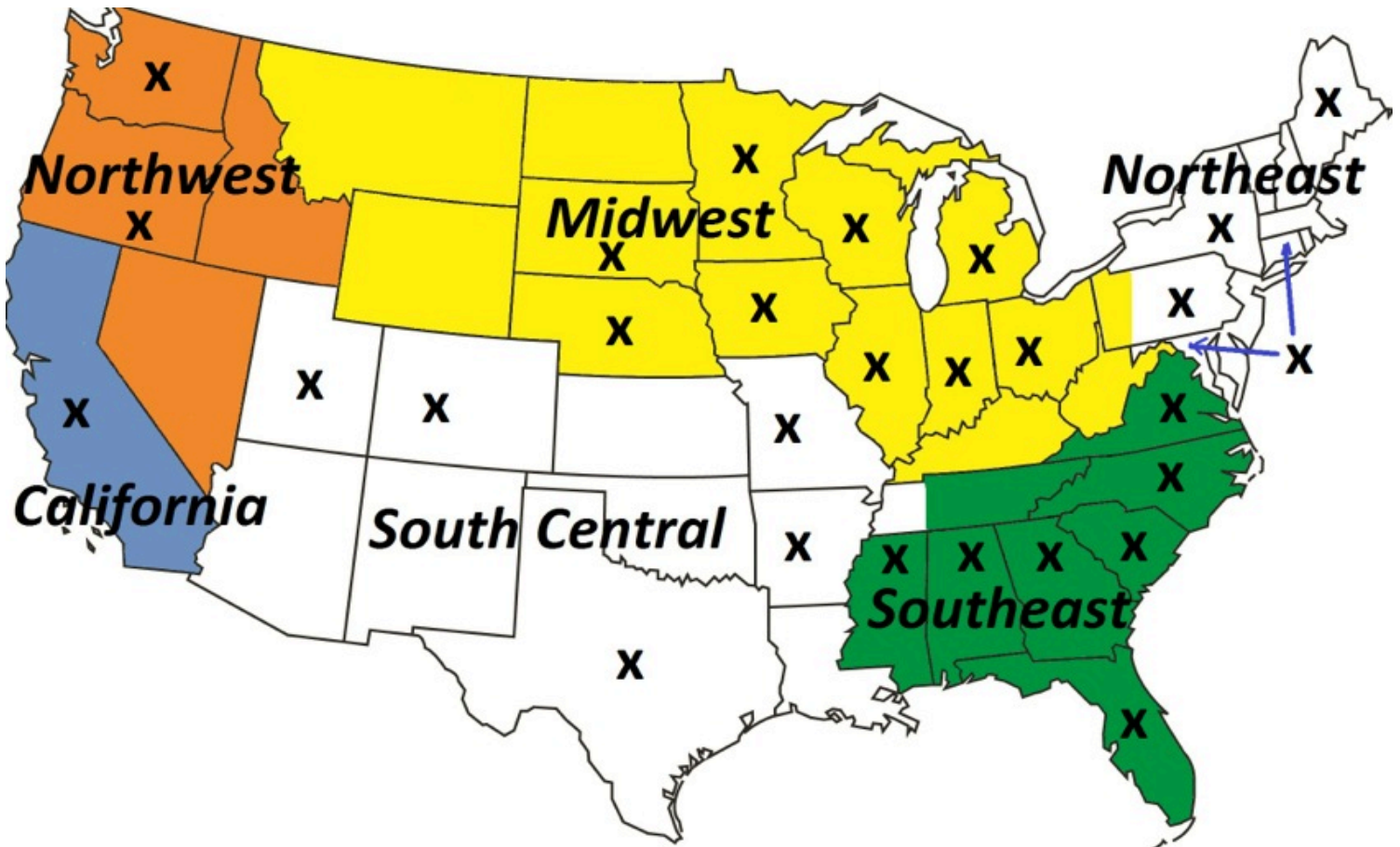
month	Northeast*	Southeast	South Central	Midwest	Northwest	California	U.S. Total
Jan	1,002	1,395	1,006	3,969	242	313	8,540
Feb	894	1,253	897	3,535	213	287	7,620
Mar	859	1,410	1,022	3,959	240	320	8,548
Apr	827	1,348	998	3,776	232	311	8,209
May	838	1,379	1,013	3,466	232	323	7,993
Jun	810	1,347	971	3,028	231	305	7,416
Jul	839	1,390	1,020	3,115	245	310	7,674
Aug	844	1,388	1,031	3,143	245	314	7,717
Sep	820	1,357	982	3,067	234	309	7,496
Oct	843	1,408	1,024	3,226	242	303	7,793
Nov	831	1,388	1,040	3,199	233	275	7,692
Dec	866	1,461	1,109	3,342	232	289	8,052
12 Month Avg.	856	1,377	1,009	3,402	235	305	7,896
% of total	10.8	17.4	12.8	43.1	3.0	3.9	

Source: USDA NASS Chickens and Eggs

Note: All States are not represented (see map below)

* The drop in the Northeast region number is mostly explained by not having a count for CT and ME for the period after March

Map of U.S. Regions, as defined by Uner Barry, and the location of information used in this report



Notes

The x's mark the States where there is USDA data available on number of layers, egg production and percent molt.

Northwest is the sum of OR and WA

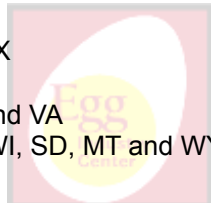
South Central is the sum of AR, UT, CO, MO and TX

Northeast is the sum of CT, MD, ME, NY and PA

Southeast is the sum of AL, FL, GA, MS, NC, SC and VA

Midwest is the sum of IA, IL, IN, MI, MN, NE, OH, WI, SD, MT and WY

California is the state of California only



ALL LAYERS BY REGION, INCLUDING BREEDERS (Million) - 2015

TABLE 12

month	Northeast*	Southeast	South Central	Midwest	Northwest	California	U.S. Total
Jan	39.9	64.7	45.1	164.5	9.7	13.4	363.7
Feb	39.5	64.6	44.7	164.2	9.6	13.3	362.3
Mar	33.3	65.2	45.0	164.0	9.6	13.2	362.5
Apr	32.9	64.9	45.4	160.4	9.4	13.2	358.4
May	32.8	64.4	45.1	144.6	9.2	13.3	341.6
Jun	33.1	64.7	44.8	130.5	9.6	13.5	328.7
Jul	33.3	64.6	45.3	130.0	9.8	13.5	329.0
Aug	33.5	64.3	46.1	131.7	9.5	13.4	330.9
Sep	33.7	64.6	46.3	133.5	9.4	13.5	333.6
Oct	33.6	65.2	46.0	135.4	9.5	13.7	336.2
Nov	34.1	65.6	48.0	138.4	9.6	12.2	340.5
Dec	34.6	65.9	48.5	141.8	9.4	12.3	345.1
12 Month Avg.	34.5	64.9	45.9	144.9	9.5	13.2	344.4
% of total	10.0	18.8	13.3	42.1	2.8	3.8	

Source: USDA NASS Chickens and Eggs

* The drop in the Northeast region number is mostly explained by not having a count for CT and ME for the period after March

TABLE EGG LAYERS IN FLOCKS OF 30,000 AND ABOVE BY REGION (Million) - 2015

TABLE 13

month	Northeast*	Southeast	South Central	Midwest	Northwest	California	U.S. Total
Jan	37.1	32.8	29.3	159.3	9.4	12.9	298.3
Feb	36.7	32.6	28.9	159.1	9.3	12.8	296.8
Mar	30.7	32.9	29.1	158.8	9.3	12.7	296.5
Apr	30.4	32.2	29.4	155.2	9.1	12.7	292.0
May	30.3	31.4	29.0	139.5	8.9	12.8	275.0
Jun	30.7	31.9	28.8	125.3	9.3	13.0	262.2
Jul	30.8	32.2	29.2	124.9	9.5	13.0	262.8
Aug	31.1	32.1	29.9	126.6	9.2	12.9	264.8
Sep	31.3	32.4	30.3	128.4	9.1	12.9	267.8
Oct	31.1	32.9	30.6	130.5	9.3	12.5	270.3
Nov	31.4	33.4	31.6	133.2	9.3	11.7	274.3
Dec	31.9	33.5	32.1	136.7	9.1	11.8	278.6
12 Month Avg.	32.0	32.5	29.9	139.8	9.2	12.7	278.3
% of total	11.5	11.7	10.7	50.2	3.3	4.5	
Table/total layers (%)	92.6%	50.1%	65.1%	96.5%	96.8%	95.8%	80.8%

Source: USDA NASS Chickens and Eggs

* The drop in the Northeast region number is mostly explained by not having a count for CT and ME for the period after March

TOTAL MOLT (in-molt plus post-molt) BY REGION (Simple average of reporting States, %) - 2015

month	Northeast*	Southeast	South Central	Midwest	Northwest	California	regions
Jan	4.0	21.6	23.5	18.9	21.3	33.0	20.4
Feb							
Mar							
Apr							
May							
Jun							
Jul							
Aug							
Sep							
Oct							
Nov							
Dec							
1 Month Avg.	4.0	21.6	23.5	18.9	21.3	33.0	20.4
year 2014 avg.	6.5	17.0	20.7	20.0	30.7	30.7	19.0

Source: USDA NASS Chickens and Eggs

* The drop in the Northeast region number is mostly explained by not having a count for CT and ME for the period after March

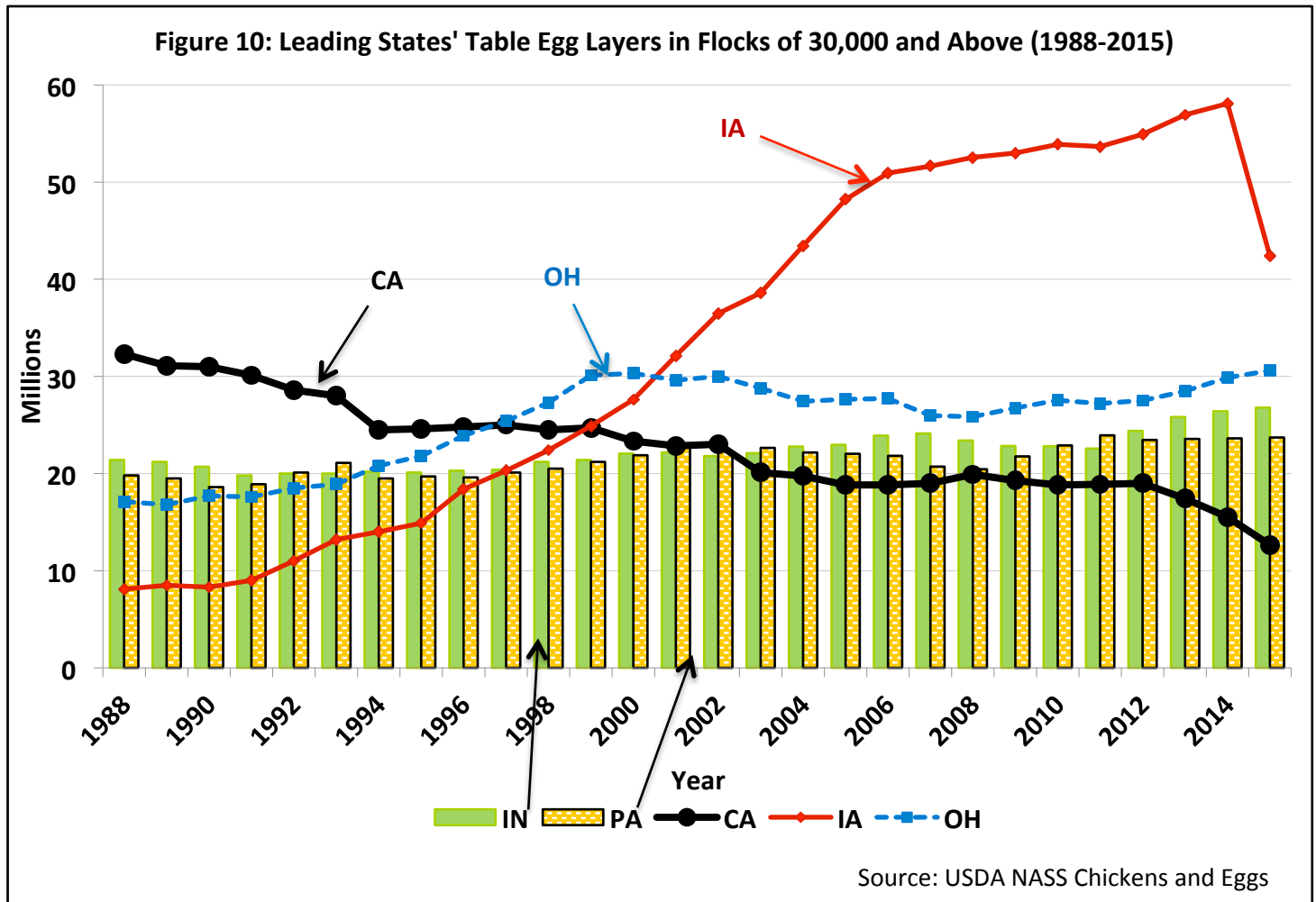
Note: average molt is estimated as the simple average of the reported States

TABLE EGG LAYERS IN LEADING STATES - (LAYERS IN 30,000+ HEN FLOCKS) - 2015

TABLE 15

month	IA	OH	IN	PA	CA	TX	U.S.
Dec-2014	58.74	30.20	26.12	24.09	13.58	15.10	301.04
			(Millions)				
Jan-2015	58.49	29.69	25.89	23.99	12.88	14.89	298.32
Feb-2015	58.33	29.94	25.74	23.66	12.84	14.76	296.76
Mar-2015	58.23	30.28	25.42	23.62	12.72	14.79	296.51
Apr-2015	54.88	30.83	25.20	23.56	12.73	14.85	291.96
May-2015	43.01	30.82	25.56	23.40	12.77	14.93	274.99
Jun-2015	33.24	30.53	25.67	23.63	12.95	15.04	262.18
Jul-2015	32.45	30.93	25.92	23.73	13.04	15.36	262.83
Aug-2015	32.60	30.83	26.90	23.75	12.92	15.61	264.83
Sep-2015	32.93	30.72	27.98	23.92	12.94	15.64	267.78
Oct-2015	33.37	30.93	28.66	23.68	12.47	15.73	270.35
Nov-2015	34.46	30.95	29.10	23.67	11.75	16.05	274.27
Dec-2015	36.73	30.79	29.36	23.86	11.82	16.37	278.59
12 Month Avg.	42.39	30.60	26.78	23.71	12.65	15.33	278.28
					% of all U.S. table egg layers		97.2

Source: USDA NASS Chickens and Eggs



PROJECTED U.S. EGG-TYPE HATCHERY SUPPLY FLOCK (Millions)

TABLE 16

month	2010	2011	2012	2013	2014	2015	2016
Jan	2.730	3.087	2.706	2.791	2.436	2.608	2.797
Feb	2.716	3.123	2.659	2.830	2.515	2.535	2.797
Mar	2.745	3.108	2.653	2.786	2.503	2.553	2.857
Apr	2.785	3.039	2.703	2.786	2.468	2.610	2.958
May	2.828	2.998	2.672	2.649	2.555	2.619	2.937
Jun	2.910	2.996	2.657	2.745	2.476	2.664	2.947
Jul	2.999	2.883	2.672	2.579	2.540	2.682	
Aug	3.010	2.848	2.731	2.613	2.536	2.689	
Sep	3.019	2.877	2.732	2.630	2.472	2.605	
Oct	3.023	2.779	2.819	2.588	2.530	2.718	
Nov	2.998	2.755	2.778	2.515	2.497	2.917	
Dec	3.099	2.713	2.791	2.537	2.439	2.892	
6 month avg.	2.786	3.059	2.675	2.764	2.492	2.598	2.882
12 month avg.	2.905	2.934	2.714	2.671	2.497	2.674	

Source: USDA NASS Chickens and Eggs

Note: The hatchery supply flock estimates are made by using 7 to 18 months prior hatch minus 9% mortality

PULLETS TO BE HOUSED BASED UPON U.S. HATCH 5 MONTH AGO (Millions)

TABLE 17

(47.5% of CHICKS PLACED multiplied by a 95% LIVABILITY FACTOR)

month	2011	2012	2013	2014	2015	2016	2011 to '15 month avg.
Jan	16.7	18.7	17.3	17.5	18.0	21.1	17.6
Feb	18.1	18.0	17.3	19.0	19.7	22.1	18.4
Mar	18.6	17.0	17.1	19.2	20.1	22.5	18.4
Apr	17.5	16.9	16.5	18.9	16.5	20.8	17.3
May	17.0	17.6	18.5	18.6	18.2	21.3	18.0
Jun	18.3	18.6	19.8	20.1	18.7		19.1
Jul	16.9	18.3	19.1	18.5	18.2		18.2
Aug	19.7	19.4	19.7	20.0	21.4		20.0
Sep	19.4	19.5	20.8	20.6	21.2		20.3
Oct	19.4	20.1	22.6	22.2	21.5		21.2
Nov	17.6	17.5	19.1	19.9	21.1		19.0
Dec	16.7	16.2	18.0	19.1	19.2		17.8
5 month avg.	17.6	17.6	17.3	18.6	18.5	21.6	17.9
Annual Avg.	18.0	18.2	18.8	19.5	19.5		18.8
Total	215.9	217.9	225.6	233.4	233.9		225.3

Source: USDA NASS Chickens and Eggs

% Change to date

16.73

Note: The number of pullets to be housed was reduced by 6 million based on the number reported as lost to avian influenza. We assumed the reduction as evenly spread during the period between May and September 2015 (assuming that the ages of affected birds was evenly distributed).



PROJECTED U.S. TABLE EGG FLOCK LESS THAN 72 WEEKS OF AGE (Millions)

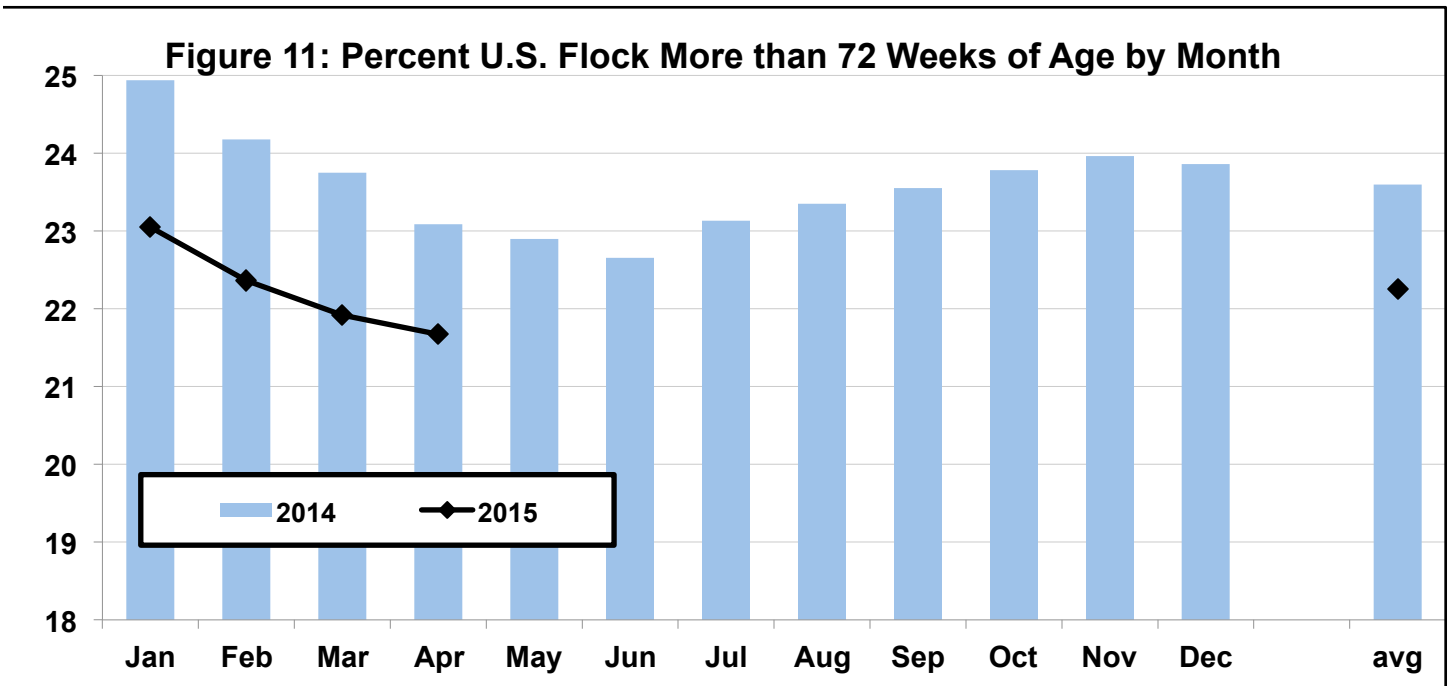
TABLE 18

month	Number				% of National Flock over 72 wks.		
	2012	2013	2014	2015	2013	2014	2015
Jan	219.7	220.1	227.7	235.8	26.3	24.9	23.1
Feb	219.6	219.4	229.5	236.5	26.8	24.2	22.4
Mar	217.9	219.6	231.6	237.4	26.9	23.7	21.9
Apr	217.3	219.1	234.0	235.0	26.5	23.1	21.7
May	217.9	220.0	234.1	*	25.8	22.9	
Jun	218.2	221.1	234.4	*	25.5	22.7	
Jul	219.6	221.9	233.8	*	25.4	23.1	
Aug	219.4	222.1	234.1	*	25.8	23.4	
Sep	219.5	223.4	234.0	*	25.6	23.6	
Oct	220.2	226.0	233.5	*	25.0	23.8	
Nov	220.2	227.5	234.3	*	25.3	24.0	
Dec	219.7	229.3	235.4	*	24.9	23.9	
4 month avg.	218.6	221.8	232.8	237.8			
4 month avg.					26.6	24.0	22.3
12 month avg.	219.1	222.5	233.0		25.8	23.6	

Source: Egg Industry Center based on USDA NASS Chickens and Eggs data

Note: The number of layers younger than 72 weeks of age are estimated as the sum of the Egg-Type Chicks Hatched between 5 and 17 months before adjusted by a 9% loss

* Special note: A special adjustment to this calculation will be needed as a result of the avian influenza outbreak, but it will depend on some assumptions about the ages of the layers affected.



FLOCK SIZE PROJECTION

The U.S. flock size is projected for the current year and the following year for each month. Projections start with the first of the month official USDA count and are then adjusted monthly. Adjustments are made considering the most recent:

1. Hatch data (projected 5-months into the future with mortality). Subsequent hatches are based upon 6-year percentage trends for each month.
2. USDA slaughter data and estimates based upon 6-year trends for subsequent months.
3. Missing estimates are included for on-farm slaughter, died, exports, etc. This data is expressed as a percentage of each month's beginning count based upon recent history.

TABLE 19 _

First of the Month Projection Estimates of U.S. Table Egg Layers (millions)

Actual	Projected	Projected	Projected	Projected	Projected	Projected	Projected	Projected	Projected	Projected	Projected
2016	2016	2016	2016	2016	2016	2016	2016	2016	2016	2016	2016
Jan	Feb	Mar	Apr	May	Jun	Jul	Aug	Sep	Oct	Nov	Dec
288.1	290.8	295.2	300.1	300.9	302.9	302.6	303.3	305.3	306.0	308.3	311.5
Project. Year end:						Dec, 2016 - 310.6					

The avian influenza outbreak created a large reduction on the U.S. flock; therefore, we expect our flock projections to be a lot less accurate than normal until the situation stabilizes. To be able to approximate a projection we assumed that:

- the age of the 6 million pullets lost to AI were evenly distributed
- the percent of the flock culled (slaughter, died or missing) by month stays the same
- producers find a place where to house the pullets grown (based on the 5 month before hatch)

U.S. FLOCK SIZE PROJECTED VS. ACTUAL (1st OF THE MONTH) - 2016 (Millions)

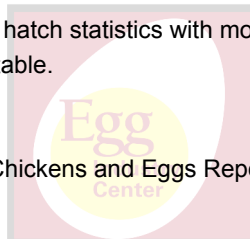
TABLE 20 _

Projected on Jan. 31, 2016 (EIC). Not changed during the year.

Month	Beginning count		Replacements		Slaughter	
	Projected	Actual	Projected	Actual	Projected	Actual
Jan	288.1	288.1	21.1	21.1	6.4	
Feb	290.8		22.1	22.1	5.5	
Mar	295.2		22.5	22.5	6.4	
Apr	300.1		20.8	20.8	6.9	
May	300.9		22.2	21.3	6.8	
Jun	302.9		22.0		6.4	
Jul	302.6		18.6		5.7	
Aug	303.3		20.9		6.2	
Sep	305.3		20.8		5.8	
Oct	306.0		21.1		5.8	
Nov	308.3		19.8		4.9	
Dec	311.5		18.1		6.3	
Current avg	288.1	288.1	21.7	21.6		

1. Note: Projections are based upon USDA data and are updated monthly.
2. Please note: The above projections are updated monthly. The current projections are shown in Table 19.
3. Projected = Egg Industry Center
4. Actual = Chickens and Eggs Report - USDA NASS
5. USDA replacements are projected ahead from previous hatch statistics with mortality and placement adjustments.
6. Mortality and missing birds are not shown in the above table.

NOTE: the projections in table 20 were made before the USDA Chickens and Eggs Report adjustment and before the avian influenza outbreak.



2016 United States Flock Size Projections

Table 22

For January 2016

USDA preliminary
Actual count

Estimated number of U.S. table egg layers (million) on the 1st of each month

Estimated For Month	Estimated: December 2015	2015	Month Number of Layers Projected for 2016/2017											
		Jan	Feb	Mar	Apr	May	June	July	Aug	Sept	Oct	Nov	Dec	
Jan-16	284.8	288.1												
Feb-16	287.7	290.8												
Mar-16	292.3	295.2												
Apr-16	297.4	300.1												
May-16	298.4	300.9												
Jun-16	301.3	302.9												
Jul-16	301.2	302.6												
Aug-16	301.9	303.3												
Sep-16	304.0	305.3												
Oct-16	304.8	306.0												
Nov-16	307.2	308.3												
Dec-16	310.5	311.5												
Jan-17		310.6												
Feb-17														
Mar-17														
Apr-17														
May-17														
Jun-17														
Jul-17														
Aug-17														
Sep-17														
Oct-17														
Nov-17														
Dec-17														

THIS IS A NEW PAGE TO VISUALIZE CHANGES IN FLOCK PROJECTIONS AS THE YEAR EVOLVES

* Note: projection cancelled temporarily because of the avian influenza outbreak



Figure 12: U.S. Monthly Table-Egg Layers (2005-2015)

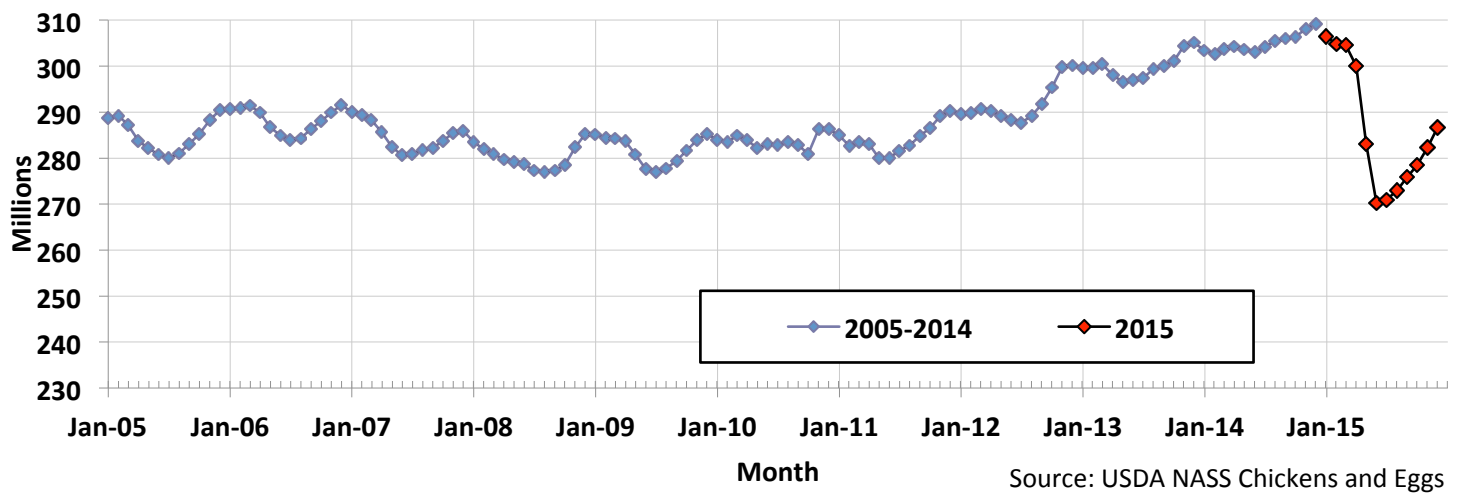


Figure 13: U.S. Table Eggs per Hundred Hens per Day by Month (2005-2015)

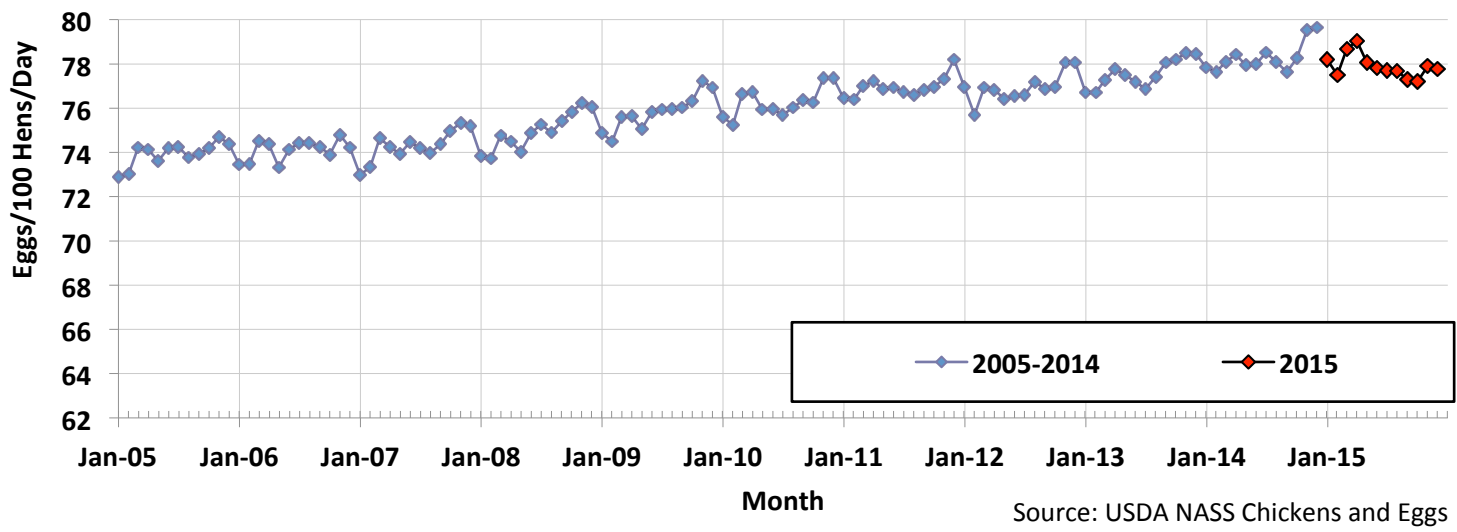


Figure 14: Monthly Percent of U.S. Flock Molted (2005-2015)

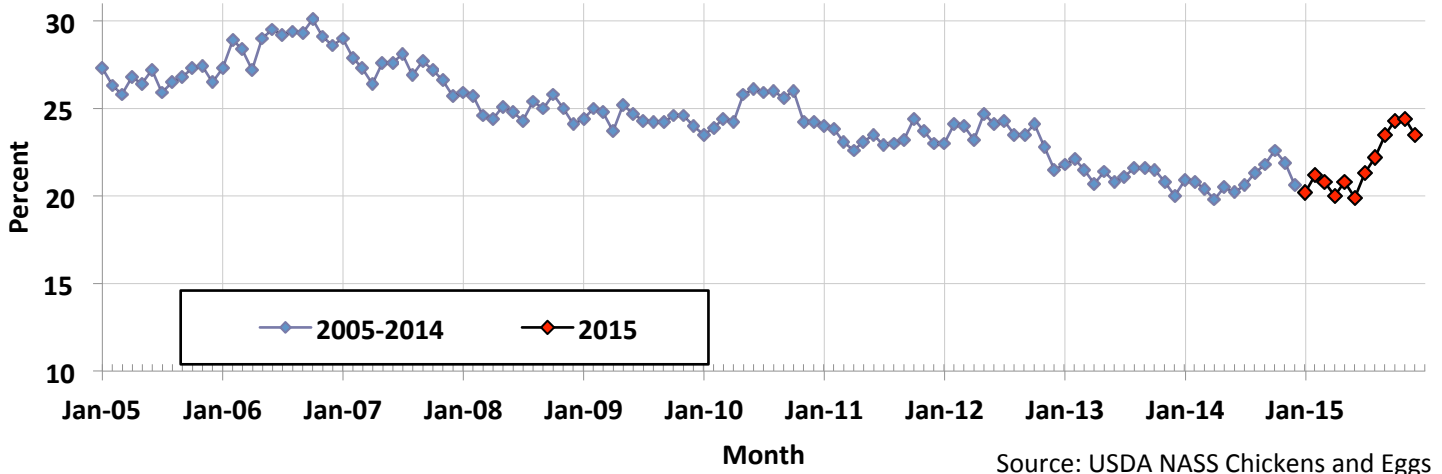
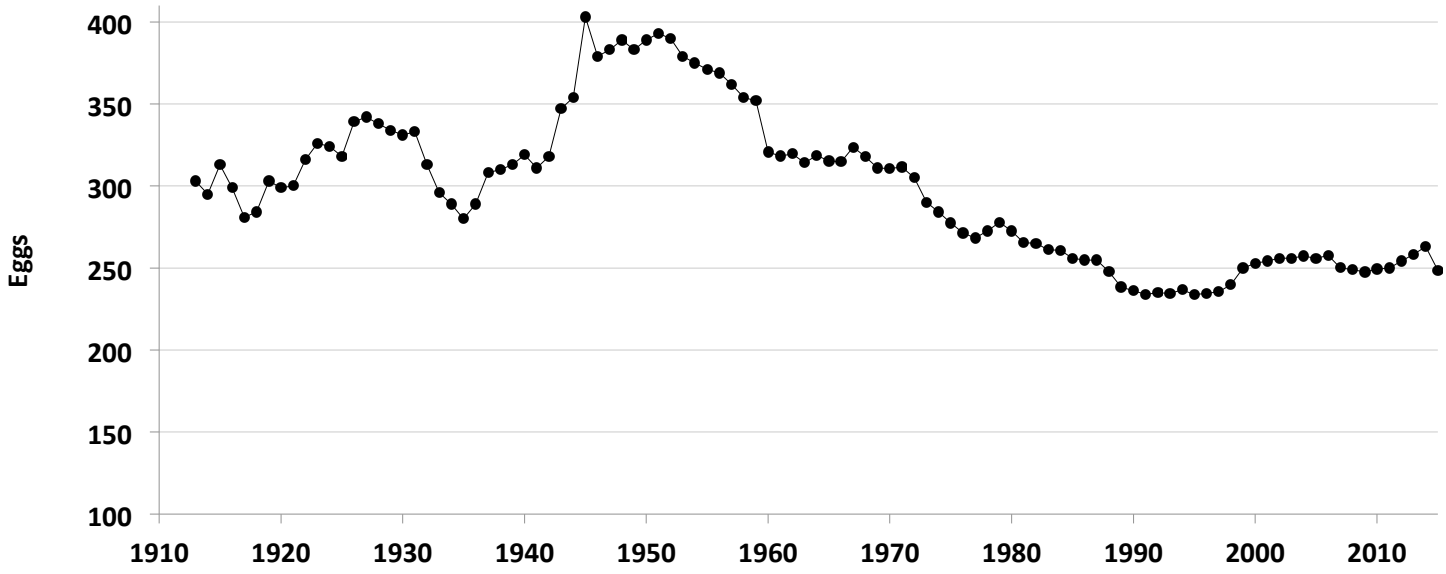


Figure 15: U.S. Per Capita Egg Consumption by Year (1913-2015)



SUMMARY TO DATE

Table 23

		2014	2015	% Change
HATCH of EGG-TYPE STRAIGHT RUN (THOUSANDS) (U.S.) (Total)	Jan to Dec	518,346	563,161	8.6
TABLE-EGG LAYERS (MILLIONS) (U.S.) (Avg.)	Jan to Dec	305.0	286.4	-6.1
TABLE EGGS (MILLIONS/MONTH) (U.S.) (Avg.)	Jan to Dec	7,265	6,784	-6.6
RATE OF LAY (%) (Avg.)	Jan to Dec	78.3	77.9	-0.4
U.S. TABLE EGG AVG. CASES/WEEK (THOUSANDS)	Jan to Dec	1,672	1,561	-6.6
AVG MONTHLY CASES OF EGGS BROKEN (MILLION) (U.S.)	Jan to Dec	6.284	5.848	-6.9
		2013	2014	Difference
PERCENT OF U.S. FLOCK IN or POST MOLT (Avg.)	Jan to Jan 2016	20.2	23.7	3.5
AVERAGE PULLETS ADDED/MONTH (MILLIONS) (U.S.)	Jan to Apr 2016	18.5	21.6	3.1

Note: U.S. cost of production and egg prices are published in another Egg Industry Center report. Contact Maro Ibarburu at maro@iastate.edu to be placed on the mailing list to receive monthly copies of these reports.

Webpages of some of the sources of information,

Access these sites by clicking on the blue addresses below:

- University of California Poultry Page <http://animalscience.ucdavis.edu/avian/>
- USDA NASS Chickens and Eggs <http://usda.mannlib.cornell.edu/MannUsda/viewDocumentInfo.do?documentID=1028>
- USDA NASS Poultry Slaughter <http://usda.mannlib.cornell.edu/MannUsda/viewDocumentInfo.do?documentID=1131>
- USDA NASS Egg Products <http://usda.mannlib.cornell.edu/MannUsda/viewDocumentInfo.do?documentID=1057>
- USDA ERS Livestock and Meat Trade Data. <http://www.ers.usda.gov/data/MeatTrade/BroilerTurkeyMonthly.htm>
- USDA FAS <http://www.fas.usda.gov/gats/ExpressQuery1.aspx>
- USDA NASS Cold Storage <http://usda.mannlib.cornell.edu/MannUsda/viewDocumentInfo.do?documentID=1034>
- USDA AMS Poultry Market News and Analysis <http://marketnews.usda.gov/portal/py>

Maro Ibarburu, EIC Business Analyst
 Iowa State University, Ames, IA
 Phone (515) 294-8132
 E-mail: maro@iastate.edu

