

# U.S. Flock Trends and Projections

November 4, 2016



*Compiled by*  
**Maro Ibarburu**

*Sponsored in part by:*



American Egg Board

*The Egg Industry Center Market Reports & Industry Analysis are compiled in the memory of their creator, Don D. Bell, Poultry Extension Specialist Emeritus - UC Davis.*

## U.S. EGG INDUSTRY STATISTICAL REPORT SUMMARY

\* The September hatch (straight-run chicks) was 10.2% lower than in 2015. This projects forward to a 18.7 million pullet placement for February of 2017 which is 2.9 million smaller than February of 2016 placement (21.5).

\* Current (September average, 2016) U.S. table egg layer number (303.4 million) is 8.8 percent larger than last year's number at this time (278.9 million), and up 2.4 million compared to last month (300.9 million).

\* In September, Iowa led the nation with 51.9 million laying hens compared to 30.7 million in Ohio, 27.6 million in Indiana, and 24.5 million in Pennsylvania. California (with 11.2 million layers) lost it's 5th position to Texas with 16.2 million layers.

\* The September U.S. rate of lay was estimated to be 79.2% which is 1.9% higher than September 2015 level. The total number of table eggs produced in September 2016 was 11.5% higher than the September 2015 production.

\* The September 2016 number of eggs exported was 27% higher than last year (September 2015) and 31% higher than last month (August 2016). The September exports represented 3.8% of the number of eggs produced.

\* Shell eggs broken for products in September 2016 totaled 6.544 million cases, 17.2% more than in September 2015 (5.583 million cases).

### Monthly Highlights (Compared to September a year ago) (% change) - U.S.

	2014	2015	% Change
Hatch - Egg-Type Straight Run (thousands) (U.S.)	49,391	44,343	-10.2
Table Egg Layers (millions) (U.S.)	278.9	303.4	8.8
Rate of lay (percent)	77.3	79.2	1.9
Molting (October 1, 2016) (percent in + out of a molt)	23.9	18.9	-20.9

### Year-end layers (millions) - U.S.

Year	2006	2007	2008	2009	2010	2011	2012	2013	2014	2015	2016
Million	290.6	284.7	285.6	285.2	286.8	290.1	298.6	308.2	311.3	291.1	*

\* please see pages 14-16

### Special note about table-egg definition

It was brought to our attention that some readers understand that the table-egg layers are the layers dedicated to the shell egg industry only.

The table-egg layers are the ones that produce eggs for both shell eggs and egg products market (all eggs for human consumption).

The total layers include table-egg layers but also include breeding stock for both the table-egg industry and for the broiler industry.

The same distinction is made between table-eggs and total eggs.



**TABLE OF CONTENTS**

<b>Table Name</b>	<b>Table #</b>	<b>Page</b>	<b>Sheet or Section</b>
Egg Type: U.S. Eggs In Incubators and Straight Run Hatch	1	3	U.S. Volume
Average U.S. Layers and Table Egg Layers	2	3	U.S. Volume
U.S. All Eggs, Table Eggs and Rate of Lay	3	4	U.S. Volume
Shell Eggs Broken Under Federal Inspection	4	5	U.S. Volume
Per Capita Egg Consumption by Quarter	5	5	U.S. Volume
Induced Molt Percent - U.S. Totals (1st of Month)	6	6	U.S. Volume
Slaughter of Light Fowl	7	6	U.S. Volume
Export of Table Eggs In the Shell In 2016	8	7	Trade
Export of Egg Products In 2016	9	7	Trade
Total Eggs Exported - 2016	10	7	Trade
All Eggs Produced, Including Hatching Eggs, by Region - 2016	11	9	Regional
All Layers by Region, Including Breeders - 2016	12	10	Regional
Table Egg Layers In Flocks 30,000 and Above by Region - 2016	13	10	Regional
Total Molt by Region (Simple Average of Reporting States, %) - 2016	14	10	Regional
Table Egg Layers In Flocks 30,000 and Above In Leading States (Average) - 2016	15	11	Regional
Projected U.S. Egg-Type Hatchery Supply Flock - 2016	16	12	Projections
U.S. Pullets to be Housed Based Upon Hatch 5 Month Ago	17	12	Projections
Projected U.S. Table Egg Flock Less Than 72 Weeks of Age	18	13	Projections
First of the Month Projection Estimates of U.S. Table Egg Layers (millions)	19	14	Projections
Projected vs. Actual First of the Month (U.S. Flock Size) - 2016	20	14	Projections
2016 Bird Flow by Month	21	15	Projected Flock
2016 United States Flock Size Projections	22	16	Previous Projections
Summary to Date	23	19	Final

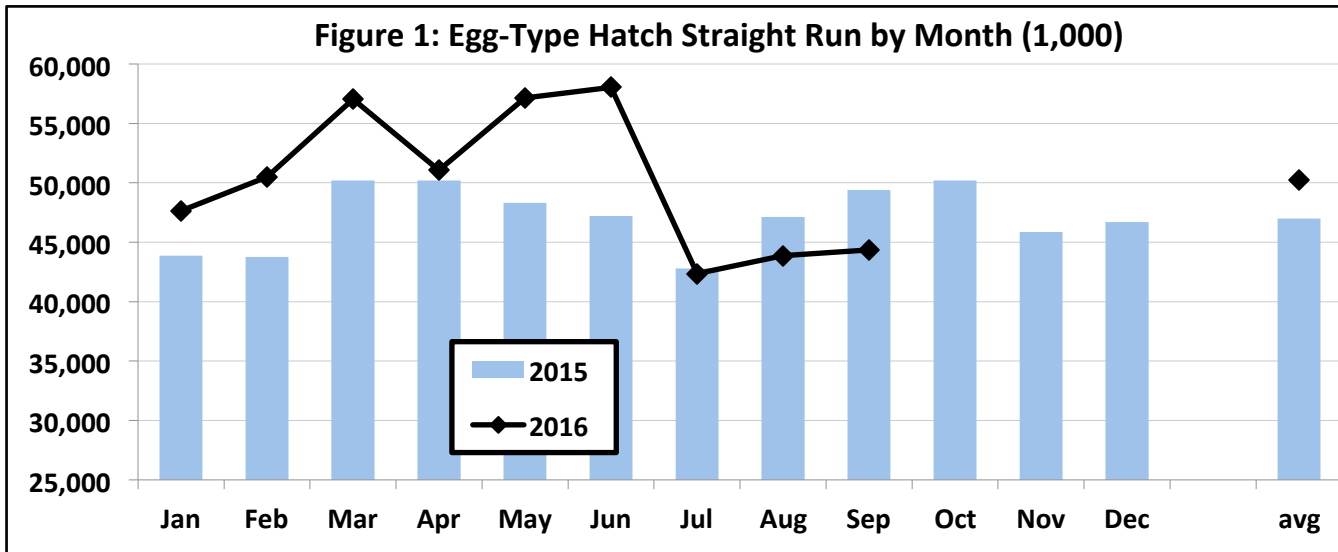
<b>Figure Name</b>	<b>Figure #</b>	<b>Page</b>	<b>Sheet or Section</b>
Egg-Type Hatch Straight Run by Month (1,000)	1	3	U.S. Volume
Table Egg Layers by Month (Millions)	2	4	U.S. Volume
Rate of Lay (Percent)	3	4	U.S. Volume
Shell Eggs Broken for Further Processing by Month (Million cases)	4	5	U.S. Volume
Shell Eggs Broken by Month (Percent of Total Table Eggs)	5	5	U.S. Volume
Monthly Percent Molted	6	6	U.S. Volume
Slaughter of Light Fowl by Month (Millions)	7	6	U.S. Volume
U.S. Egg Exports by Month - 2014 and 2015	8	8	Trade
U.S. Exported Eggs by Month - 2014 and 2015	9	8	Trade
Leading States' Table Egg Layers In Flocks of 30,000 and Above (1988-2015)	10	11	Regional
Percent of U.S. Flock More Than 72 Weeks of Age by Month	11	13	Projections
U.S. Monthly Table-Egg Layers (2006-2016)	12	17	Trends
U.S. Table Eggs per Hen per Day by Month (2006-2016)	13	17	Trends
Monthly Percent of U.S. Flock Molted (2006-2016)	14	17	Trends
U.S. Per Capita Egg Consumption by Year (1913-2016)	15	18	Trends



**EGG TYPE: EGGS IN INCUBATORS (on the 1st of the month) and STRAIGHT RUN HATCH (U.S.)** **TABLE 1**

EGG-TYPE Eggs in Incubators (thousands)				EGG-TYPE Straight Run Hatch (thousands)			
month	2015	2016	Change (%)	month	2015	2016	Change %
Jan	42,237	47,981	13.6	Jan	43,868	47,645	8.6
Feb	40,709	47,942	17.8	Feb	43,774	50,481	15.3
Mar	45,902	50,402	9.8	Mar	50,187	57,037	13.6
Apr	49,341	50,861	3.1	Apr	50,193	51,052	1.7
May	48,583	53,478	10.1	May	48,315	57,155	18.3
Jun	47,971	54,579	13.8	Jun	47,212	58,040	22.9
Jul	43,647	44,940	3.0	Jul	42,790	42,349	-1.0
Aug	44,480	38,355	-13.8	Aug	47,131	43,870	-6.9
Sep	46,521	43,558	-6.4	Sep	49,391	44,343	-10.2
Oct	49,648	40,676	-18.1	Oct	50,194		
Nov	47,072			Nov	45,848		
Dec	48,194			Dec	46,695		
<b>10 Month Avg.</b>	45,904	47,277	3.0	<b>9 Month Avg.</b>	46,985	50,219	6.9
<b>10 Month Total</b>	459,039	472,772		<b>9 Month Total</b>	422,861	451,972	
<b>12 Month Total</b>	554,305			<b>12 Month Total</b>	565,598		

Source: USDA NASS Chickens and Eggs

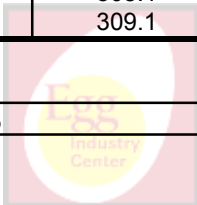


**AVERAGE U.S. LAYERS AND TABLE EGG LAYERS 2014/2015 (MILLIONS)** **TABLE 2**

month	All Layers			Table Egg Layers			
	2015	2016	Change (%)	2014	2015	2016	Change (%)
Jan	366.7	351.3	-4.2	307.2	309.5	293.1	-5.3
Feb	365.4	357.1	-2.3	306.7	308.1	298.6	-3.1
Mar	366.0	361.2	-1.3	307.7	308.1	302.5	-1.8
Apr	362.0	361.1	-0.2	308.3	303.6	302.4	-0.4
May	345.3	360.6	4.4	307.6	286.8	301.9	5.3
Jun	332.6	359.3	8.0	307.0	274.2	301.0	9.8
Jul	333.3	357.6	7.3	308.2	275.1	299.7	8.9
Aug	334.5	358.5	7.2	309.6	276.6	300.9	8.8
Sep	336.6	360.5	7.1	310.4	278.9	303.4	8.8
Oct	339.4			310.7	281.7		
Nov	343.5			312.7	285.5		
Dec	347.8			313.0	289.7		
<b>9 Month Avg.</b>	349.2	358.6	2.7	308.1	291.2	300.4	3.2
<b>Annual Avg.</b>	347.8			309.1	289.8		

Source: USDA NASS Chickens and Eggs

**Table egg layers as a % of all layers to date (2015): 83.8%**

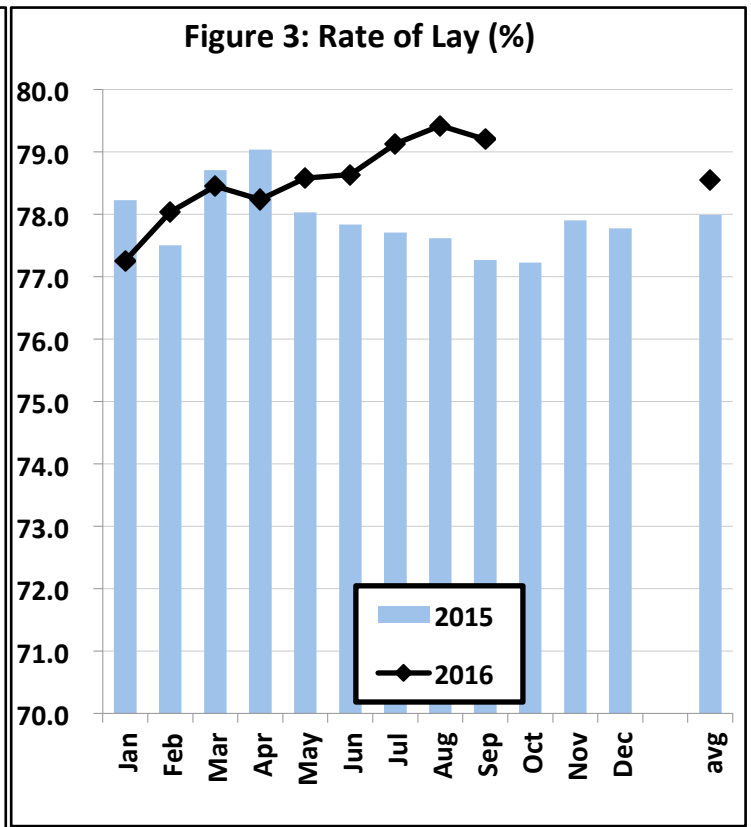
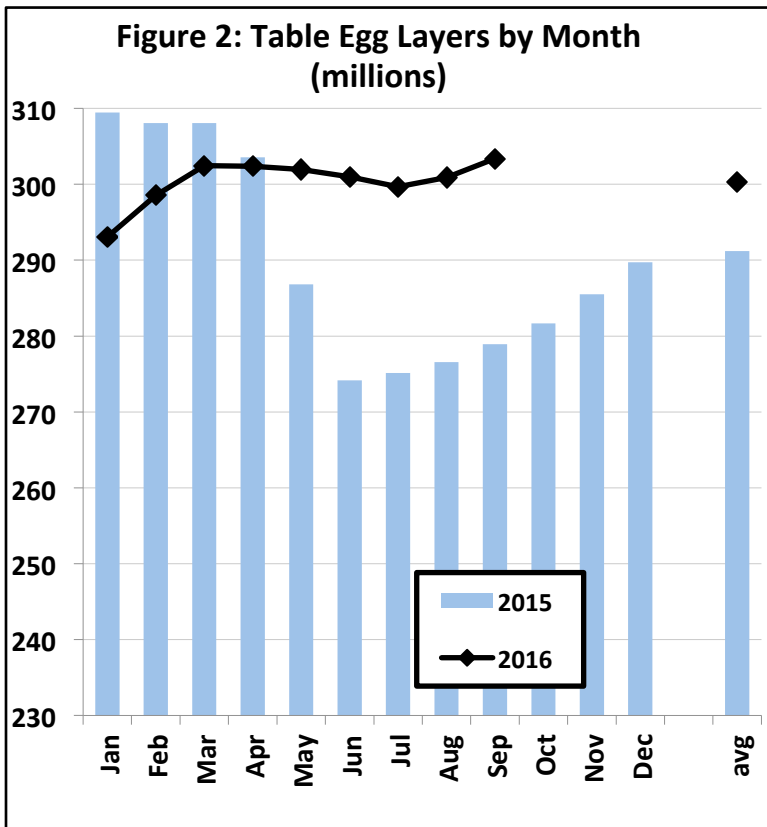


U.S. ALL EGGS, TABLE EGGS AND RATE OF LAY (ALL STATES)

TABLE 3

month	All Eggs (millions)			Table Eggs - human consumption (millions)			Rate of Lay (Table)	
	2015	2016	Change (%)	2015	2016	Change (%)	2015	2016
Jan	8,612	8,152	-5.3	7,503	7,019	-6.5	78.2	77.3
Feb	7,686	7,818	1.7	6,685	6,756	1.1	77.5	78.0
Mar	8,634	8,496	-1.6	7,515	7,357	-2.1	78.7	78.5
Apr	8,294	8,207	-1.1	7,199	7,096	-1.4	79.0	78.2
May	8,076	8,509	5.4	6,936	7,355	6.0	78.0	78.6
Jun	7,509	8,208	9.3	6,401	7,099	10.9	77.8	78.6
Jul	7,775	8,498	9.3	6,629	7,351	10.9	77.7	79.1
Aug	7,798	8,552	9.7	6,655	7,409	11.3	77.6	79.4
Sep	7,562	8,300	9.8	6,465	7,207	11.5	77.3	79.2
Oct	7,872			6,743			77.2	
Nov	7,763			6,671			77.9	
Dec	8,117			6,985			77.8	
<b>9 Month Avg.</b>	7,994	8,304	3.9	6,888	7,183	4.3	78.0	78.5
<b>Annual Avg.</b>	7,975			6,866			77.9	
<b>Total</b>	95,696	74,740		82,387	64,647			

Source: USDA NASS Chickens and Eggs



SHELL EGGS BROKEN UNDER FEDERAL INSPECTION (MILLION CASES)

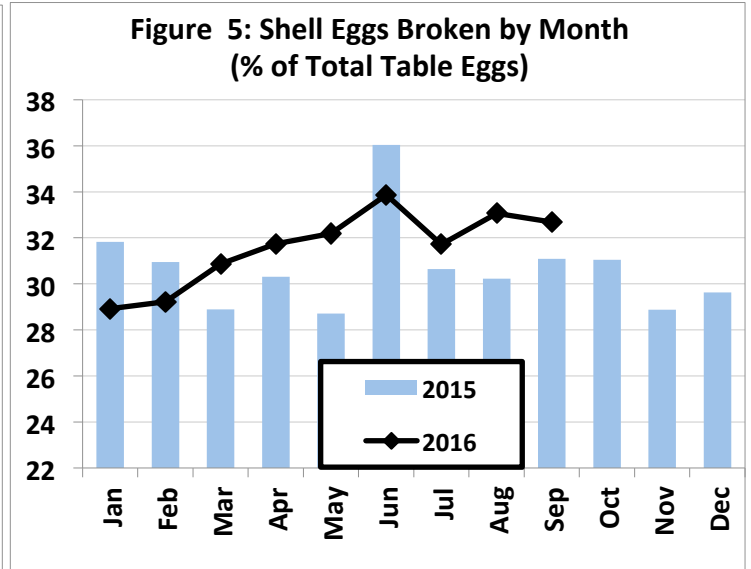
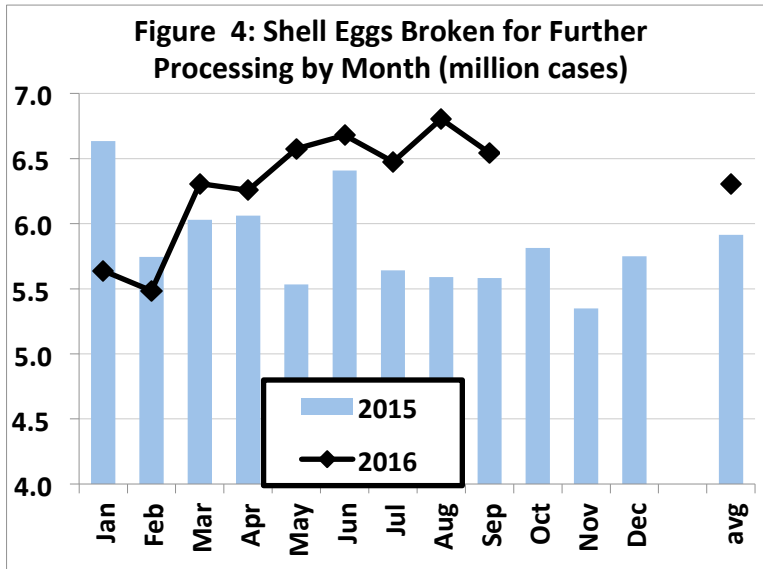
TABLE 4

month	2010	2011	2012	2013	2014	2015	2016	16/15 (%) Change
Jan	5.268	5.668	5.666	5.765	5.865	6.634	5.639	-15.0
Feb	5.013	5.163	5.524	5.374	5.325	5.746	5.484	-4.5
Mar	5.504	6.008	5.715	5.831	6.086	6.030	6.308	4.6
Apr	5.714	5.464	5.634	5.950	6.205	6.061	6.255	3.2
May	5.727	5.838	6.057	5.820	6.514	5.533	6.576	18.9
Jun	6.206	6.167	5.955	6.118	6.532	6.408	6.679	4.2
Jul	5.977	5.988	5.748	6.266	6.618	5.641	6.474	14.8
Aug	5.884	6.061	6.523	6.200	6.596	5.589	6.804	21.7
Sep	6.582	5.869	6.005	6.040	6.566	5.583	6.544	17.2
Oct	5.842	5.805	6.109	6.289	6.731	5.814		
Nov	5.445	5.786	5.577	5.738	6.086	5.350		
Dec	5.891	5.615	5.964	5.745	6.281	5.749		
<b>9 Month Avg.</b>	5.764	5.803	5.870	5.929	6.256	5.914	6.307	6.6
<b>9 Month Total</b>	51.875	52.225	52.827	53.364	56.307	53.225	56.764	
<b>12 Month Total</b>	69.054	69.431	70.477	71.136	75.405	70.138		

Source: USDA NASS Egg products - monthly

Million Cases Produced  
% BROKEN

221.728	228.286	236.092	245.460	228.854	179.575
31.3	30.9	30.1	30.7	30.6	31.6



PER CAPITA EGG CONSUMPTION BY QUARTER

TABLE 5

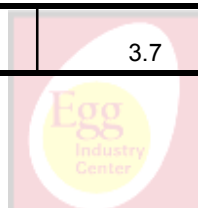
QUARTER	2010	2011	2012	2013	2014	2015	2016*	2017*
1	61.8	61.3	63.2	64.2	65.5	65.2	66.1	66.6
2	61.9	61.5	62.2	63.3	66.1	62.3	66.0	66.4
3	62.5	62.8	63.3	64.5	67.1	61.1	67.2	
4	63.1	64.3	65.6	66.0	68.4	64.5	67.5	
<b>Total</b>	249.3	249.9	254.3	258.0	267.1	253.0	266.9	266.2

Change from previous year (eggs)

0.6	4.4	3.7	9.1	-14.1	13.9	-0.7
-----	-----	-----	-----	-------	------	------

Source: USDA ERS Livestock and Meat Trade Data.

\* Estimates for 2016 and 2017 (10/2016)

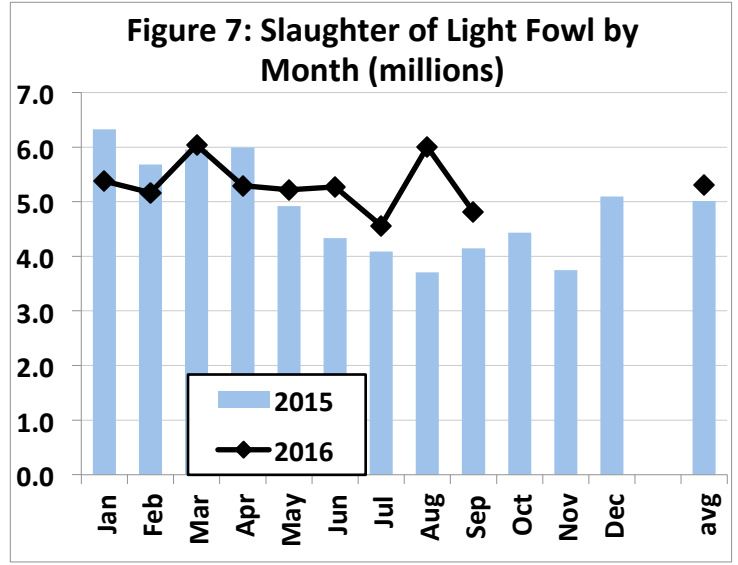
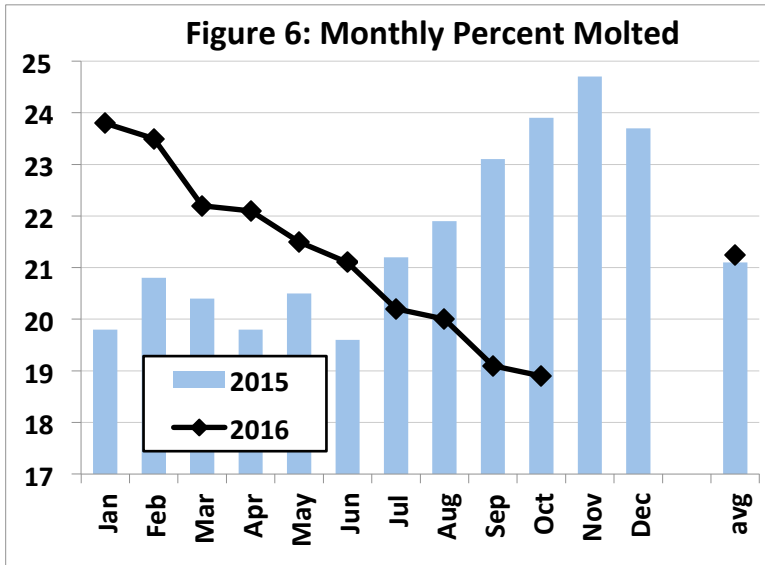


INDUCED MOLT PERCENT - U.S. TOTALS (1ST OF MONTH)

TABLE 6

month	In a Molt			Completed a Molt		Total		
	2015	2016	Change	2015	2016	2015	2016	Change
Jan	2.1	2.5	0.4	17.7	21.3	19.8	23.8	4.0
Feb	3.3	2.9	-0.4	17.5	20.6	20.8	23.5	2.7
Mar	1.9	1.5	-0.4	18.5	20.7	20.4	22.2	1.8
Apr	2.1	2.9	0.8	17.7	19.2	19.8	22.1	2.3
May	3.1	2.8	-0.3	17.4	18.7	20.5	21.5	1.0
Jun	2.4	2.9	0.5	17.2	18.2	19.6	21.1	1.5
Jul	3.0	2.5	-0.5	18.2	17.7	21.2	20.2	-1.0
Aug	2.7	2.6	-0.1	19.2	17.4	21.9	20.0	-1.9
Sep	3.4	2.6	-0.8	19.7	16.5	23.1	19.1	-4.0
Oct	3.4	2.1	-1.3	20.5	16.8	23.9	18.9	-5.0
Nov	3.4			21.3		24.7		
Dec	1.8			21.9		23.7		
<b>10 Month Avg.</b>	2.7	2.5	-0.2	18.4	18.7	21.1	21.2	0.1
<b>12 Month Avg.</b>	2.7			18.9		21.6		

Source: USDA NASS Chickens and Eggs

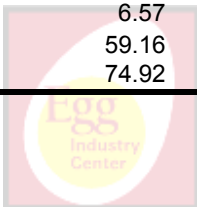


SLAUGHTER OF LIGHT FOWL (MILLIONS)

TABLE 7

month	2010	2011	2012	2013	2014	2015	2016	6 YR (09-14) Month Avg.
Jan	5.80	5.90	6.98	7.63	7.01	6.33	5.38	6.61
Feb	5.22	5.59	5.57	6.20	5.86	5.68	5.17	5.68
Mar	6.50	6.56	7.15	6.49	6.15	5.96	6.04	6.47
Apr	6.59	5.99	7.95	8.31	6.63	5.99	5.30	6.91
May	5.78	6.42	7.91	7.21	7.06	4.92	5.22	6.55
Jun	5.88	5.30	6.25	5.40	6.07	4.33	5.27	5.54
Jul	5.42	5.00	4.45	5.60	5.32	4.09	4.56	4.98
Aug	5.64	5.85	6.00	6.81	6.13	3.71	6.01	5.69
Sep	6.12	5.68	5.39	5.50	5.80	4.14	4.81	5.44
Oct	5.01	5.56	5.60	5.73	5.57	4.44		5.32
Nov	4.07	4.92	5.12	3.59	3.75	3.75		4.20
Dec	5.63	5.60	6.89	6.45	6.47	5.10		6.02
<b>9 Month Avg.</b>	5.88	5.81	6.41	6.57	6.22	5.02	5.31	5.99
<b>9 Month Total</b>	52.95	52.29	57.65	59.16	56.02	45.14	47.75	53.87
<b>12 Month Total</b>	67.66	68.37	75.25	74.92	71.80	58.42		69.40

Source: USDA NASS Poultry Slaughter



EXPORT OF TABLE EGGS IN THE SHELL IN 2016 (Thousand cases- 30 doz)

TABLE 8

Month \ To	North America	Central America	Caribbean	European Union-28	East Asia	Southeast Asia	Middle East	Total 2016	Total 2015	% of U.S. Production
Jan	97.2	0.9	64.7	0.0	90.3	0.0	7.1	272.3	468.2	1.40
Feb	131.6	4.8	79.1	0.2	68.2	0.2	1.8	298.0	491.3	1.59
Mar	185.6	1.9	89.1	0.1	116.8	0.0	2.4	409.7	525.8	2.00
Apr	130.3	4.6	96.5	0.2	89.5	0.0	1.8	335.2	540.0	1.70
May	99.4	0.1	67.5	0.6	83.8	0.0	4.7	267.3	352.5	1.31
Jun	65.4	1.4	70.0	3.5	86.8	0.0	9.5	243.6	322.4	1.24
Jul	94.3	4.6	67.9	0.8	85.9	0.0	18.1	283.1	321.8	1.39
Aug	107.0	1.7	69.4	0.0	84.1	0.0	24.4	296.0	421.7	1.44
Sep	159.9	1.6	119.2	0.1	81.2	0.0	34.2	411.0	305.7	2.05
Oct									328.1	
Nov									279.3	
Dec									262.2	
<b>9 Mo. Total</b>	<b>1,070.6</b>	<b>21.7</b>	<b>723.3</b>	<b>5.5</b>	<b>786.7</b>	<b>0.2</b>	<b>103.9</b>	<b>2,816.2</b>	<b>3,749.3</b>	<b>1.57</b>
<b>%</b>	<b>38.0</b>	<b>0.8</b>	<b>25.7</b>	<b>0.2</b>	<b>27.9</b>	<b>0.0</b>	<b>3.7</b>			

Source: USDA Foreign Agric. Service from U.S. Dept. of Commerce, U.S. Census Bureau, Foreign Trade Stats

EXPORT OF EGG PRODUCTS IN 2016 (EQUIVALENT: thousand cases- 30 doz)

TABLE 9

Month \ To	North America	Central America	Caribbean	European Union-28	East Asia	Southeast Asia	Middle East	Total 2016	Total 2015	% of U.S. Production
Jan	77.1	7.6	4.8	21.3	43.0	13.3	2.4	169.9	517.3	0.87
Feb	60.6	9.7	5.8	16.4	64.1	4.1	1.1	162.8	436.1	0.87
Mar	104.2	16.9	12.0	6.0	133.0	10.5	4.2	291.3	463.9	1.43
Apr	104.7	5.0	8.7	16.8	77.5	10.5	5.6	233.8	402.1	1.19
May	70.7	5.1	6.0	40.9	92.4	0.8	2.2	221.8	385.0	1.09
Jun	101.2	7.2	3.0	15.4	72.3	13.8	30.4	244.5	194.7	1.24
Jul	79.3	23.4	3.7	42.2	75.6	3.1	3.9	236.7	194.3	1.16
Aug	98.4	7.8	12.8	47.0	95.6	17.7	3.0	286.9	254.1	1.39
Sep	107.6	18.4	4.0	95.6	110.4	11.7	2.3	355.1	297.5	1.77
Oct									211.7	
Nov									157.0	
Dec									324.1	
<b>9 Mo. Total</b>	<b>803.7</b>	<b>101.2</b>	<b>60.7</b>	<b>301.5</b>	<b>764.0</b>	<b>85.5</b>	<b>55.1</b>	<b>2,202.7</b>	<b>3,145.0</b>	<b>1.22</b>
<b>%</b>	<b>36.5</b>	<b>4.6</b>	<b>2.8</b>	<b>13.7</b>	<b>34.7</b>	<b>3.9</b>	<b>2.5</b>			

Converted from metric tonnes at a rate of one metric tonne equals approximately 52.4 thirty dozen cases.

Source: USDA Economic Research Service from U.S. Dept. of Commerce, U.S. Census Bureau, Foreign Trade Stats.

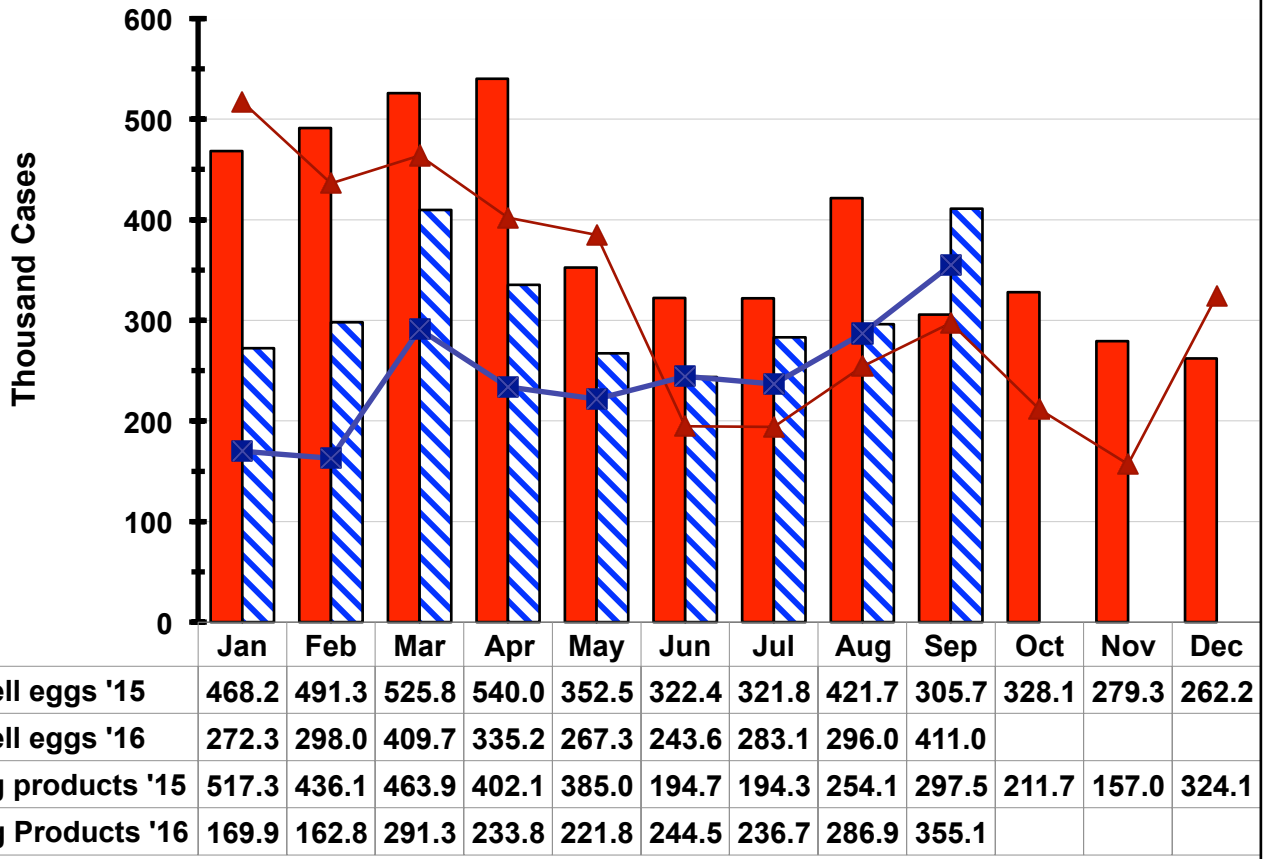
TOTAL EGGS EXPORTED - 2016

TABLE 10

	Table Eggs Produced		Table Eggs Exported		Egg Products Exported		Total Exported	
	(000) Cases		Cases	% of U.S.	Cases	% of U.S.	Cases	% of U.S.
Jan		19,497	272.3	1.40	169.9	0.87	442.1	2.27
Feb		18,766	298.0	1.59	162.8	0.87	460.8	2.46
Mar		20,436	409.7	2.00	291.3	1.43	700.9	3.43
Apr		19,710	335.2	1.70	233.8	1.19	569.0	2.89
May		20,432	267.3	1.31	221.8	1.09	489.1	2.39
Jun		19,719	243.6	1.24	244.5	1.24	488.0	2.48
Jul		20,418	283.1	1.39	236.7	1.16	519.8	2.55
Aug		20,581	296.0	1.44	286.9	1.39	582.9	2.83
Sep		20,018	411.0	2.05	355.1	1.77	766.1	3.83
Oct								
Nov								
Dec								
<b>Total/Av</b>		<b>179,575</b>	<b>2,816.2</b>	<b>1.57</b>	<b>2,202.7</b>	<b>1.23</b>	<b>5,018.9</b>	<b>2.79</b>

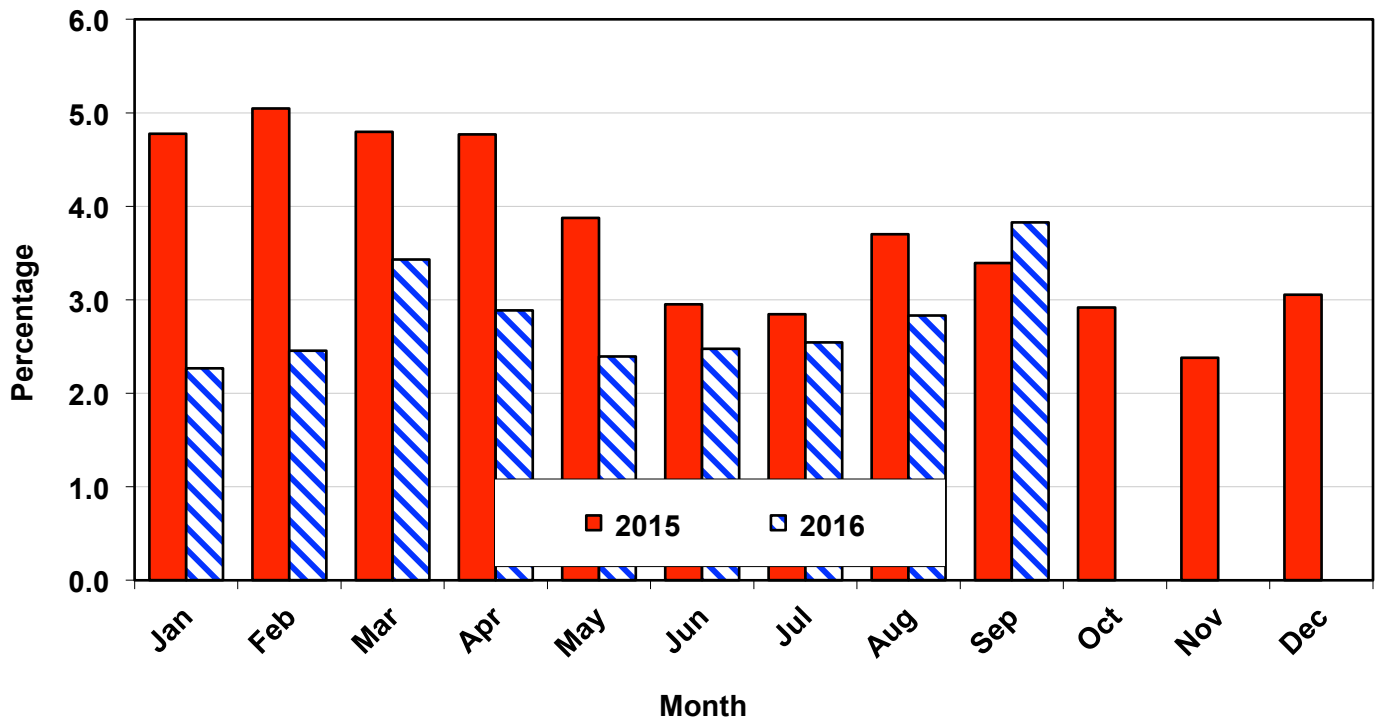


**Figure 8: U.S. Egg Exports by Month - 2015 and 2016**



Note: Information has been converted from metric tonnes at a rate of 42 lbs. per case of liquid egg (edible + inedibles).

**Figure 9: Exported Eggs by Month - 2015 and 2016  
(percentage of eggs produced)**



ALL EGGS PRODUCED, INCLUDING HATCHING EGGS, BY REGION (Million) - 2016

TABLE 11

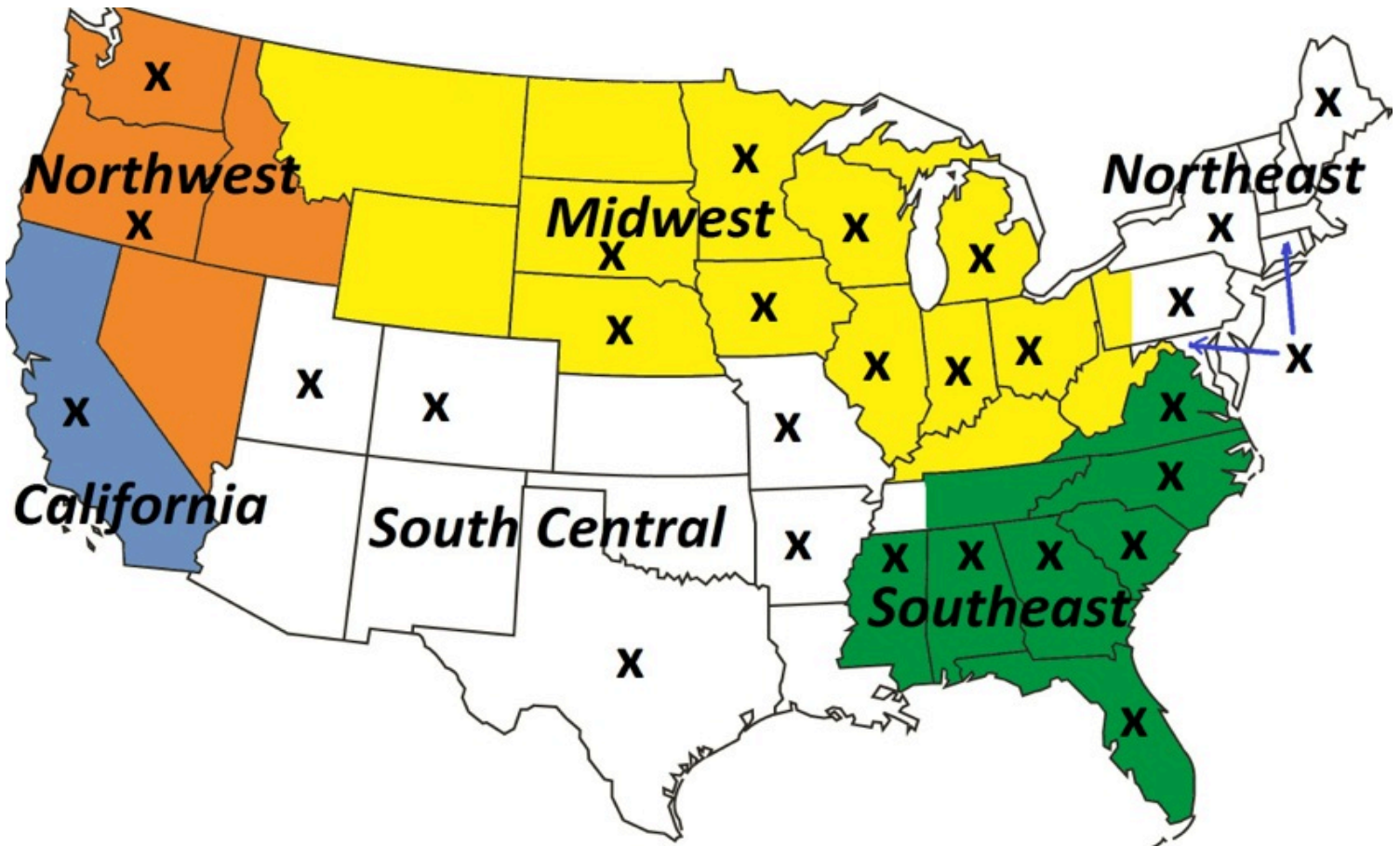
month	Northeast	Southeast	South Central	Midwest	Northwest	California	U.S. Total
	864	1,506	1,311	3,584	227	297	8,152
Feb	841	1,408	1,228	3,457	224	276	7,818
Mar	934	1,486	1,299	3,736	247	297	8,496
Apr	903	1,406	1,256	3,704	226	291	8,207
May	911	1,441	1,304	3,825	226	300	8,509
Jun	883	1,390	1,242	3,705	220	288	8,208
Jul	919	1,448	1,282	3,828	228	292	8,498
Aug	909	1,446	1,291	3,885	231	291	8,552
Sep	876	1,386	1,254	3,804	219	283	8,300
Oct							
Nov							
Dec							
<b>9 Month Avg.</b>	893	1,435	1,274	3,725	227	291	8,304
<b>% of total</b>	10.8	17.3	15.3	44.9	2.7	3.5	

Source: USDA NASS Chickens and Eggs

Note: All States are not represented (see map below)

Note: Year 2015 average for the following States were added: KY, LA, MA, MT, OK, TN, VT and WV

Map of U.S. Regions, as defined by Urner Barry, and the location of information used in this report



Notes

The x's mark the States where there is USDA data available on number of layers, egg production and percent molt.

Northwest is the sum of OR and WA

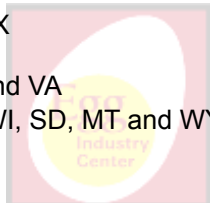
South Central is the sum of AR, UT, CO, MO and TX

Northeast is the sum of CT, MD, ME, NY and PA

Southeast is the sum of AL, FL, GA, MS, NC, SC and VA

Midwest is the sum of IA, IL, IN, MI, MN, NE, OH, WI, SD, MT and WY

California is the state of California only



**ALL LAYERS BY REGION, INCLUDING BREEDERS (Million) - 2016**

**TABLE 12**

month	Northeast	Southeast	South Central	Midwest	Northwest	California	U.S. Total
Jan	34.8	68.7	57.5	153.7	9.3	12.4	351.3
Feb	35.5	69.0	57.7	158.1	9.7	12.3	357.1
Mar	36.5	69.0	57.3	161.6	9.8	12.3	361.2
Apr	36.4	68.0	56.8	163.4	9.6	12.4	361.1
May	35.7	67.4	56.9	164.3	9.3	12.5	360.6
Jun	35.7	66.8	56.5	164.4	9.1	12.4	359.3
Jul	35.6	66.5	56.0	164.0	9.2	12.0	357.6
Aug	35.3	66.5	56.7	164.6	9.1	11.9	358.5
Sep	35.2	66.1	57.1	166.6	9.2	11.8	360.5
Oct							
Nov							
Dec							
<b>9 Month Avg.</b>	35.7	67.5	57.0	162.3	9.3	12.2	358.6
<b>% of total</b>	9.9	18.8	15.9	45.3	2.6	3.4	

Source: USDA NASS Chickens and Eggs

Note: Year 2015 average for the following States were added: KY, LA, MA, MT, OK, TN, VT and WV

**TABLE EGG LAYERS IN FLOCKS OF 30,000 AND ABOVE BY REGION (Million) - 2016**

**TABLE 13**

month	Northeast	Southeast	South Central	Midwest	Northwest	California	U.S. Total
Jan	31.9	32.9	36.6	142.0	9.0	11.9	283.6
Feb	32.6	33.0	36.5	146.4	9.4	11.8	289.0
Mar	33.5	32.9	36.2	149.8	9.5	11.8	293.0
Apr	33.4	31.9	35.9	151.5	9.2	11.8	292.9
May	32.7	31.5	36.0	152.3	9.0	12.0	292.4
Jun	32.7	31.0	35.7	152.5	8.8	11.8	291.4
Jul	32.6	31.1	35.2	152.1	8.8	11.5	290.2
Aug	32.3	31.3	36.0	152.6	8.8	11.4	291.4
Sep	32.3	31.1	36.6	154.7	8.9	11.2	293.9
Oct							
Nov							
Dec							
<b>9 Month Avg.</b>	32.7	31.9	36.1	150.4	9.0	11.7	290.9
<b>% of total</b>	11.2	11.0	12.4	51.7	3.1	4.0	

Source: USDA NASS Chickens and Eggs

\* The drop in the Northeast region number is mostly explained by not having a count for CT and ME for the period after March

**TOTAL MOLT (in-molt plus post-molt) BY REGION (Simple average of reporting States, %) - 2016**

**TABLE 14**

month	Northeast	Southeast	South Central	Midwest	Northwest	California	U.S. Avg
Jan	4.2	24.6	29.0	25.2	26.3	20.0	23.8
Feb	4.3	25.5	29.8	23.3	17.0	19.5	23.5
Mar	4.3	24.4	27.9	24.3	15.3	19.5	22.2
Apr	4.2	25.5	28.9	23.0	19.5	18.0	22.1
May	3.2	27.0	29.2	22.6	19.8	16.0	21.5
Jun	2.7	27.2	26.5	22.1	18.5	18.5	21.1
Jul	2.8	27.1	27.1	19.2	17.3	19.0	20.2
Aug	2.2	26.7	27.7	18.5	19.3	21.5	20.0
Sep	2.0	27.4	26.4	17.5	17.8	19.5	19.0
Oct	1.8	27.6	26.6	16.2	16.5	18.0	18.9
Nov							
Dec							
<b>9 Month Avg.</b>	3.2	26.3	27.9	21.2	18.7	19.0	21.2
<b>year 2015 avg.</b>	3.9	21.2	25.9	20.5	23.3	29.9	21.6

Source: USDA NASS Chickens and Eggs

Note: average molt is estimated as the simple average of the reported States

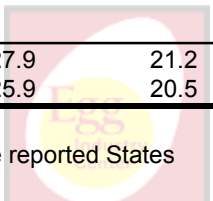


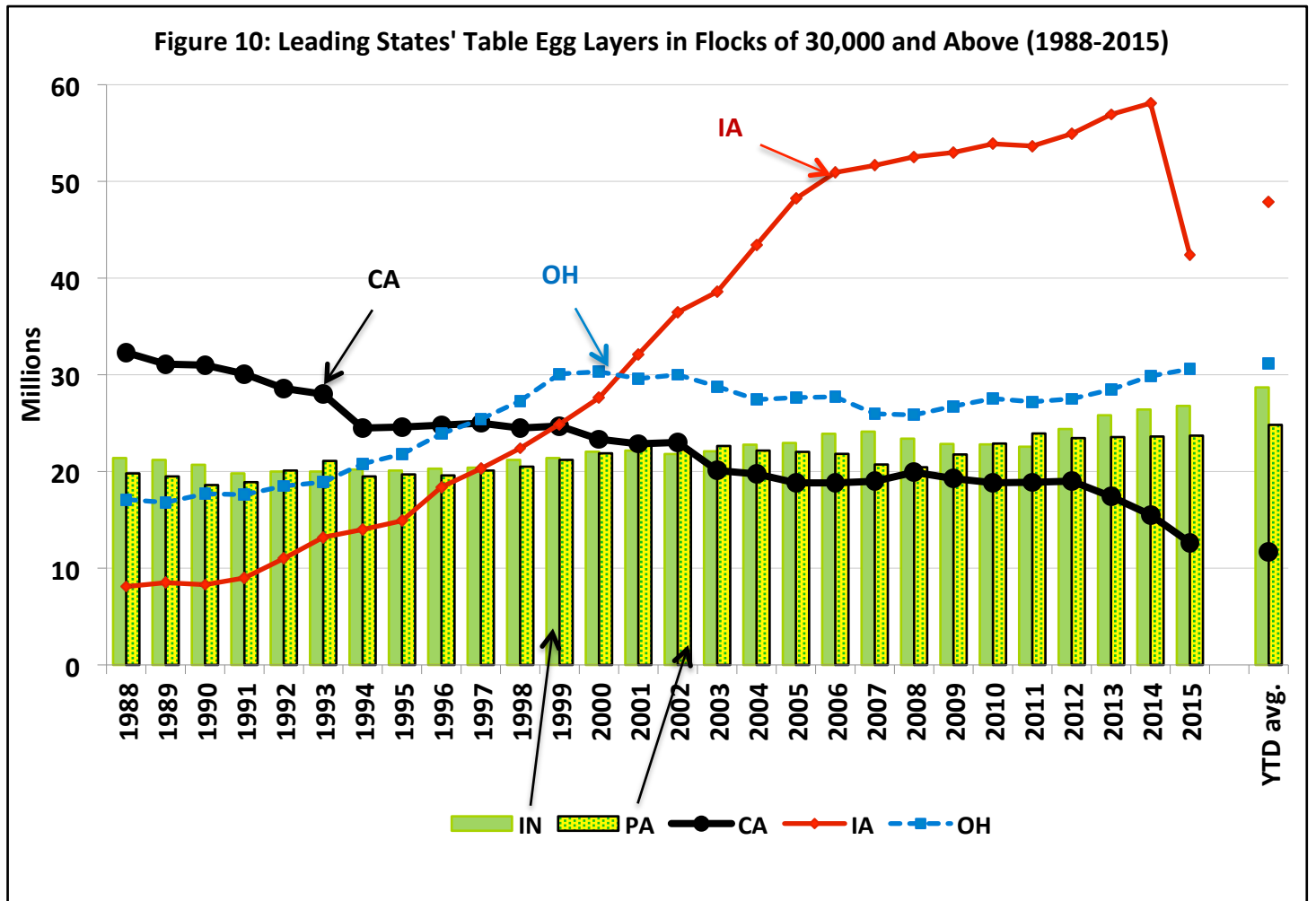
TABLE EGG LAYERS IN LEADING STATES - (LAYERS IN 30,000+ HEN FLOCKS) - 2016

TABLE 15

month	IA	OH	IN	PA	CA	TX	U.S.
Sep-2015	33.06	31.83	28.53	24.02	11.40	15.64	269.40
Jan-2016	40.08	32.01	29.07	23.89	11.87	16.55	283.56
Feb-2016	43.85	32.30	28.85	24.70	11.79	16.48	289.04
Mar-2016	46.48	32.02	29.23	25.64	11.81	16.45	292.95
Apr-2016	47.89	31.49	29.27	25.49	11.85	16.40	292.86
May-2016	48.72	31.16	29.28	25.01	12.00	16.33	292.42
Jun-2016	49.92	30.56	29.04	24.95	11.85	16.17	291.45
Jul-2016	50.78	30.00	28.34	24.76	11.46	16.17	290.16
Aug-2016	51.20	30.15	27.65	24.49	11.41	16.28	291.40
Sep-2016	51.91	30.74	27.61	24.51	11.24	16.18	293.85
Oct-2016							
Nov-2016							
Dec-2016							
<b>9 Month Avg.</b>	<b>47.87</b>	<b>31.16</b>	<b>28.70</b>	<b>24.83</b>	<b>11.70</b>	<b>16.33</b>	<b>290.85</b>

Source: USDA NASS Chickens and Eggs

% of all U.S. table egg layers in flocks with 30,000 or more hens = 96.8%



**PROJECTED U.S. EGG-TYPE HATCHERY SUPPLY FLOCK (Millions)**

**TABLE 16**

month	2011	2012	2013	2014	2015	2016	2017
Jan	3.087	2.706	2.791	2.436	2.608	2.797	2.836
Feb	3.123	2.659	2.830	2.515	2.535	2.797	2.725
Mar	3.108	2.653	2.786	2.503	2.553	2.857	2.615
Apr	3.039	2.703	2.786	2.468	2.610	2.958	
May	2.998	2.672	2.649	2.555	2.619	2.937	
Jun	2.996	2.657	2.745	2.476	2.664	2.947	
Jul	2.883	2.672	2.579	2.540	2.682	3.081	
Aug	2.848	2.731	2.613	2.536	2.689	3.074	
Sep	2.877	2.732	2.630	2.472	2.605	2.997	
Oct	2.779	2.819	2.588	2.530	2.718	2.840	
Nov	2.755	2.778	2.515	2.497	2.917	2.805	
Dec	2.713	2.791	2.537	2.439	2.892	2.866	
<b>3 month avg.</b>	3.106	2.673	2.802	2.485	2.565	2.817	2.725
<b>12 month avg.</b>	2.934	2.714	2.671	2.497	2.674	2.913	

Source: USDA NASS Chickens and Eggs

Note: The hatchery supply flock estimates are made by using 7 to 18 months prior hatch minus 9% mortality

**PULLETS TO BE HOUSED BASED UPON U.S. HATCH 5 MONTH AGO (Millions)**

**TABLE 17**

(47.5% of CHICKS PLACED multiplied by a 95% LIVABILITY FACTOR)

month	2012	2013	2014	2015	2016	2017	2012 to '16 month avg.
Jan	18.7	19.1	17.5	17.9	21.3	19.8	18.9
Feb	17.4	16.1	17.8	18.4	21.5	18.7	18.2
Mar	17.0	17.1	19.2	20.2	22.7		19.2
Apr	16.9	16.5	18.9	16.5	20.7		17.9
May	17.6	18.5	18.6	18.2	21.1		18.8
Jun	18.0	19.1	19.4	18.0	20.8		19.1
Jul	19.5	21.1	20.6	20.7	24.4		21.3
Aug	19.4	19.7	20.2	21.4	25.7		21.3
Sep	19.5	20.8	20.9	21.4	23.0		21.1
Oct	20.1	22.6	22.4	21.8	25.8		22.6
Nov	17.5	19.1	20.0	21.3	26.2		20.8
Dec	16.2	18.0	19.2	19.3	19.1		18.4
<b>2 month avg.</b>	18.0	17.6	17.6	18.2	21.4	19.2	18.6
<b>Annual Avg.</b>	18.2	19.0	19.5	19.6	22.7		19.8
<b>Total</b>	218.0	227.7	234.6	235.1	272.2		237.5

Source: USDA NASS Chickens and Eggs

% Change to date

-10.14

Note: The number of pullets to be housed was reduced by 6 million based on the number reported as lost to avian influenza. We assumed the reduction as evenly spread during the period between May and September 2015 (assuming that the ages of affected birds was evenly distributed).



PROJECTED U.S. TABLE EGG FLOCK LESS THAN 72 WEEKS OF AGE (Millions)

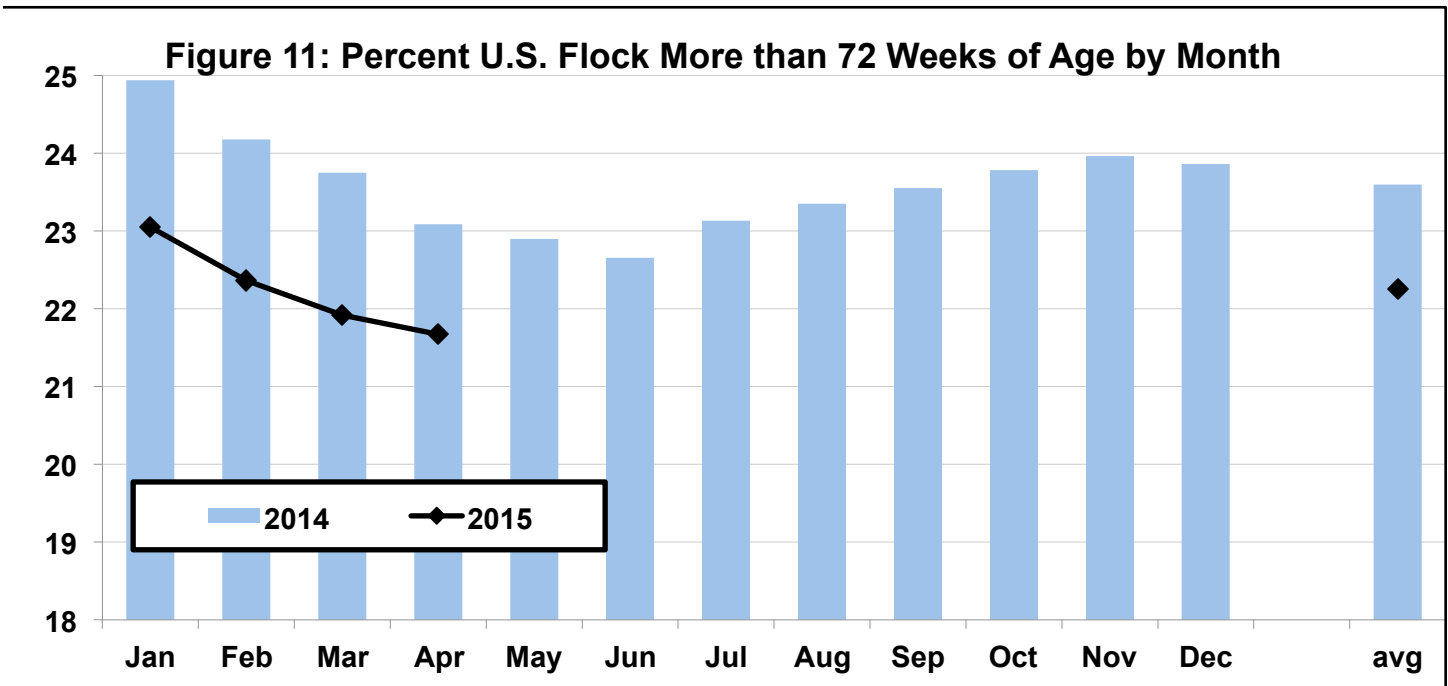
TABLE 18

month	Number				% of National Flock over 72 wks.		
	2012	2013	2014	2015	2013	2014	2015
Jan	219.7	220.1	227.7	235.8	26.3	24.9	23.1
Feb	219.6	219.4	229.5	236.5	26.8	24.2	22.4
Mar	217.9	219.6	231.6	237.4	26.9	23.7	21.9
Apr	217.3	219.1	234.0	235.0	26.5	23.1	21.7
May	217.9	220.0	234.1	*	25.8	22.9	
Jun	218.2	221.1	234.4	*	25.5	22.7	
Jul	219.6	221.9	233.8	*	25.4	23.1	
Aug	219.4	222.1	234.1	*	25.8	23.4	
Sep	219.5	223.4	234.0	*	25.6	23.6	
Oct	220.2	226.0	233.5	*	25.0	23.8	
Nov	220.2	227.5	234.3	*	25.3	24.0	
Dec	219.7	229.3	235.4	*	24.9	23.9	
<b>4 month avg.</b>	218.6	221.8	232.8	237.8			
<b>4 month avg.</b>					26.6	24.0	22.3
<b>12 month avg.</b>	219.1	222.5	233.0		25.8	23.6	

Source: Egg Industry Center based on USDA NASS Chickens and Eggs data

Note: The number of layers younger than 72 weeks of age are estimated as the sum of the Egg-Type Chicks Hatched between 5 and 17 months before adjusted by a 9% loss

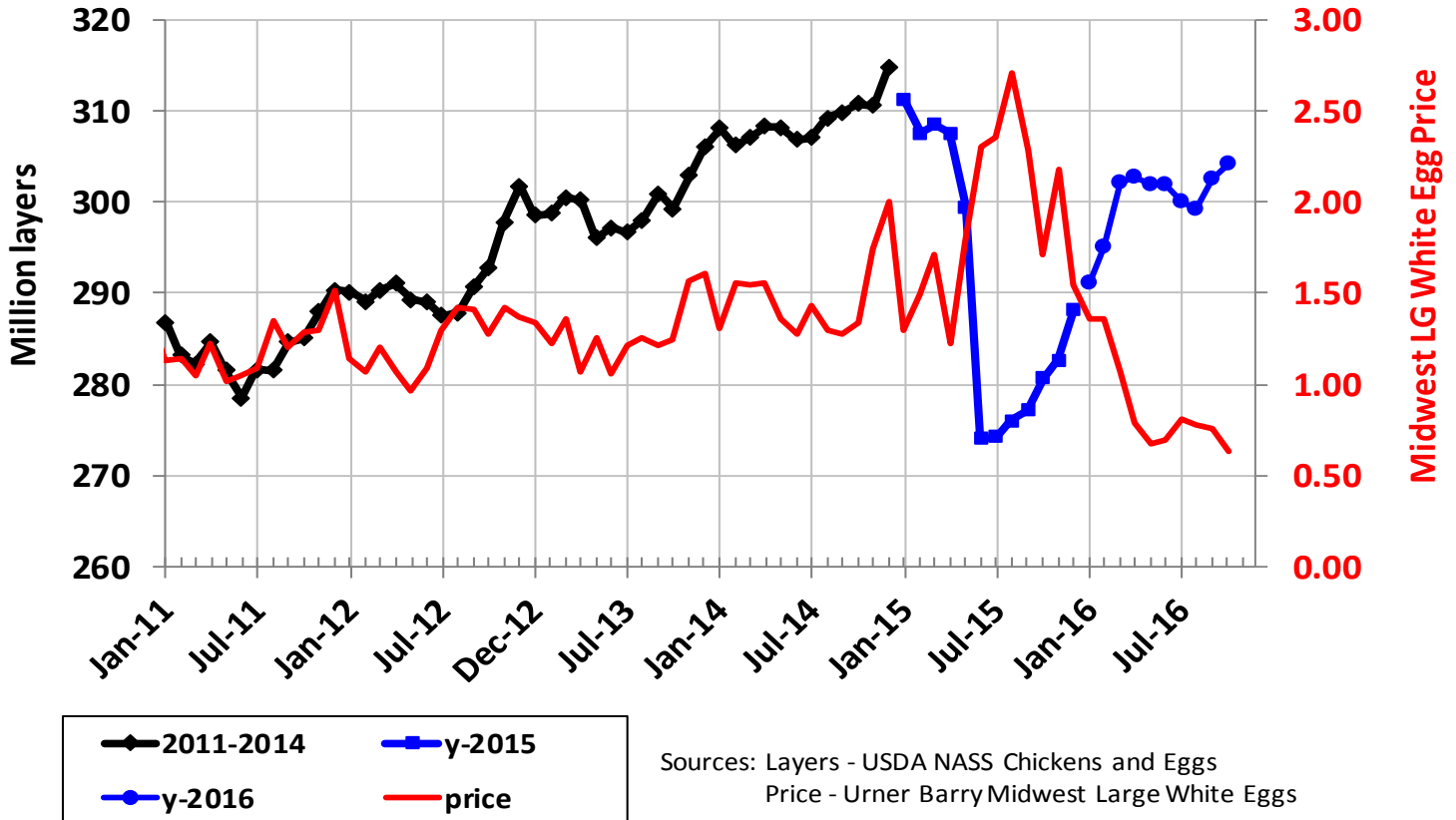
\* Special note: A special adjustment to this calculation will be needed as a result of the avian influenza outbreak, but it will depend on some assumptions about the ages of the layers affected.



### Some new uncertainties about the flock projection

The egg prices continue very low and the flock size hadn't changed much despite the large number of baby chicks hatched during the 1st half of 2016. Under normal circumstances the large number of chicks hatch would result in an increase on the number of layers 5 months later, but these low prices discourage the producers from keeping some of the older (less efficient) flocks.

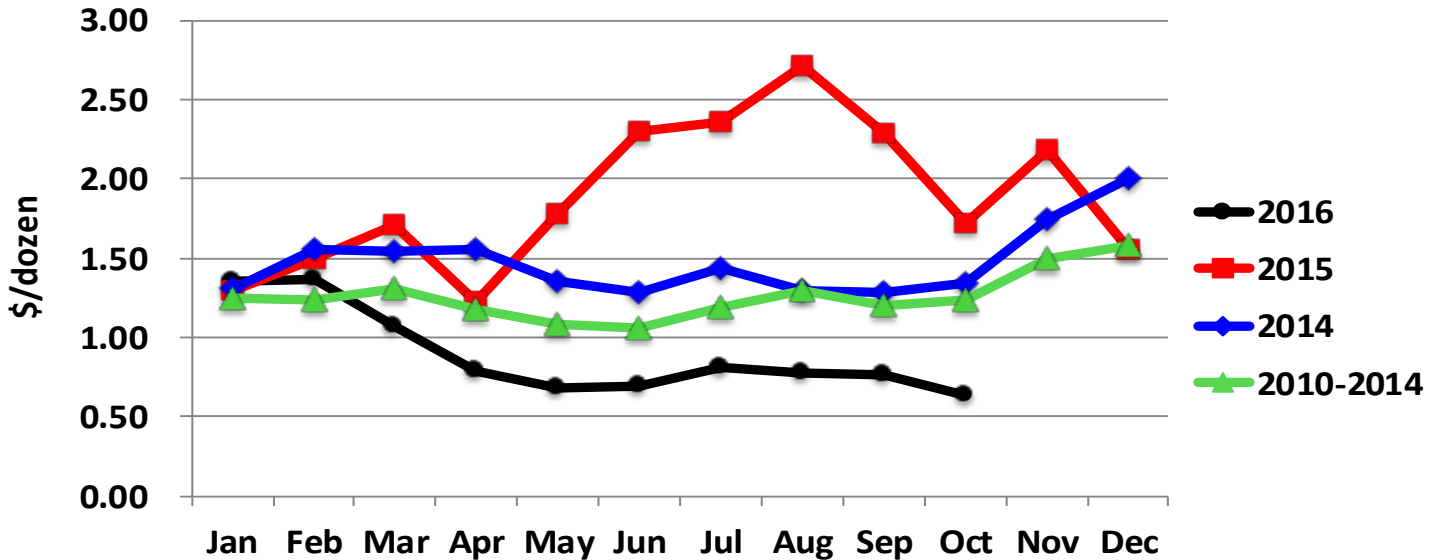
**U.S. Table-Egg Layers on 1st of the Month and Egg Prices (2011-2016)**



It is shown in the figure above that the U.S. flock was recuperating at a very good rate from the losses experienced last year even though the prices were going down, as more supply was available. But the growth stopped in April, which coincided with the month the prices reached levels close to the 10-year low prices as shown in the figure below.



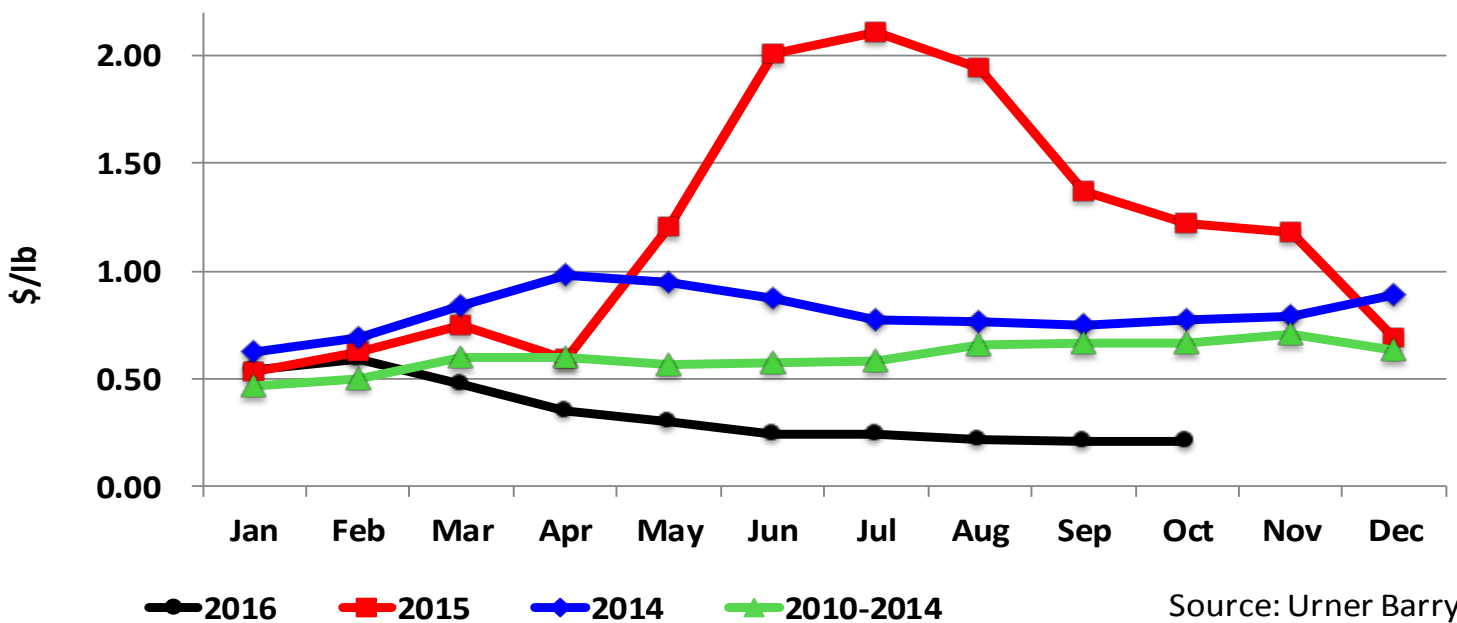
### Midwest Large White Egg Prices



Source: Urner Barry

The egg products industry is also facing low prices. The whole liquid egg price is at the lowest level since 1983, when Urner Barry started publishing them (see figure below). The September price was 5.9 times lower than last year and 3.7 times lower than in 2014, to compare with a period of time before the HPAI outbreak.

### Liquid Whole Egg Price, Unpausterized, Standard



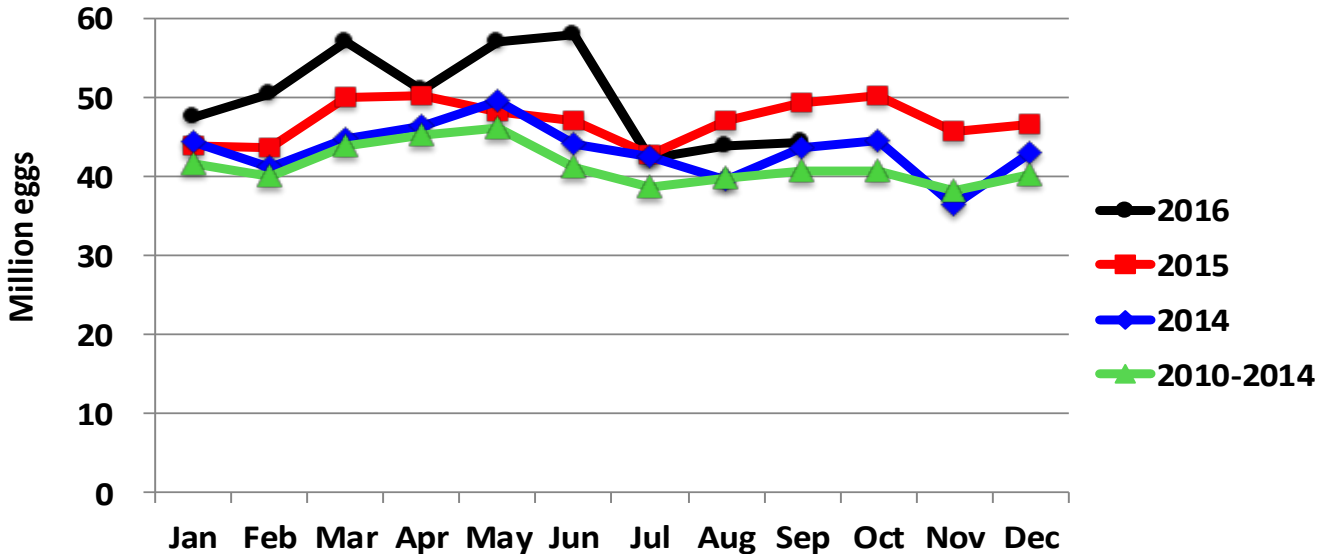
Source: Urner Barry





The flock didn't increase very much during the last few months despite of the large egg-type eggs hatched from January through June 2016 (see figure below). The number of chicks hatched from July through September decreased to levels similar to 2014.

### Egg Type Straight Run Hatch



Source: USDA NASS

The number of eggs consumed per person per day in the U.S. in September was 1.4% lower than the same month of 2014, before the HPAI outbreak (see figure below). The U.S. egg exports had been lower than in 2014 from January through September. The September exports were 21% lower than in 2014 and the September imports were lower than in 2014. But there is still a large inventory of eggs.

### Eggs consumed per person per day in the U.S.

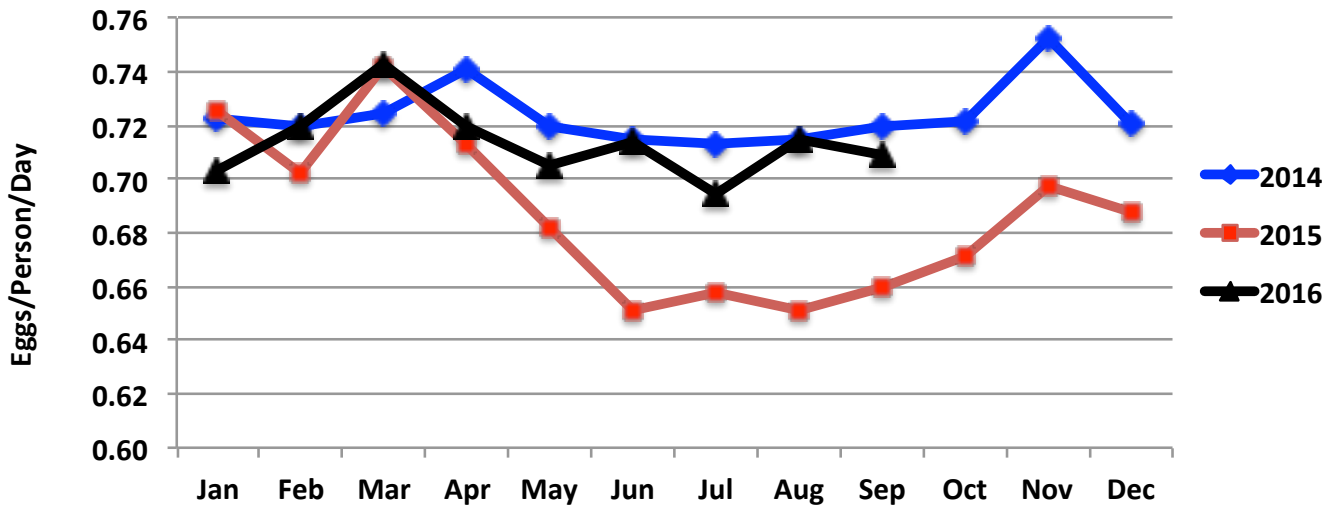


Figure 12: U.S. Monthly Table-Egg Layers (2006-2016)

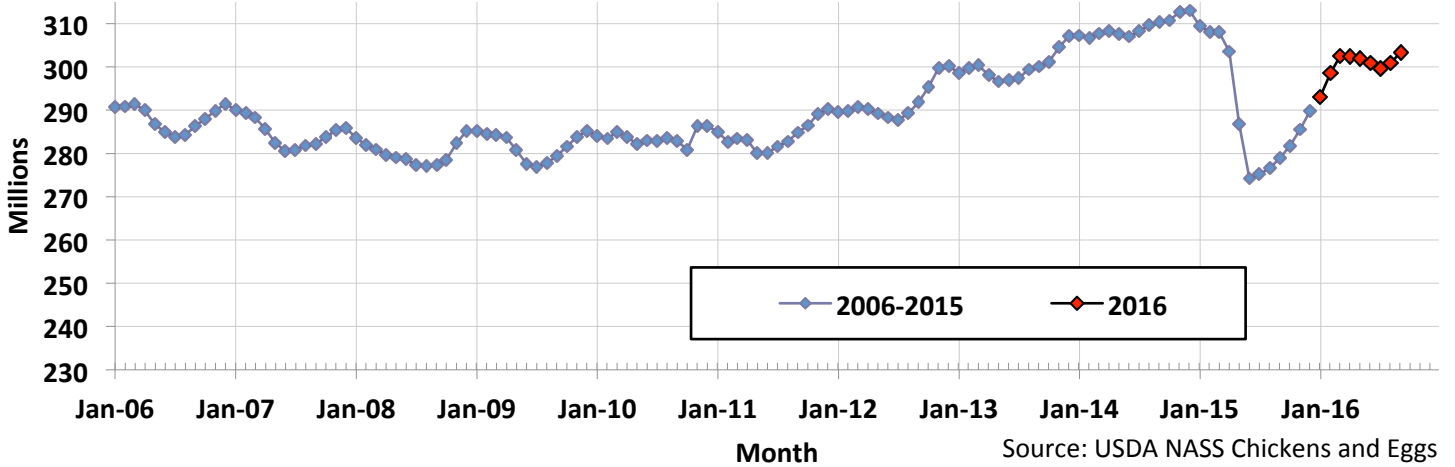


Figure 13: U.S. Table Eggs per Hundred Hens per Day by Month (2006-2016)

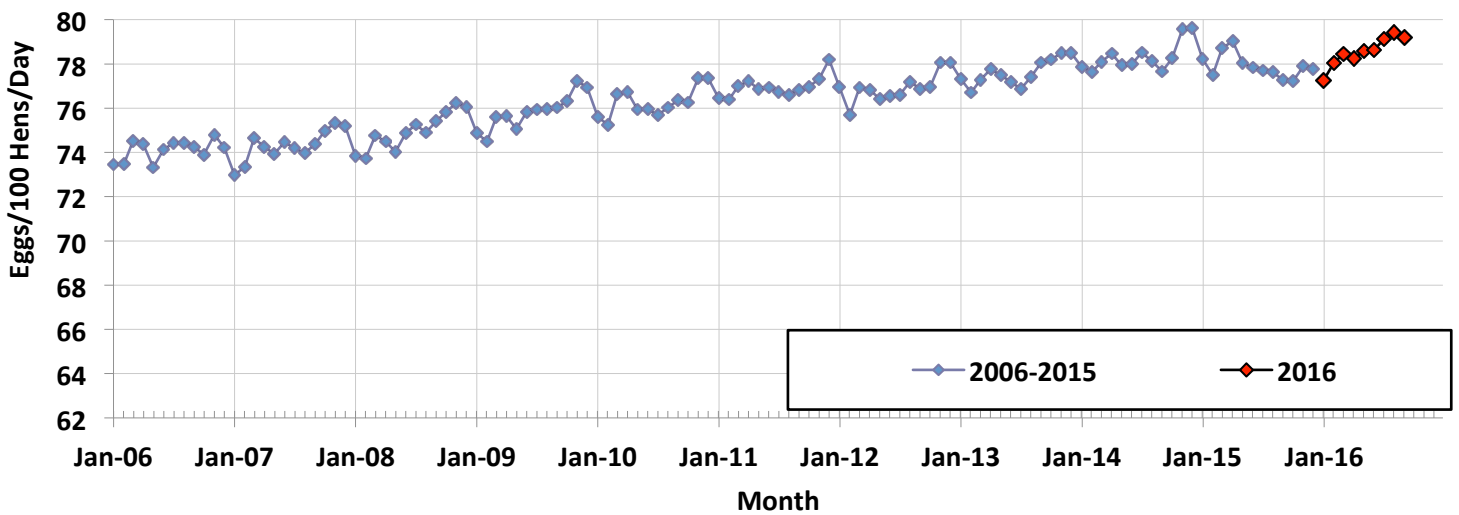


Figure 14: Monthly Percent of U.S. Flock Molted (2006-2016)

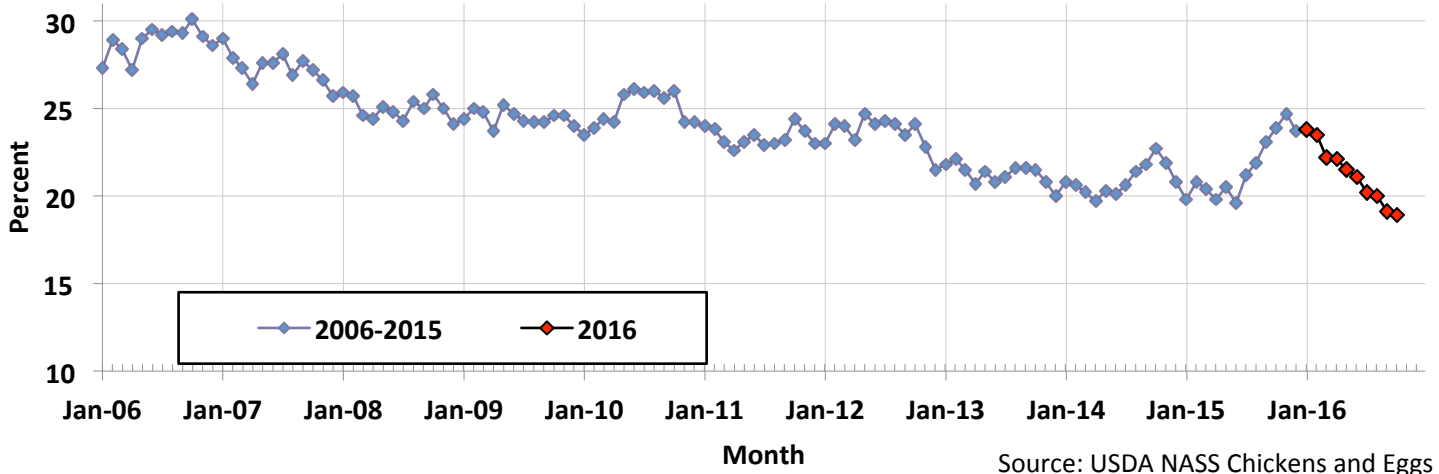
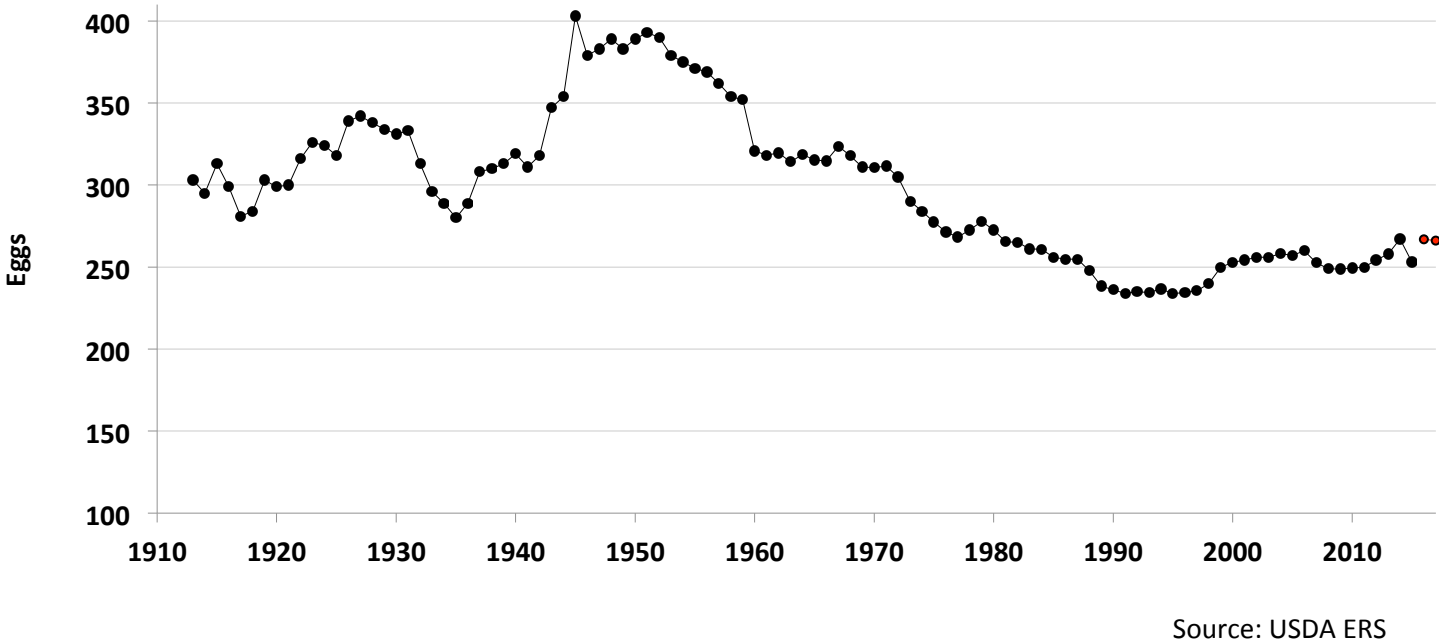


Figure 15: U.S. Per Capita Egg Consumption by Year (1913-2017)



**SUMMARY TO DATE**

**Table 23**

		2015	2016	% Change
HATCH of EGG-TYPE STRAIGHT RUN (THOUSANDS) (U.S.) (Total)	Jan to Sep	422,861	451,972	6.9
TABLE-EGG LAYERS (MILLIONS) (U.S.) (Avg.)	Jan to Sep	291.2	300.4	3.2
TABLE EGGS (MILLIONS/MONTH) (U.S.) (Avg.)	Jan to Sep	6,888	7,183	4.3
RATE OF LAY (%) (Avg.)	Jan to Sep	78.0	78.5	0.6
U.S. TABLE EGG AVG. CASES/WEEK (THOUSANDS)	Jan to Sep	1,589	1,658	4.3
AVG MONTHLY CASES OF EGGS BROKEN (MILLION) (U.S.)	Jan to Sep	5.914	6.307	6.6
		<b>2013</b>	<b>2014</b>	<b>Difference</b>
PERCENT OF U.S. FLOCK IN or POST MOLT (Avg.)	Jan to Oct	21.1	21.2	0.1
AVVERAGE PULLETS ADDED/MONTH (MILLIONS) (U.S.)	Jan to Feb-2017	21.4	19.2	-2.2

Note: U.S. cost of production and egg prices are published in another Egg Industry Center report. Contact Maro Ibarburu at maro@iastate.edu to be placed on the mailing list to receive monthly copies of these reports.

**Webpages of some of the sources of information,**

**Access these sites by clicking on the blue addresses below:**

- University of California Poultry Page <http://animalscience.ucdavis.edu/avian/>
- USDA NASS Chickens and Eggs <http://usda.mannlib.cornell.edu/MannUsda/viewDocumentInfo.do?documentID=1028>
- USDA NASS Poultry Slaughter <http://usda.mannlib.cornell.edu/MannUsda/viewDocumentInfo.do?documentID=1131>
- USDA NASS Egg Products <http://usda.mannlib.cornell.edu/MannUsda/viewDocumentInfo.do?documentID=1057>
- USDA ERS Livestock and Meat Trade Data. <http://www.ers.usda.gov/data/MeatTrade/BroilerTurkeyMonthly.htm>
- USDA FAS <http://www.fas.usda.gov/gats/ExpressQuery1.aspx>
- USDA NASS Cold Storage <http://usda.mannlib.cornell.edu/MannUsda/viewDocumentInfo.do?documentID=1034>
- USDA AMS Poultry Market News and Analysis <http://marketnews.usda.gov/portal/py>

Maro Ibarburu, EIC Business Analyst  
 Iowa State University, Ames, IA  
 Phone (515) 294-8132  
 E-mail: [maro@iastate.edu](mailto:maro@iastate.edu)

